An aerial photograph of Helsinki, Finland, with a reddish-brown color cast. The city's dense urban landscape, including numerous buildings and a prominent church spire, is visible. The text 'HELLO DEV' is overlaid in the upper center, with 'HELLO' in blue blocks and 'DEV' in white blocks. A red heart replaces the letter 'O' in 'HELLO'. Below this, the phrase 'HELSINKI LOVES DEVELOPERS' is written in a bold, black, sans-serif font.

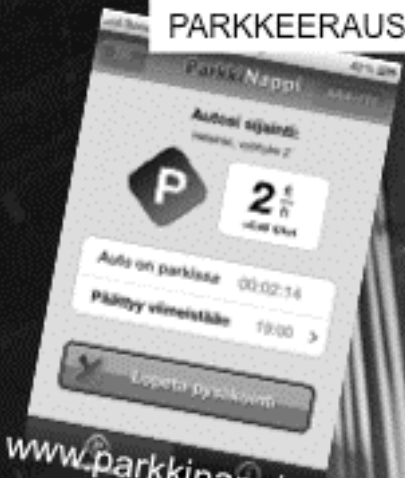
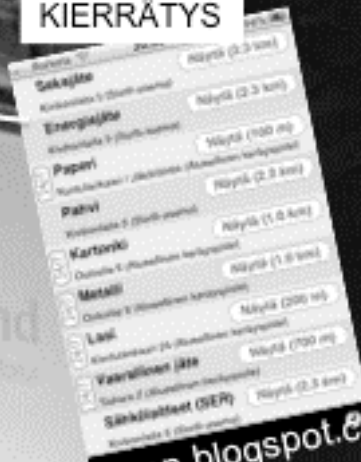
HELLO DEV
HELSINKI LOVES DEVELOPERS

What's happening in Helsinki and can I take part in it?



KIERRÄTYS

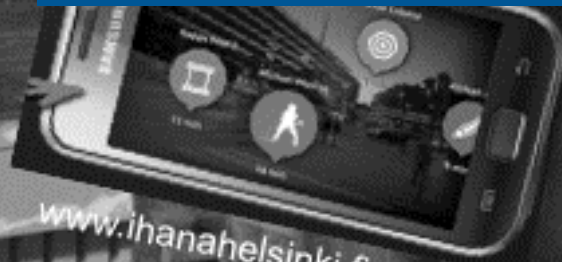
PARKKEERAUS



kierratysapp.blogspot.com

www.parkkinappi.fi

Create innovative app and win!



www.ihanahelsinki.fi

Apps4Finland.fi

KOODAA
HELSINKI
PAREMMAKSI



Helsinki
Smart City App Hack



ULTRAHACK

Etene seuraavasti

1

Keksi ratkaisu Helsinki Smart City App Hack
-haasteeseen: *“Mitä Helsingissä tapahtuu ja miten voin olla
osa sitä?”*

2

Hyödynnä Helsingin avointa dataa ja koodaa sovellus!

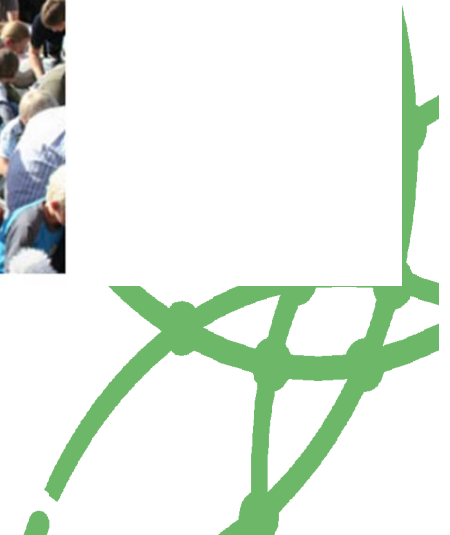
3

Ilmoittaudu kilpailuihin ja voita!

The first deadline for submissions on 18th October!

Get inspired!

5 Challenges to get you inspired!
The Smart City App Hack helps you to turn urban challenges into great opportunities!





Culture & Tourism

Enjoying the cultural offer of a city is paramount to the wellbeing of citizens and a positive travel experience of visitors. The culture and tourism theme aims to harness the potential of mobile applications to give new impulses to the culture in the City.

Your brief:

Solutions for Culture and Tourism should deal with, but are not limited to the following aspects:

- give access to the cultural agenda to all citizens and visitors in your city
- help artists and any cultural agent in their work
- connect makers of culture with their audience
- offer personalized experiences for visitors
- facilitate meaningful connections between visitors and citizens
- help manage the flow of visitors in a city



Useful data e.g.

LIBRARY DATA

AERIAL
PHOTOGRAPHS

VISITORS
IN THE ZOO

DATA ABOUT
CONCERTS

MAPS

PUBLIC
TRANSPORT

OVERNIGHTS –
PURPOSE,
CAPACITY ETC.

EVENTS

3D BUILDINGS

RESTAURANTS

Helsinki ennen

Valokuvat

Info

Kauppa

See the
changes
over time



Kalastajien veneitä Kolera-altaalla

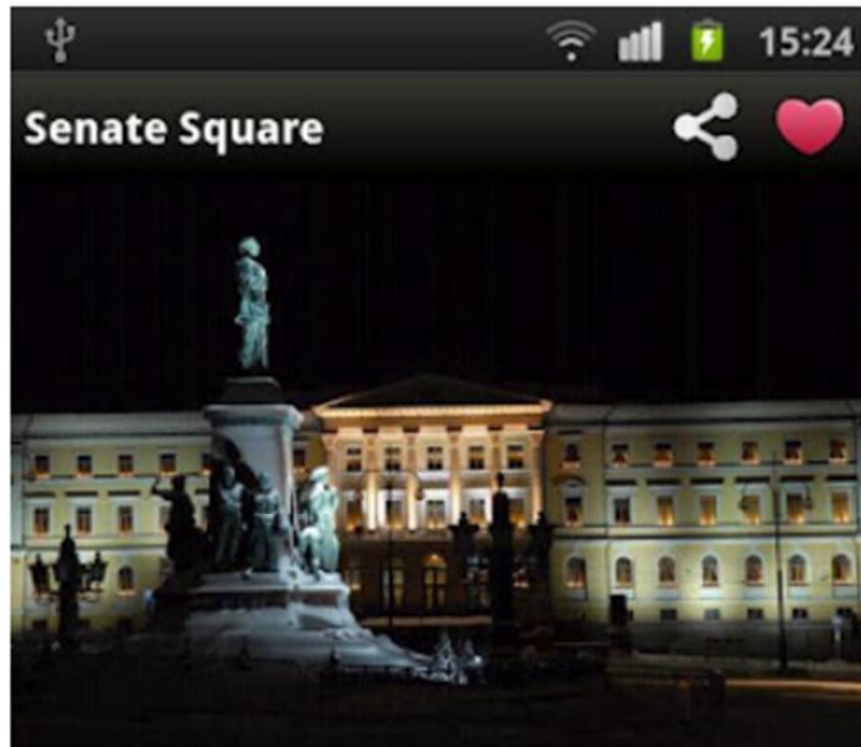
Kolera-allas (ruots. Kolerebassängen) on Helsingin Eteläsatamassa. Kauppatorin edustalla oleva satama-allas. Vuoden 1893 syksyllä Siikkamarkkinoille tullut nauvolainen laivuri Joh... [Lue lisää](#)

www.helsinkiennen.fi

Ilmakuva: Helsingin kaupungin kiinteis

1800 1900 1910 1920 **1930** 1940 1950 1960

Spot in Helsinki



© Kimmo Brandt

11.35 km



Find events easily

KATEGORIAT

Esimerkkejä muualta

AVAINSANAT

kulttuuri matkailu reittiopas tapahtumat
turismi vapaa-aika

DATA:

Pääkaupunkiseudun Palvelukartan REST-rajapinta
Helsingin kaupunki – tietoa matkailuun liittyvistä
kohteista ja tapahtumista

SOVELLUKSEN WWW-OSOITE:

<https://play.google.com/store/apps/details?id=in.spotinhki&hl=en>

TEKIJÄ:

O. Kornilova & P. Leonard

Public transport routes and information about 700+ attractions and 450 events in Helsinki and around in English, Finnish and Swedish.

It also features:

Open data presentations today

- Matkailijoiden sovellusideoita
- Helsingin kaupunginorkesterin konsertit 1882-, Tapio Piirainen
- Tapahtumarajapinta (Linked Events), Aapo Rista
- Kaupunginkirjaston datat, Jouni Juntumaa
- Teoston datat, Turo Pekari
- Avoin GLAM –verkoston datat + Hack4Fi, Laura Sillanpää
- Elintarvikehuoneistot-data, Sirpa Siilin



Matkailijoiden sovellusideoita

Esim. "Päivä Helsingissä" – mobiilisovellus
esim. risteilymatkailijoille, jotka viettävät
Helsingissä vain yhden päivän.

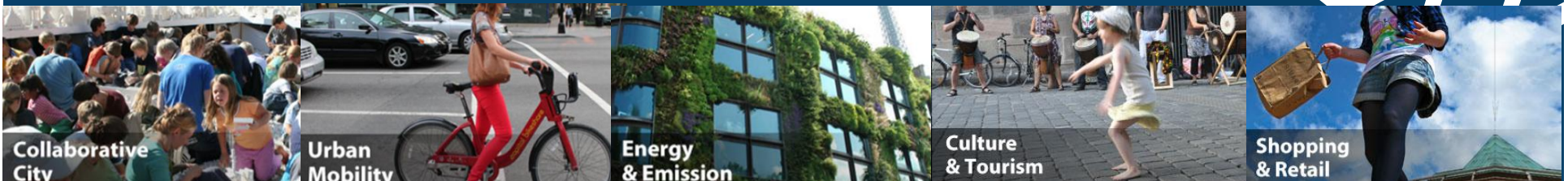
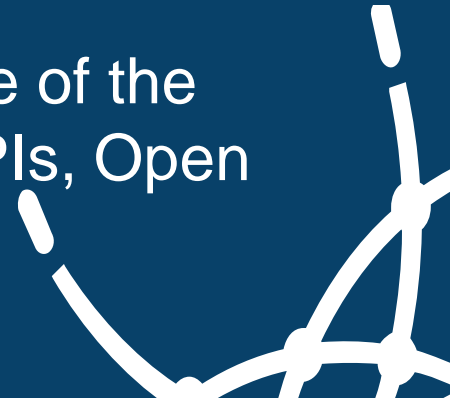
Minkälaisia tarpeita vierailta voisi olla?
Sovellus voisi hyödyntää mm. julkisen
liikenteen reitti- ja aikataulutietoja,
käyntikohteet sekä ruoka- tai
kahvipaikkasuosituksia ja muita vinkkejä ja
tietoja matkalaisille.

Lisäksi esim. kävelyreittejä ja ääniselostuksia
nähtävyyksistä sekä helppo tapa saada
matkailijat jakamaan
kokemuksiaan Helsingistä omille
ystävillään/tuttavilleen.



Evaluation criteria of Helsinki

- Addresses the problem statement(s) and solves a real user's needs
- Quality of user interface
- Technical and operational feasibility
- Economic and financial sustainability
- Creativity and innovation
- Use of the resources required to apply for one of the special prizes (FIWARE APIs, MasterCard APIs, Open Data sets etc.)



Join Open Data Competitions!

- **Smart City App Hack SCAH**

- Deadline 18.10.
- Helsinki Winner announced 26.10.
- Pitch at Barcelona Smart City Expo 17.-19.11.

Lot's of prizes!

- **SlushHacks / Ultrahacks&Junction**

- Pregaming 1.9.-1.11. – Registration <https://ultrahack.org/>
- Hackathon 6.-8.11.
- Slush 11.-12.11.

- **Open Finland Challenge OFC**

- Deadline 9.11.
- Gala 3.12.

SUBMISSIONS: <http://openfinlandchallenge.fi/osallistu/>

Next steps

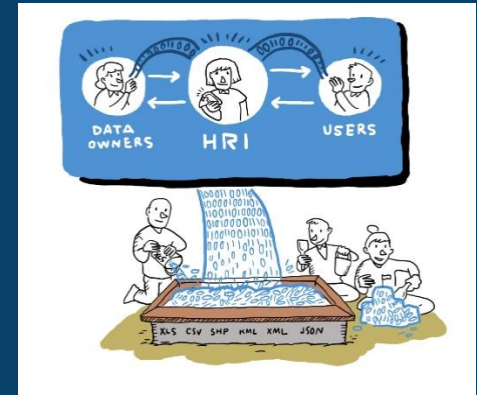
- ✓ Get familiar with the challenges
 - ✓ <http://openfinlandchallenge.fi/en/helsinki-smart-city-app-hack/>
- ✓ Find open data: www.hri.fi
- ✓ Follow us: @HRInfoshare, Fb: ../helsinkiregioninfoshare
- ✓ Meet the data experts!



Open Data Open Offices every second Thursday at 3-6 pm at Helsinki Think Company (Vuorikatu 5)

Themes:

- *3.9. Collaborative City*
 - *17.9. Culture & Tourism + Retail & Shopping*
 - *1.10. Energy and emissions*
 - *15.10. Health and wellness*
 - *29.10. Challenges generally, app presentations*
- ✓ Ask help at the "Helpdesk": hri@hel.fi



Helsinki Region Infoshare – www.hri.fi

The screenshot shows the Helsinki Region Infoshare website. At the top, there is a dark blue header with the logo and navigation links for 'Data', 'Applications', 'News', 'About Open Data', and 'About HRI'. Below the header, a white banner features the title 'Open data from the Helsinki Metropolitan Area for you to use freely'. Underneath, a row of four articles is displayed with green arrows pointing right, each with a brief description and a 'Show more articles' link. The bottom section contains a search bar with the text 'SEARCH DATA' and '1201 DATASETS', followed by three buttons: 'SUBMIT NEW DATA', 'SUBMIT DATA REQUEST', and 'USE ADVANCED DATA SEARCH'. Below this is a 'OR SEARCH BY CATEGORY' section with a grid of 12 icons and their corresponding category names and counts.

HELSENKI REGION INFOSHARE

Suomenkieli | Key points in English | Koti på svenska

Data Applications News About Open Data About HRI

This English version of the HRI service gives you the key points. For the extensive version, please see the Google translation of the Finnish version.

Open data from the Helsinki Metropolitan Area for you to use freely

Helsinki Region Infoshare
2014-2015

→ Helsinki Region Infoshare, 2 years of open public data publication

→ Harnessing the Uncovered Opportunities of Open Data

→ Seek funding for the realization of your open data ideas

→ Helsinki opens a window to its information systems

Show more articles »

SEARCH DATA Search data... 1201 DATASETS

→ SUBMIT NEW DATA → SUBMIT DATA REQUEST → USE ADVANCED DATA SEARCH

OR SEARCH BY CATEGORY

CITY PLANNING AND REAL ESTATE (67)	CONSTRUCTION (106)	CULTURE (97)	ECONOMY AND TAXATION (102)	EDUCATION AND TRAINING (105)	ENVIRONMENT AND NATURE (78)
HEALTH (85)	HOUSING (146)	INFORMATION (24)	INFORMATION TECHNOLOGY (30)	JOBS AND INDUSTRIES (172)	LAW AND LEGAL PROTECTION (35)

Show more categories »

THANK YOU!

Photo: The City of Helsinki Media Bank/Matti Tirri