

Helsinki

# Statistical Yearbook of Helsinki

2024

# Statistical Yearbook of Helsinki

# 2024

22<sup>th</sup> volume

The data in the tables and statistical figures are available in an accessible format by e-mail at kaupunkitieto.kirjasto(at)hel.fi

City of Helsinki. Executive Office. Urban Research and Statistics

|           |                                                                                                                   |
|-----------|-------------------------------------------------------------------------------------------------------------------|
| Address   | P.O. Box 550. FI-00099 City of Helsinki. Finland<br>(Työpajankatu 8)                                              |
| Telephone | +358 9 310 43297                                                                                                  |
| Inquiries | Ari Jaakola. tel. +358 9 310 43608. ari.jaakola@hel.fi<br>Solja Saarto. tel. +358 310 36378. solja.saarto.@hel.fi |
| ISBN      | 978-952-386-563-1                                                                                                 |

# Contents

- Preface ..... 4
- Explanation of symbols ..... 5
- 1. Area and environment..... 7
- 2. Population..... 10
- 3. Housing..... 21
- 4. Transport and Tourism ..... 29
- 5. Health care ..... 33
- 6. Social welfare ..... 38
- 7. Education ..... 41
- 8. Culture and leisure ..... 47
- 9. Energy and water supply..... 51
- 10. City finances and personnel ..... 54
- 11. Labour force ..... 57
- 12. Economic activities ..... 61
- 13. Income and consumption ..... 65
- 14. Justice and public safety ..... 69
- 15. Elections ..... 72

# Preface

The Helsinki Statistical Yearbook of Helsinki brings together a wide range of statistics on various themes. It presents a comprehensive picture of Helsinki, its residents and development based on reliable statistical data. In addition to the statistics on Helsinki, the yearbook offers comparative statistics regarding the Helsinki Metropolitan Area, the Helsinki Region and Finland as a whole. Furthermore, the book contains separate sections on the major city regions in Scandinavia and the capitals of the Baltic States. The various themes and their development are described in a total of 241 statistical tables.

The 2024 yearbook is the 112th annual edition. The content of the yearbook has been revised several times over the years, but its purpose has remained the same: it provides a comprehensive overview of the city and its residents, as well as urban development, based on the latest available statistics.

Statistics capture the various manifestations of societal changes occurring both rapidly and over longer periods. The statistical yearbook offers excellent opportunities to examine these changes. The current yearbook describes, among other things, how quickly Helsinki's population growth recovered from the slow growth during the corona years, and how Helsinki's growing multiculturalism is gradually reflected in the borrowing of literature in languages other than Finnish or Swedish at City of Helsinki Libraries.

The Statistical Yearbook of Helsinki can be studied online (see [kaupunkitieto.hel.fi](http://kaupunkitieto.hel.fi)). The 1905–2008 editions are available in a digital format on the City Archives database Sinetti ([www.sinettiarkisto.fi](http://www.sinettiarkisto.fi)). Furthermore, the tables of the yearbook are available as open data on the Helsinki Region Infoshare web service ([www.hri.fi](http://www.hri.fi)). The latter contains all the statistical tables published in the yearbook since 2002.

Additional information on many themes covered in the yearbook can be found in the statistical and research publications of the City of Helsinki Executive Office ([kaupunkitieto.hel.fi](http://kaupunkitieto.hel.fi)). Statistical data describing Helsinki and its sub-districts, as well as the wider Helsinki region, is also available from the open statistical databases maintained by the City of Helsinki ([stat.hel.fi](http://stat.hel.fi)). In addition to this, library of Urban Research and Statistics provides an information service related to urban research and statistics in Helsinki.

The yearbook is compiled by the Urban Research and Statistics Unit in the City Executive Office, but the statistics included in the book has been provided by many informants in the city organization and outside it. The editorial work for this year's edition was carried out by Information Service Secretary **Solja Saarto**. The layout was designed by Graphic Designer **Lotta Haglund**. I want warmly thank all our cooperation partners within and outside the city administration for their invaluable contribution to the completion of the Statistical Yearbook of Helsinki 2024.

Helsinki, November 2024

**Ari Jaakola**

*Statistics and Information Services Manager*

# Explanation of symbols

## Coefficients for monetary value

| 2022 currency rate |             | 2023 currency rate |             |
|--------------------|-------------|--------------------|-------------|
| Year               | Coefficient | Year               | Coefficient |
| 1995               | 0,2615      | 1995               | 0,2778      |
| 2000               | 0,2422      | 2000               | 0,2573      |
| 2005               | 1,3558      | 2005               | 1,4406      |
| 2010               | 1,2339      | 2010               | 1,3110      |
| 2019               | 1,0979      | 2020               | 1,1631      |
| 2020               | 1,0947      | 2021               | 1,1381      |
| 2021               | 1,0712      | 2022               | 1,0625      |
| 2022               | 1,0000      | 2023               | 1,0000      |

## Explanation of symbols

|                                                                                                       |     |
|-------------------------------------------------------------------------------------------------------|-----|
| Magnitude nil                                                                                         | –   |
| Magnitude less than half of unit employed                                                             | 0   |
| Data subject to secrecy                                                                               | ... |
| Data not available                                                                                    | ..  |
| Category not applicable                                                                               | .   |
| Preliminary data                                                                                      | *   |
| Corrected figure                                                                                      | ◆   |
| Men                                                                                                   | M   |
| Women                                                                                                 | W   |
| A horizontal line drawn across a time series shows substantial breaks in the homogeneity of a series. |     |

## Reader instructions

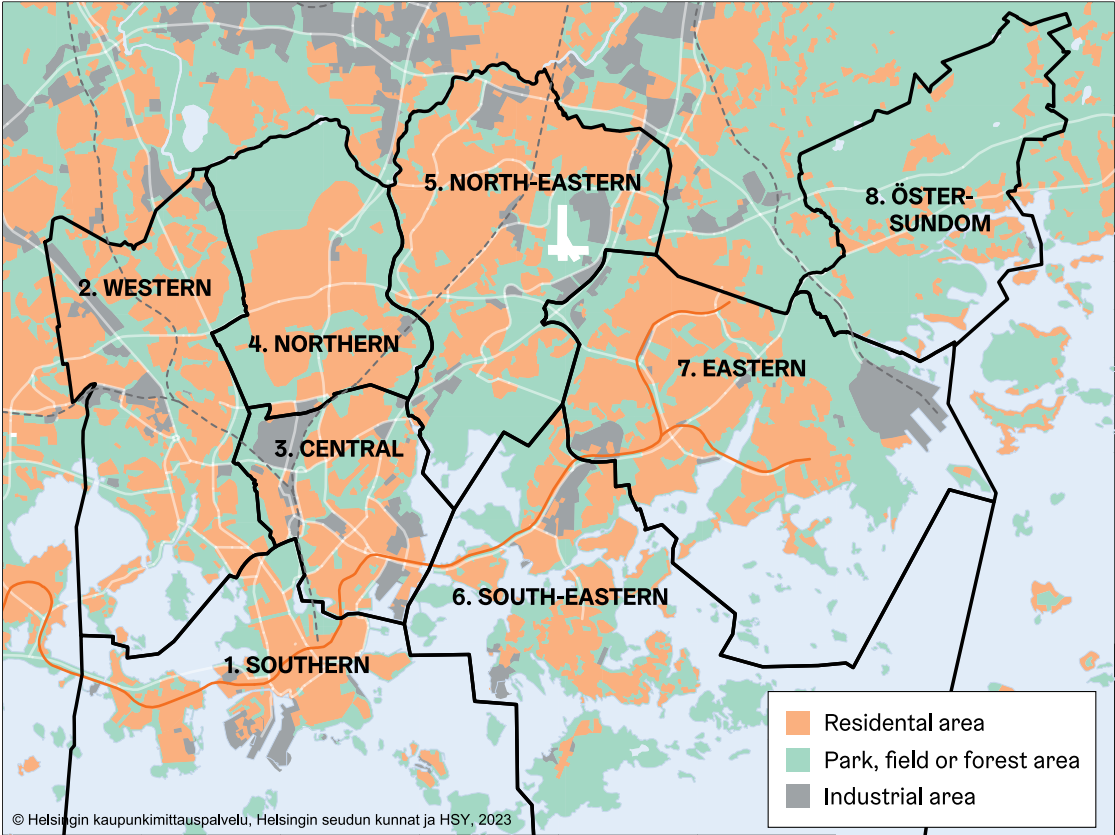
The book contains some data denominated in euros expressed in fixed monetary value for 2022 or 2023. This has been done in an attempt to eliminate the impacts of changes in monetary value on the figures. The cost of living index 1951:10 = 100 has been used as the **deflation coefficient**. The coefficients for different years are stated in conjunction with the symbols.

There is always a reference in conjunction with the euro-denominated data as to whether the figures have been stated in fixed monetary value for 2022 or 2023. Where no reference is stated, the euro-denominated data is in the current monetary value. Where figures are examined **in relation to the population figure**, the average population figure has been used as the population figure if the data apply to the whole year.

The year book presents **district data** in accordance with the **district division system** approved by the City Board. The district division system is at four levels with the city being divided into 8 major districts, which are subdivided into a total of 34 districts. These districts comprise sub-districts and small districts in the official district division. There are currently 148 sub-districts and 404 small areas. Each major district, district and sub-district has a code and name confirmed by the City Board and small areas have a code only. Major districts have a single-digit code from 1-8 and districts have a three-digit code, with the first digit designating the major district in which the district lies. The three-digit code of sub-districts is formed from the city area code (the two first digits) and the sub-district code (the last digit). A full list of the district names and codes in the district division system can be found with the district division map appendix.

**The Helsinki Metropolitan Area** comprises the cities of Helsinki, Espoo, Vantaa and Kauniainen. **The Helsinki Region** comprises these four cities and those of Hyvinkää, Järvenpää, Kerava, Kirkkonummi, Nurmijärvi, Sipoo, Tuusula, Vihti and, since 1 Jan. 2005, Mäntsälä and Pornainen.

# Major districts and land use in Helsinki 2023



# Area and environment

## List of diagrams and tables

|     |                                                                                                 |   |
|-----|-------------------------------------------------------------------------------------------------|---|
| 1.1 | Area and population density by major district 2024.....                                         | 8 |
| 1.2 | Air temperature and water-level 1995–2023.....                                                  | 8 |
| 1.3 | Respirable particles (PM <sub>10</sub> ), nitrogen dioxide and ozone in the air 2005–2023 ..... | 9 |
| 1.4 | Green house gas emissions corresponding to consumption in Helsinki 1990–2023 .....              | 9 |



## 1.1

## Area and population density by major district 2024

| Major District                      | Area, km <sup>2</sup> |                            | Inhabitants<br>per km <sup>2</sup> land |
|-------------------------------------|-----------------------|----------------------------|-----------------------------------------|
|                                     | Total                 | of which land <sup>1</sup> |                                         |
| 1. Southern                         | 152.7                 | 18.1                       | 6,827                                   |
| 2. Western                          | 36.5                  | 30.5                       | 3,733                                   |
| 3. Central                          | 17.7                  | 15.8                       | 6,588                                   |
| 4. Northern                         | 23.2                  | 23.2                       | 1,900                                   |
| 5. North-Eastern                    | 37.6                  | 36.4                       | 2,782                                   |
| 6. South-Eastern                    | 362.4                 | 25.2                       | 2,314                                   |
| 7. Eastern                          | 56.5                  | 37.5                       | 3,051                                   |
| 8. Östersundom                      | 28.7                  | 26.2                       | 67                                      |
| Islands not included in these areas | 3.6                   | 3.6                        |                                         |
| <b>The whole city</b>               | <b>719.0</b>          | <b>216.5</b>               | <b>3,115</b>                            |
| Espoo                               | 528.0                 | 330.3                      | 951                                     |
| Vantaa                              | 240.4                 | 240.4                      | 1,029                                   |
| Kauniainen                          | 6.0                   | 6.0                        | 1,712                                   |
| Helsinki Region                     | 5,518.9               | 3,841.5                    | 412                                     |

<sup>1</sup> Incl. lakes and streams.

Source: Helsinki Municipal Data System, City of Helsinki, Urban Environment Division and National Land Survey of Finland (NLS).

## 1.2

## Air temperature and water-level 1995–2023

|             | Air temperature (°C) <sup>1</sup> |             |              | Water-level (cm) <sup>2</sup> |           |            |
|-------------|-----------------------------------|-------------|--------------|-------------------------------|-----------|------------|
|             | Mean                              | Max.        | Min.         | Mean                          | Max.      | Min.       |
| 1995        | 6.2                               | 27.7        | -24.4        | 8                             | 94        | -56        |
| 2000        | 7.2                               | 26.3        | -18.0        | 6                             | 85        | -51        |
| 2005        | 6.6                               | 29.6        | -18.3        | 4                             | 151       | -44        |
| 2010        | 5.0                               | 30.1        | -22.6        | -10                           | 64        | -93        |
| 2015        | 7.8                               | 26.9        | -14.0        | 10                            | 114       | -45        |
| 2020        | 8.7                               | 28.0        | -8.2         | 13                            | 104       | -20        |
| <b>2023</b> | <b>5.5</b>                        | <b>28.5</b> | <b>-14.2</b> | <b>4</b>                      | <b>46</b> | <b>-33</b> |
| I           | -0.8                              | 5.5         | -10.9        | 23                            | 49        | -25        |
| II          | -1.3                              | 7.3         | -13.0        | 19                            | 57        | -90        |
| III         | -0.4                              | 7.0         | -12.2        | 9                             | 43        | -16        |
| IV          | 5.9                               | 16.7        | -5.0         | -26                           | 4         | -54        |
| V           | 10.9                              | 21.9        | -0.5         | -20                           | 10        | -42        |
| VI          | 17.0                              | 28.5        | 4.8          | -18                           | 1         | -35        |
| VII         | 16.9                              | 23.7        | 9.5          | 12                            | 47        | -10        |
| VIII        | 17.7                              | 28.1        | 11.5         | 15                            | 52        | -13        |
| IX          | 15.8                              | 20.9        | 5.4          | 3                             | 56        | -18        |
| X           | 5.6                               | 15.4        | -2.0         | 21                            | 105       | -23        |
| XI          | 0.8                               | 9.5         | -12.9        | 4                             | 66        | -34        |
| XII         | -3.3                              | 5.3         | -14.2        | 5                             | 56        | -37        |

<sup>1</sup> At Kaisaniemi monitoring station.

<sup>2</sup> At surface by a quay in the Kaivopuisto district.  
The measure is the theoretical average water level.

Source: Finnish Meteorological Institute.

# 1.3

## Respirable particles (PM<sub>10</sub>), nitrogen dioxide and ozone in the air 2005–2023

| Air quality                                          | Annual mean, µg/m <sup>3</sup> |      |      |      |      |
|------------------------------------------------------|--------------------------------|------|------|------|------|
|                                                      | 2005                           | 2010 | 2015 | 2020 | 2023 |
| <b>Respirable particles content, PM<sub>10</sub></b> |                                |      |      |      |      |
| Mannerheimintie 5 <sup>1</sup>                       | 30                             | 25   | 20   | 16   | 18   |
| Kallio                                               | 15                             | 15   | 12   | 9    | 9    |
| Leppävaara <sup>2</sup> (in Espoo)                   | 23                             | 15   | 20   | 14   | 14   |
| Tikkurila (In Vantaa)                                | 23                             | 16   | 12   | 12   | 13   |
| <b>Nitrogen dioxide content, NO<sub>2</sub></b>      |                                |      |      |      |      |
| Mannerheimintie 5 <sup>1</sup>                       | 43                             | 41   | 32   | 16   | 17   |
| Kallio                                               | 22                             | 23   | 18   | 10   | 11   |
| Leppävaara <sup>2</sup> (in Espoo)                   | 24                             | 28   | 23   | 14   | 14   |
| Tikkurila (In Vantaa)                                | 30                             | 30   | 21   | 14   | 14   |
| <b>Ozone content, O<sub>3</sub></b>                  |                                |      |      |      |      |
| Mannerheimintie 5 <sup>1</sup>                       | 37                             | 39   | 41   | ..   | ..   |
| Kallio                                               | 48                             | 48   | 50   | 51   | 54   |
| Tikkurila                                            | 46                             | 44   | ..   | ..   | ..   |

<sup>1</sup> Measuring started in 2005.

<sup>2</sup> Location of monitoring station changed in January 2005 and 2010.

Source: HSY Helsinki Region Environmental Services Authority: Ilmanlaatu pääkaupunkiseudulla.

# 1.4

## Green house gas emissions corresponding to consumption in Helsinki 1990–2023

Total emissions, 1,000 t CO<sub>2</sub> equiv.

|                                 | 1990  | 2000  | 2010  | 2015  | 2020  | 2023  | 1990–2023 change% |
|---------------------------------|-------|-------|-------|-------|-------|-------|-------------------|
| <b>Total</b>                    | 3,514 | 3,120 | 3,249 | 2,602 | 2,344 | 1,947 | -45               |
| District heating                | 1,662 | 1,205 | 1,362 | 1,215 | 1,236 | 1,025 | -38               |
| Electrical heating              | 114   | 105   | 90    | 79    | 72    | 61    | -46               |
| Individual property heating     | 78    | 96    | 111   | 73    | 52    | 37    | -53               |
| Consumer electricity            | 516   | 686   | 838   | 481   | 314   | 225   | -56               |
| Transportation                  | 686   | 710   | 719   | 624   | 577   | 528   | -23               |
| Industry and work machinery     | 168   | 97    | 26    | 20    | 33    | 14    | -91               |
| Waste and waste water treatment | 288   | 221   | 100   | 110   | 60    | 56    | -80               |
| Agriculture                     | 2     | 1     | 1     | 1     | 1     | 1     | -54               |

Emissions per capita, tons of CO<sub>2</sub> equiv./inhabitant

|                                 | 1990 | 2000 | 2010 | 2015 | 2020 | 2023 | 1990–2023 change% |
|---------------------------------|------|------|------|------|------|------|-------------------|
| <b>Total</b>                    | 7.1  | 5.6  | 5.5  | 4.1  | 3.6  | 2.9  | -59               |
| District heating                | 3.4  | 2.2  | 2.3  | 1.9  | 1.9  | 1.5  | -54               |
| Electrical heating              | 0.2  | 0.2  | 0.2  | 0.1  | 0.1  | 0.1  | -60               |
| Individual property heating     | 0.2  | 0.2  | 0.2  | 0.1  | 0.1  | 0.1  | -65               |
| Consumer electricity            | 1.0  | 1.2  | 1.4  | 0.8  | 0.5  | 0.3  | -68               |
| Transportation                  | 1.4  | 1.3  | 1.2  | 1.0  | 0.9  | 0.8  | -43               |
| Industry and work machinery     | 0.3  | 0.2  | 0.0  | 0.0  | 0.1  | 0.0  | -94               |
| Waste and waste water treatment | 0.6  | 0.4  | 0.2  | 0.2  | 0.1  | 0.1  | -85               |
| Agriculture                     | 0.0  | 0.0  | 0.0  | 0.0  | 0.0  | 0.0  | ..                |

Source: City of Helsinki. Urban Environment Division.

## List of diagrams and tables

|                                                                                              |           |
|----------------------------------------------------------------------------------------------|-----------|
| <b>Population by mother tongue and age 31.12.2023</b> .....                                  | <b>20</b> |
| <b>2.1 Helsinki's population 1875–2023</b> .....                                             | <b>11</b> |
| <b>2.2 Population by age and sex on 31 Dec 2000–2023</b> .....                               | <b>12</b> |
| <b>2.3 Population on 31 Dec 2000–2023 and a projection for 31 Dec 2038 by district</b> ..... | <b>13</b> |
| <b>2.4 Population by citizenship on 31 Dec 2005–2023</b> .....                               | <b>14</b> |
| <b>2.5 Persons having received a Finnish citizenship by mother tongue 2010–2022</b> .....    | <b>15</b> |
| <b>2.6 Population by religious affiliation on 31 Dec 2000–2023</b> .....                     | <b>15</b> |
| <b>2.7 Families in Helsinki by type and age of children 1990–2023</b> .....                  | <b>16</b> |
| <b>2.8 Population changes by district 2023</b> .....                                         | <b>17</b> |
| <b>2.9 Births in Helsinki in 1901–2023</b> .....                                             | <b>18</b> |
| <b>2.10 Deaths in Helsinki in 1901–2023</b> .....                                            | <b>19</b> |
| <b>2.11 Life expectancy (average expectation of remaining lifetime) 1991–2023</b> .....      | <b>19</b> |
| <b>2.12 Direction of migration 1986–2023</b> .....                                           | <b>20</b> |

| Year          | Total   | Change <sup>2</sup><br>Number | %    | Men     | Women   | Women per<br>1,000 men |
|---------------|---------|-------------------------------|------|---------|---------|------------------------|
| <i>1 Jan</i>  |         |                               |      |         |         |                        |
| 1875          | 23,070  | 1,313                         | 6.0  | 10,236  | 12,834  | 1,254                  |
| 1880          | 36,346  | 13,276                        | 57.5 | 16,403  | 19,943  | 1,216                  |
| 1885          | 41,579  | 5,233                         | 14.4 | 18,746  | 22,833  | 1,218                  |
| 1890          | 56,236  | 14,657                        | 35.3 | 25,519  | 30,717  | 1,204                  |
| 1895          | 64,554  | 8,318                         | 14.8 | 28,213  | 36,341  | 1,288                  |
| 1900          | 79,126  | 14,572                        | 22.6 | 35,010  | 44,116  | 1,260                  |
| 1905          | 93,626  | 14,500                        | 18.3 | 41,198  | 52,428  | 1,273                  |
| 1910          | 118,736 | 25,110                        | 26.8 | 52,179  | 66,557  | 1,276                  |
| 1915          | 153,467 | 34,731                        | 29.3 | 69,102  | 84,365  | 1,221                  |
| 1920          | 152,200 | -1,267                        | -0.8 | 64,434  | 87,766  | 1,362                  |
| 1925          | 162,070 | 9,870                         | 6.5  | 67,545  | 94,525  | 1,399                  |
| 1930          | 205,833 | 43,763                        | 27.0 | 87,022  | 118,811 | 1,365                  |
| 1935          | 225,482 | 19,649                        | 9.5  | 94,146  | 131,336 | 1,395                  |
| 1940          | 252,484 | 27,002                        | 12.0 | 105,777 | 146,707 | 1,387                  |
| 1945          | 276,277 | 23,793                        | 9.4  | 113,710 | 162,567 | 1,430                  |
| 1950          | 368,519 | 92,242                        | 33.4 | 157,080 | 211,439 | 1,346                  |
| 1955          | 403,970 | 35,451                        | 9.6  | 174,553 | 229,417 | 1,314                  |
| 1960          | 448,315 | 44,345                        | 11.0 | 196,689 | 251,626 | 1,279                  |
| 1965          | 494,796 | 7,374                         | 1.5  | 219,975 | 274,821 | 1,249                  |
| 1970          | 523,677 | -1,951                        | -0.4 | 233,373 | 290,304 | 1,244                  |
| 1975          | 502,961 | -7,244                        | -1.4 | 223,252 | 279,709 | 1,253                  |
| 1980          | 483,675 | -1,728                        | -0.4 | 215,061 | 268,614 | 1,249                  |
| 1985          | 484,122 | -269                          | -0.1 | 216,411 | 267,711 | 1,237                  |
| <i>31 Dec</i> |         |                               |      |         |         |                        |
| 1990          | 492,400 | 1,771                         | 0.4  | 222,566 | 269,834 | 1,212                  |
| 1995          | 525,031 | 9,266                         | 1.8  | 240,638 | 284,393 | 1,182                  |
| 1996          | 532,053 | 7,022                         | 1.3  | 244,621 | 287,432 | 1,175                  |
| 1997          | 539,363 | 7,310                         | 1.4  | 248,395 | 290,968 | 1,171                  |
| 1998          | 546,317 | 6,954                         | 1.3  | 252,366 | 293,951 | 1,165                  |
| 1999          | 551,123 | 4,806                         | 0.9  | 254,967 | 296,156 | 1,162                  |
| 2000          | 555,474 | 4,351                         | 0.8  | 257,399 | 298,075 | 1,158                  |
| 2001          | 559,718 | 4,244                         | 0.8  | 260,070 | 299,648 | 1,152                  |
| 2002          | 559,716 | -2                            | 0.0  | 260,236 | 299,480 | 1,151                  |
| 2003          | 559,330 | -386                          | -0.1 | 260,441 | 298,889 | 1,148                  |
| 2004          | 559,046 | -284                          | -0.1 | 260,573 | 298,473 | 1,145                  |
| 2005          | 560,905 | 1,859                         | 0.3  | 261,627 | 299,278 | 1,144                  |
| 2006          | 564,521 | 3,616                         | 0.6  | 263,343 | 301,178 | 1,144                  |
| 2007          | 568,531 | 4,010                         | 0.7  | 265,728 | 302,803 | 1,140                  |
| 2008          | 576,632 | 8,101                         | 1.4  | 270,176 | 306,456 | 1,134                  |
| 2009          | 583,350 | 6,718                         | 1.2  | 273,577 | 309,773 | 1,132                  |
| 2010          | 588,549 | 5,199                         | 0.9  | 276,361 | 312,188 | 1,130                  |
| 2011          | 595,384 | 6,835                         | 1.2  | 280,064 | 315,320 | 1,126                  |
| 2012          | 603,968 | 8,584                         | 1.4  | 284,562 | 319,406 | 1,122                  |
| 2013          | 612,664 | 8,696                         | 1.4  | 288,957 | 323,707 | 1,120                  |
| 2014          | 620,715 | 8,051                         | 1.3  | 293,113 | 327,602 | 1,118                  |
| 2015          | 628,208 | 7,493                         | 1.2  | 297,151 | 331,057 | 1,114                  |
| 2016          | 635,181 | 6,973                         | 1.1  | 301,010 | 334,171 | 1,110                  |
| 2017          | 643,272 | 8,091                         | 1.3  | 305,237 | 338,035 | 1,107                  |
| 2018          | 648,042 | 4,770                         | 0.7  | 307,633 | 340,409 | 1,107                  |
| 2019          | 653,835 | 5,793                         | 0.9  | 310,702 | 343,133 | 1,104                  |
| 2020          | 656,920 | 3,085                         | 0.5  | 312,196 | 344,724 | 1,104                  |
| 2021          | 658,457 | 1,537                         | 0.2  | 313,429 | 345,028 | 1,101                  |
| 2022          | 664,028 | 5,571                         | 0.8  | 316,540 | 347,488 | 1,098                  |
| 2023          | 674,500 | 10,472                        | 1.6  | 322,067 | 352,433 | 1,094                  |

<sup>1</sup> Figures include foreign nationals from 1951 on (and for the year 1915, when Russian subjects were included).

<sup>2</sup> Up until 1960 the change over the previous 5 years, after 1960 the change during the previous year.

Source: Census lists 1875–1989 and since 1990 Population Register Centre.

|                          | 2000           | 2005           | 2010           | 2015           | 2020           | 2023           |
|--------------------------|----------------|----------------|----------------|----------------|----------------|----------------|
| <b>Total population</b>  |                |                |                |                |                |                |
| <b>Total</b>             | <b>555,474</b> | <b>560,905</b> | <b>588,549</b> | <b>628,208</b> | <b>656,920</b> | <b>674,500</b> |
| 0–6 year olds            | 40,306         | 36,884         | 40,064         | 45,379         | 44,722         | 42,912         |
| 7–15                     | 48,501         | 48,746         | 45,158         | 47,675         | 54,887         | 58,531         |
| 16–17                    | 15,880         | 16,553         | 17,852         | 16,085         | 16,665         | 18,432         |
| 18–29                    | 100,626        | 103,228        | 110,221        | 115,287        | 109,843        | 108,060        |
| 30–44                    | 135,490        | 129,166        | 132,024        | 146,508        | 163,810        | 171,089        |
| 45–64                    | 140,105        | 148,466        | 155,164        | 153,210        | 152,687        | 156,837        |
| 65–74                    | 39,447         | 40,519         | 48,163         | 60,865         | 63,660         | 60,762         |
| 75–84                    | 25,651         | 27,297         | 28,376         | 30,250         | 36,523         | 43,254         |
| 85–89                    | 6,399          | 6,556          | 7,519          | 8,357          | 8,688          | 9,120          |
| 90–94                    | 2,569          | 2,781          | 3,134          | 3,561          | 4,246          | 4,260          |
| 95–                      | 500            | 709            | 874            | 1,031          | 1,189          | 1,243          |
| <b>Total %</b>           | <b>100</b>     | <b>100</b>     | <b>100</b>     | <b>100</b>     | <b>100</b>     | <b>100</b>     |
| 0–6 year olds            | 7.3            | 6.6            | 6.8            | 7.2            | 6.8            | 6.4            |
| 7–15                     | 8.7            | 8.7            | 7.7            | 7.6            | 8.4            | 8.7            |
| 16–17                    | 2.9            | 3.0            | 3.0            | 2.6            | 2.5            | 2.7            |
| 18–29                    | 18.1           | 18.4           | 18.7           | 18.4           | 16.7           | 16.0           |
| 30–44                    | 24.4           | 23.0           | 22.4           | 23.3           | 24.9           | 25.4           |
| 45–64                    | 25.2           | 26.5           | 26.4           | 24.4           | 23.2           | 23.3           |
| 65–74                    | 7.1            | 7.2            | 8.2            | 9.7            | 9.7            | 9.0            |
| 75–84                    | 4.6            | 4.9            | 4.8            | 4.8            | 5.6            | 6.4            |
| 85–89                    | 1.2            | 1.2            | 1.3            | 1.3            | 1.3            | 1.4            |
| 90–94                    | 0.5            | 0.5            | 0.5            | 0.6            | 0.6            | 0.6            |
| 95–                      | 0.1            | 0.1            | 0.1            | 0.2            | 0.2            | 0.2            |
| <b>Percentage of men</b> |                |                |                |                |                |                |
| <b>Total</b>             | <b>46.3</b>    | <b>46.6</b>    | <b>47.0</b>    | <b>47.3</b>    | 47.5           | 47.7           |
| 0–6 year olds            | 50.9           | 50.6           | 50.9           | 51.4           | 51.0           | 51.3           |
| 7–15                     | 51.1           | 51.0           | 51.0           | 51.0           | 51.2           | 51.1           |
| 16–17                    | 49.7           | 50.2           | 50.1           | 49.1           | 49.7           | 49.8           |
| 18–29                    | 47.5           | 47.2           | 46.7           | 46.4           | 46.0           | 46.1           |
| 30–44                    | 49.5           | 50.2           | 50.8           | 51.1           | 50.9           | 50.5           |
| 45–64                    | 45.8           | 46.2           | 46.7           | 47.4           | 48.4           | 49.2           |
| 65–74                    | 40.3           | 41.3           | 42.1           | 42.7           | 42.7           | 43.6           |
| 75–84                    | 29.2           | 32.5           | 35.6           | 37.2           | 38.4           | 38.8           |
| 85–89                    | 20.8           | 22.4           | 25.5           | 29.1           | 32.1           | 32.1           |
| 90–94                    | 17.2           | 16.5           | 18.8           | 21.4           | 24.6           | 27.4           |
| 95–                      | 12.8           | 14.7           | 14.0           | 14.9           | 15.5           | 18.3           |

Source: Statistics Finland.

|                                        | 2000           | 2010           | 2020           | 2023           | 2038           |
|----------------------------------------|----------------|----------------|----------------|----------------|----------------|
| <b>Helsinki, total</b>                 | <b>551,123</b> | <b>583,350</b> | <b>656,920</b> | <b>674,500</b> | <b>785,123</b> |
| %                                      | 100            | 100            | 100            | 100            | 100            |
| <i>Major Districts</i>                 |                |                |                |                |                |
| <b>1. Southern Major District</b>      | <b>97,015</b>  | <b>99,683</b>  | <b>121,294</b> | <b>123,568</b> | <b>134,837</b> |
| %                                      | 17.6           | 17.1           | 18.5           | 18.3           | 17.2           |
| 101 Vironniemi district                | 11,772         | 11,671         | 12,915         | 13,096         | 11,950         |
| 102 Ullanlinna district                | 22,668         | 23,050         | 24,859         | 24,491         | 27,181         |
| 103 Kampinmalmi district               | 29,796         | 30,394         | 43,220         | 45,469         | 49,538         |
| 104 Taka-Töölö district                | 14,432         | 14,502         | 15,478         | 15,635         | 16,145         |
| 105 Lauttasaari district               | 18,347         | 20,066         | 24,822         | 24,877         | 30,022         |
| <b>2. Western Major District</b>       | <b>100,639</b> | <b>101,328</b> | <b>111,929</b> | <b>113,982</b> | <b>128,322</b> |
| %                                      | 18.3           | 17.4           | 17.0           | 16.9           | 16.3           |
| 201 Reijola district                   | 15,775         | 15,702         | 17,101         | 16,784         | 18,688         |
| 202 Munkkiniemi district               | 17,369         | 17,328         | 18,652         | 19,149         | 20,712         |
| 203 Haaga district                     | 26,468         | 25,908         | 27,714         | 27,467         | 30,371         |
| 204 Pitäjänmäki district               | 14,948         | 15,465         | 18,240         | 18,887         | 22,055         |
| 205 Kaarela district                   | 26,079         | 26,925         | 30,222         | 31,695         | 36,496         |
| <b>3. Central Major District</b>       | <b>73,252</b>  | <b>78,561</b>  | <b>96,548</b>  | <b>103,995</b> | <b>134,189</b> |
| %                                      | 13.3           | 13.5           | 14.7           | 15.4           | 17.1           |
| 301 Kallio district                    | 25,255         | 25,606         | 32,420         | 35,598         | 45,649         |
| 302 Alppiharju district                | 11,875         | 11,731         | 11,940         | 11,572         | 11,125         |
| 303 Vallila district                   | 11,091         | 12,306         | 16,851         | 16,878         | 21,489         |
| 304 Pasila district                    | 8,591          | 8,484          | 10,298         | 14,188         | 26,284         |
| 305 Vanhakaupunki district             | 16,440         | 20,434         | 25,039         | 25,759         | 29,643         |
| <b>4. Northern Major District</b>      | <b>41,250</b>  | <b>41,164</b>  | <b>43,288</b>  | <b>44,046</b>  | <b>46,834</b>  |
| %                                      | 7.5            | 7.1            | 6.6            | 6.5            | 6.0            |
| 401 Maunula district                   | 8,984          | 8,584          | 9,244          | 9,047          | 8,798          |
| 402 Länsi-Pakila district              | 6,403          | 6,587          | 7,001          | 7,165          | 6,542          |
| 403 Tuomarinkylä district              | 8,181          | 8,585          | 8,730          | 8,605          | 8,644          |
| 404 Oulunkylä district                 | 14,145         | 13,634         | 14,666         | 15,598         | 19,590         |
| 405 Itä-Pakila district                | 3,537          | 3,774          | 3,647          | 3,631          | 3,260          |
| <b>5. North-Eastern Major District</b> | <b>83,842</b>  | <b>92,690</b>  | <b>100,305</b> | <b>101,294</b> | <b>117,081</b> |
| %                                      | 15.2           | 15.9           | 15.3           | 15.0           | 14.9           |
| 501 Latokartano district               | 12,557         | 21,149         | 24,813         | 25,002         | 27,257         |
| 502 Pukinmäki district                 | 9,176          | 8,292          | 8,786          | 8,629          | 11,731         |
| 503 Malmi district                     | 26,023         | 27,947         | 29,211         | 30,516         | 42,025         |
| 504 Suutarila district                 | 11,844         | 11,304         | 11,459         | 11,541         | 11,376         |
| 505 Puistola district                  | 18,346         | 18,372         | 20,419         | 20,157         | 18,784         |
| 506 Jakomäki district                  | 5,896          | 5,626          | 5,617          | 5,449          | 5,909          |
| <b>6. South-Eastern Major District</b> | <b>44,918</b>  | <b>46,666</b>  | <b>55,858</b>  | <b>58,386</b>  | <b>74,393</b>  |
| %                                      | 8.2            | 8.0            | 8.5            | 8.7            | 9.5            |
| 601 Kulosaari district                 | 3,761          | 3,770          | 4,126          | 4,156          | 3,961          |
| 602 Herttoniemi district               | 24,574         | 26,423         | 30,271         | 30,915         | 35,813         |
| 603 Laajasalo district                 | 16,583         | 16,473         | 21,461         | 23,315         | 34,619         |
| <b>7. Eastern Major District</b>       | <b>90,355</b>  | <b>103,227</b> | <b>112,869</b> | <b>114,361</b> | <b>132,505</b> |
| %                                      | 16.4           | 17.7           | 17.2           | 17.0           | 16.9           |
| 701 Vartiokylä district                | 20,235         | 21,363         | 21,832         | 22,707         | 27,139         |
| 702 Myllypuro district                 | 8,941          | 9,613          | 12,695         | 12,651         | 16,350         |
| 703 Mellunkylä district                | 35,932         | 36,425         | 39,381         | 39,934         | 43,365         |
| 704 Vuosaari district                  | 25,247         | 35,826         | 38,961         | 39,069         | 45,651         |
| <b>8. Östersundom Major District</b>   | .              | <b>2,113</b>   | <b>1,830</b>   | <b>1,742</b>   | <b>3,839</b>   |
| %                                      | .              | 0.4            | 0.3            | 0.3            | 0.5            |
| 801 Östersundom district               | .              | 2,113          | 1,830          | 1,742          | 3,839          |
| <b>Others</b>                          | <b>19,852</b>  | <b>17,918</b>  | <b>12,999</b>  | <b>13,126</b>  | <b>13,123</b>  |
| %                                      | 3.6            | 3.1            | 2.0            | 1.9            | 1.7            |
| <b>Inner Helsinki</b>                  | <b>167,721</b> | <b>173,899</b> | <b>210,135</b> | <b>219,483</b> | <b>380,591</b> |
| <b>Outer Helsinki</b>                  | <b>363,550</b> | <b>391,533</b> | <b>433,786</b> | <b>441,891</b> | <b>391,409</b> |

Helsinki's district division changed from 2013 on.

Source: Census lists (1980). Helsinki City's population register (1990). Statistics Finland (2000–2019) and City of Helsinki (2035).

|                                                      | 2005           | 2010           | 2015           | 2020           | 2023           |
|------------------------------------------------------|----------------|----------------|----------------|----------------|----------------|
| <b>All Helsinki residents</b>                        | <b>560,905</b> | <b>588,549</b> | <b>628,208</b> | <b>656,920</b> | <b>664,028</b> |
| <i>Citizenship</i>                                   |                |                |                |                |                |
| Finnish                                              | 530,135        | 544,088        | 570,601        | 591,983        | 594,508        |
| Other                                                | 30,770         | 44,461         | 57,607         | 64,937         | 79,992         |
| Percentage of the entire population                  | 5.5            | 7.6            | 9.2            | 9.9            | 11.9           |
| Europe                                               | 17,541         | 24,651         | 31,902         | 31,353         | 36,051         |
| EU countries                                         | 10,407         | 16,731         | 23,680         | 21,592         | 22,856         |
| Estonia                                              | 4,867          | 8,481          | 12,834         | 10,852         | 10,109         |
| Sweden                                               | 1,219          | 1,278          | 1,260          | 1,184          | 1,270          |
| EU member state since the 2000s (other than Estonia) | 562            | 1,691          | 2,540          | 3,180          | 3,764          |
| Other northern or western European                   | 291            | 349            | 387            | 1,970          | 2,029          |
| Other European                                       | 6,843          | 7,571          | 7,835          | 7,791          | 11,166         |
| Russia                                               | 5,240          | 6,008          | 6,252          | 5,780          | 6,929          |
| Africa                                               | 4,612          | 6,294          | 7,142          | 7,527          | 8,891          |
| North America                                        | 949            | 1,129          | 1,388          | 1,725          | 1,979          |
| Latin America or Caribbean                           | 601            | 979            | 1,233          | 1,533          | 1,844          |
| Southeast or East Asia                               | 2,571          | 4,333          | 6,198          | 8,221          | 10,936         |
| South West or Central Asia                           | 3,866          | 6,333          | 8,870          | 13,561         | 19,271         |
| Australia or Oceania                                 | 188            | 234            | 282            | 341            | 356            |
| No citizenship or citizenship unknown                | 442            | 508            | 592            | 676            | 664            |

Source: Statistics Finland.

## 2.5

Persons having received a Finnish citizenship  
by mother tongue 2010–2022

|                      | 2010       | 2015         | 2020         | 2021         | 2022         | 2023         |
|----------------------|------------|--------------|--------------|--------------|--------------|--------------|
| <b>Total</b>         | <b>884</b> | <b>1,931</b> | <b>1,810</b> | <b>1,563</b> | <b>2,417</b> | <b>2,925</b> |
| <i>Mother tongue</i> |            |              |              |              |              |              |
| Finnish              | 33         | 49           | 54           | 44           | 53           | 65           |
| Swedish              | 6          | 6            | 21           | 21           | 24           | 26           |
| Arabic               | 52         | 122          | 213          | 273          | 343          | 520          |
| Russian              | 316        | 419          | 335          | 299          | 516          | 480          |
| Somali               | 67         | 364          | 250          | 225          | 300          | 385          |
| Persian, Farsi       | 31         | 74           | 49           | 79           | 81           | 140          |
| English              | 22         | 68           | 107          | 67           | 107          | 119          |
| Kurdish              | 42         | 126          | 59           | 34           | 72           | 113          |
| Nepali               | 7          | 47           | 60           | 31           | 63           | 90           |
| Vietnamese           | 20         | 22           | 35           | 41           | 81           | 80           |
| Estonian             | 35         | 60           | 75           | 58           | 99           | 73           |
| Bengali              | 7          | 33           | 21           | 32           | 54           | 58           |
| Urdu                 | 6          | 32           | 11           | 10           | 19           | 58           |
| Turkish              | 23         | 25           | 24           | 19           | 42           | 55           |
| Spanish              | 17         | 37           | 54           | 31           | 65           | 53           |
| Albanian             | 24         | 23           | 30           | 30           | 24           | 37           |
| Other language       | 176        | 424          | 412          | 269          | 474          | 573          |

Source: Statistics Finland.

## 2.6

## Population by religious affiliation on 31 Dec 2000–2023

|                                             | 2000           | 2005           | 2010           | 2015           | 2020           | 2023           |
|---------------------------------------------|----------------|----------------|----------------|----------------|----------------|----------------|
| <b>Total</b>                                | <b>555,474</b> | <b>560,905</b> | <b>588,549</b> | <b>628,208</b> | <b>656,920</b> | <b>674,500</b> |
| Evangelical Lutheran Church of Finland      | 402,454        | 388,276        | 365,523        | 351,029        | 330,660        | 311,117        |
| Other Lutherans                             | 681            | 631            | 98             | 121            | 97             | 81             |
| Finnish Orthodox Church                     | 8,545          | 9,069          | 9,350          | 9,415          | 8,938          | 8,486          |
| Other Greek Orthodox                        | 658            | 974            | 1,242          | 1,702          | 1,944          | 1,945          |
| Jehovah's witnesses                         | 1,512          | 1,590          | 1,667          | 1,662          | 1,485          | 1,353          |
| Lutheran free churches of Finland           | 906            | 856            | 904            | 984            | 1,004          | 942            |
| Roman Catholic Church in Finland            | 2,605          | 2,921          | 3,398          | 3,943          | 4,133          | 4,245          |
| Adventist churches                          | 271            | 253            | 240            | 215            | 201            | 184            |
| Church of Jesus Christ of Latter-day Saints | 401            | 416            | 417            | 483            | 430            | 379            |
| Baptist congregations                       | 113            | 110            | 96             | 90             | 75             | 64             |
| Methodist churches                          | 234            | 203            | 191            | 183            | 186            | 164            |
| Jewish congregations                        | 678            | 661            | 633            | 607            | 601            | 564            |
| Islamic* congregations                      | 544            | 2,059          | 3,872          | 5,152          | 8,169          | 9,722          |
| Other                                       | 163            | 466            | 992            | 1,512          | 2,201          | 2,180          |
| No religious affiliation                    | 135,709        | 152,420        | 199,926        | 251,110        | 296,796        | 333,074        |

\*Only registered congregations.

Source: Statistics Finland.



|                                                       | All families |                   |                                               |                                    |                                |                                  |                     |                     |
|-------------------------------------------------------|--------------|-------------------|-----------------------------------------------|------------------------------------|--------------------------------|----------------------------------|---------------------|---------------------|
|                                                       | Total        | Children in these | Married couples without children <sup>2</sup> | Unmarried couples without children | Married couples, with children | Unmarried couples, with children | Mother and children | Father and children |
| <b>Families, total<sup>3</sup></b>                    |              |                   |                                               |                                    |                                |                                  |                     |                     |
| 1995                                                  | 131,082      | 115,826           | 38,343                                        | 20,844                             | 42,189                         | 7,411                            | 19,928              | 2,367               |
| 2000                                                  | 136,710      | 119,355           | 39,477                                        | 24,760                             | 39,917                         | 9,131                            | 20,825              | 2,600               |
| 2005                                                  | 137,776      | 114,924           | 42,195                                        | 26,387                             | 36,741                         | 9,429                            | 20,353              | 2,671               |
| 2010                                                  | 144,528      | 117,321           | 44,678                                        | 28,989                             | 37,561                         | 10,083                           | 20,370              | 2,847               |
| 2011                                                  | 146,113      | 118,343           | 44,913                                        | 29,709                             | 37,901                         | 10,335                           | 20,384              | 2,871               |
| 2012                                                  | 148,303      | 119,745           | 45,450                                        | 30,348                             | 38,391                         | 10,559                           | 20,597              | 2,958               |
| 2013                                                  | 150,602      | 121,664           | 45,731                                        | 31,304                             | 38,925                         | 10,887                           | 20,726              | 3,029               |
| 2014                                                  | 152,650      | 123,782           | 45,946                                        | 31,968                             | 39,634                         | 11,194                           | 20,841              | 3,067               |
| 2015                                                  | 154,753      | 125,858           | 46,094                                        | 32,732                             | 40,214                         | 11,503                           | 21,030              | 3,180               |
| 2016                                                  | 156,620      | 127,469           | 46,313                                        | 33,496                             | 40,497                         | 11,776                           | 21,338              | 3,200               |
| 2017                                                  | 158,063      | 129,541           | 46,759                                        | 33,506                             | 40,934                         | 11,930                           | 21,662              | 3,272               |
| 2018                                                  | 159,092      | 130,544           | 47,064                                        | 33,753                             | 41,244                         | 12,097                           | 21,626              | 3,308               |
| 2019                                                  | 160,469      | 131,315           | 47,575                                        | 34,232                             | 41,399                         | 12,246                           | 21,588              | 3,429               |
| 2020                                                  | 161,282      | 131,318           | 47,691                                        | 35,006                             | 41,182                         | 12,402                           | 21,595              | 3,406               |
| 2021                                                  | 160,797      | 131,327           | 47,290                                        | 34,999                             | 40,926                         | 12,845                           | 21,286              | 3,451               |
| 2022                                                  | 161,417      | 132,242           | 47,564                                        | 34,871                             | 40,848                         | 13,197                           | 21,443              | 3,494               |
| 2023                                                  | 163,008      | 134,066           | 47,807                                        | 34,957                             | 41,319                         | 13,481                           | 21,797              | 3,647               |
| <b>Families with at least one 0–17 year old child</b> |              |                   |                                               |                                    |                                |                                  |                     |                     |
| 1995                                                  | 57,073       | 93,423            | .                                             | .                                  | 34,813                         | 6,891                            | 14,036              | 1,333               |
| 2000                                                  | 56,867       | 95,256            | .                                             | .                                  | 32,200                         | 8,454                            | 14,837              | 1,376               |
| 2005                                                  | 55,208       | 93,072            | .                                             | .                                  | 30,079                         | 8,779                            | 14,865              | 1,485               |
| 2010                                                  | 55,973       | 93,097            | .                                             | .                                  | 30,707                         | 9,205                            | 14,512              | 1,549               |
| 2011                                                  | 56,410       | 93,761            | .                                             | .                                  | 30,989                         | 9,364                            | 14,510              | 1,547               |
| 2012                                                  | 57,055       | 94,823            | .                                             | .                                  | 31,371                         | 9,527                            | 14,560              | 1,597               |
| 2013                                                  | 57,806       | 96,394            | .                                             | .                                  | 31,812                         | 9,815                            | 14,597              | 1,582               |
| 2014                                                  | 58,776       | 98,201            | .                                             | .                                  | 32,379                         | 10,071                           | 14,706              | 1,620               |
| 2015                                                  | 59,877       | 100,148           | .                                             | .                                  | 32,990                         | 10,299                           | 14,873              | 1,715               |
| 2016                                                  | 60,821       | 101,972           | .                                             | .                                  | 33,351                         | 10,541                           | 15,174              | 1,755               |
| 2017                                                  | 61,819       | 104,080           | .                                             | .                                  | 33,836                         | 10,714                           | 15,458              | 1,811               |
| 2018                                                  | 62,360       | 105,362           | .                                             | .                                  | 34,110                         | 10,906                           | 15,501              | 1,843               |
| 2019                                                  | 62,972       | 106,633           | .                                             | .                                  | 34,392                         | 11,089                           | 15,565              | 1,926               |
| 2020                                                  | 63,788       | 107,962           | .                                             | .                                  | 34,590                         | 11,312                           | 15,856              | 2,030               |
| 2021                                                  | 64,035       | 108,315           | .                                             | .                                  | 34,481                         | 11,755                           | 15,728              | 2,071               |
| 2022                                                  | 64,628       | 109,239           | .                                             | .                                  | 34,453                         | 12,100                           | 15,979              | 2,096               |
| 2023                                                  | 65,620       | 110,386           | .                                             | .                                  | 34,884                         | 12,280                           | 16,221              | 2,235               |
| <b>Families with at least one 0–6 year old child</b>  |              |                   |                                               |                                    |                                |                                  |                     |                     |
| 1995                                                  | 30,287       | 41,149            | .                                             | .                                  | 18,572                         | 5,086                            | 6,350               | 279                 |
| 2000                                                  | 28,644       | 40,113            | .                                             | .                                  | 16,592                         | 5,803                            | 5,983               | 266                 |
| 2005                                                  | 26,623       | 35,974            | .                                             | .                                  | 15,413                         | 5,462                            | 5,469               | 279                 |
| 2010                                                  | 28,588       | 39,190            | .                                             | .                                  | 16,870                         | 5,853                            | 5,579               | 286                 |
| 2011                                                  | 29,356       | 40,238            | .                                             | .                                  | 17,280                         | 6,122                            | 5,652               | 302                 |
| 2012                                                  | 30,139       | 41,349            | .                                             | .                                  | 17,663                         | 6,295                            | 5,857               | 324                 |
| 2013                                                  | 30,981       | 42,547            | .                                             | .                                  | 18,131                         | 6,559                            | 5,965               | 326                 |
| 2014                                                  | 31,849       | 43,689            | .                                             | .                                  | 18,611                         | 6,830                            | 6,074               | 334                 |
| 2015                                                  | 32,604       | 44,566            | .                                             | .                                  | 18,998                         | 7,072                            | 6,165               | 369                 |
| 2016                                                  | 33,033       | 45,069            | .                                             | .                                  | 19,151                         | 7,237                            | 6,268               | 377                 |
| 2017                                                  | 33,368       | 45,296            | .                                             | .                                  | 19,233                         | 7,381                            | 6,382               | 372                 |
| 2018                                                  | 33,250       | 45,097            | .                                             | .                                  | 19,088                         | 7,443                            | 6,340               | 379                 |
| 2019                                                  | 33,141       | 44,579            | .                                             | .                                  | 18,947                         | 7,518                            | 6,278               | 398                 |
| 2020                                                  | 32,975       | 44,144            | .                                             | .                                  | 18,716                         | 7,629                            | 6,229               | 401                 |
| 2021                                                  | 32,459       | 43,399            | .                                             | .                                  | 18,228                         | 7,911                            | 5,943               | 377                 |
| 2022                                                  | 32,020       | 42,648            | .                                             | .                                  | 17,730                         | 7,976                            | 5,951               | 363                 |
| 2023                                                  | 32,000       | 42,316            | .                                             | .                                  | 17,631                         | 8,023                            | 5,950               | 396                 |

<sup>1</sup> At year-end 1990 and at turn of the year 1994/1995–2023/2024.<sup>2</sup> Also incl. registered couples of the same sex.<sup>3</sup> Children regardless of age.

Source: Census (1990). Helsinki City's population register and Statistics Finland.

|                            | Population<br>Dec 31,<br>2023 | Population<br>change<br>2023 <sup>1</sup> | Surplus<br>of births<br>over deaths | Net migration |                           |                    |
|----------------------------|-------------------------------|-------------------------------------------|-------------------------------------|---------------|---------------------------|--------------------|
|                            |                               |                                           |                                     | Total         | In and out of<br>Helsinki | Within<br>Helsinki |
| <b>Helsinki, total</b>     | <b>674,500</b>                | <b>10,472</b>                             | <b>359</b>                          | <b>10,219</b> | <b>10,219</b>             | <b>0</b>           |
| <i>Major Districts</i>     |                               |                                           |                                     |               |                           |                    |
| <b>1. Southern</b>         | <b>123,568</b>                | <b>1,691</b>                              | <b>306</b>                          | <b>1,384</b>  | <b>2,583</b>              | <b>-1,199</b>      |
| 101 Vironniemi district    | 13,096                        | 112                                       | 41                                  | 75            | 320                       | -245               |
| 102 Ullanlinna district    | 24,491                        | 117                                       | 42                                  | 78            | 399                       | -321               |
| 103 Kampinmalmi district   | 45,469                        | 1,036                                     | 161                                 | 879           | 1,348                     | -469               |
| 104 Taka-Töölö district    | 15,635                        | 292                                       | -22                                 | 305           | 467                       | -162               |
| 105 Lauttasaari district   | 24,877                        | 134                                       | 84                                  | 47            | 49                        | -2                 |
| <b>2. Western</b>          | <b>113,982</b>                | <b>1,607</b>                              | <b>-20</b>                          | <b>1,603</b>  | <b>1,803</b>              | <b>-200</b>        |
| 201 Reijola district       | 16,784                        | 128                                       | -9                                  | 133           | 329                       | -196               |
| 202 Munkkiniemi district   | 19,149                        | 216                                       | -2                                  | 221           | 197                       | 24                 |
| 203 Haaga district         | 27,467                        | 306                                       | -133                                | 413           | 519                       | -106               |
| 204 Pitäjänmäki district   | 18,887                        | 309                                       | 14                                  | 306           | 337                       | -31                |
| 205 Kaarela district       | 31,695                        | 648                                       | 110                                 | 530           | 421                       | 109                |
| <b>3. Central</b>          | <b>103,995</b>                | <b>2,671</b>                              | <b>111</b>                          | <b>2,539</b>  | <b>2,806</b>              | <b>-267</b>        |
| 301 Kallio district        | 35,598                        | 794                                       | 33                                  | 761           | 1,049                     | -288               |
| 302 Alppiharju district    | 11,572                        | -18                                       | -6                                  | -14           | 395                       | -409               |
| 303 Vallila district       | 16,878                        | -38                                       | 42                                  | -79           | 311                       | -390               |
| 304 Pasila district        | 14,188                        | 1,512                                     | 55                                  | 1,466         | 648                       | 818                |
| 305 Vanhakaupunki district | 25,759                        | 421                                       | -13                                 | 405           | 403                       | 2                  |
| <b>4. Northern</b>         | <b>44,046</b>                 | <b>858</b>                                | <b>-102</b>                         | <b>944</b>    | <b>326</b>                | <b>618</b>         |
| 401 Maunula district       | 9,047                         | 165                                       | -37                                 | 202           | 80                        | 122                |
| 402 Länsi-Pakila district  | 7,165                         | 92                                        | -21                                 | 98            | 39                        | 59                 |
| 403 Tuomarinkylä district  | 8,605                         | -45                                       | 36                                  | -77           | -91                       | 14                 |
| 404 Oulunkylä district     | 15,598                        | 694                                       | -76                                 | 764           | 282                       | 482                |
| 405 Itä-Pakila district    | 3,631                         | -48                                       | -4                                  | -43           | 16                        | -59                |
| <b>5. North-Eastern</b>    | <b>101,294</b>                | <b>1,544</b>                              | <b>177</b>                          | <b>1,340</b>  | <b>1,462</b>              | <b>-122</b>        |
| 501 Latokartano district   | 25,002                        | 287                                       | 88                                  | 190           | 483                       | -293               |
| 502 Pukinmäki district     | 8,629                         | 46                                        | 16                                  | 23            | 176                       | -153               |
| 503 Malmi district         | 30,516                        | 822                                       | 4                                   | 806           | 427                       | 379                |
| 504 Suutarila district     | 11,541                        | 162                                       | 24                                  | 136           | 131                       | 5                  |
| 505 Puistola district      | 20,157                        | 59                                        | 54                                  | 10            | 230                       | -220               |
| 506 Jakomäki district      | 5,449                         | 168                                       | -9                                  | 175           | 15                        | 160                |
| <b>6. South-Eastern</b>    | <b>58,386</b>                 | <b>1,090</b>                              | <b>150</b>                          | <b>930</b>    | <b>426</b>                | <b>504</b>         |
| 601 Kulosaari district     | 4,156                         | 81                                        | 8                                   | 76            | -29                       | 105                |
| 602 Herttoniemi district   | 30,915                        | 415                                       | 46                                  | 371           | 322                       | 49                 |
| 603 Laajasalo district     | 23,315                        | 594                                       | 96                                  | 483           | 133                       | 350                |
| <b>7. Eastern</b>          | <b>114,361</b>                | <b>1,160</b>                              | <b>-141</b>                         | <b>1,268</b>  | <b>2,108</b>              | <b>-840</b>        |
| 701 Vartiokylä district    | 22,707                        | 779                                       | -55                                 | 811           | 451                       | 360                |
| 702 Myllypuro district     | 12,651                        | -216                                      | -42                                 | -168          | 133                       | -301               |
| 703 Mellunkylä district    | 39,934                        | 318                                       | -77                                 | 392           | 957                       | -565               |
| 704 Vuosaari district      | 39,069                        | 279                                       | 33                                  | 233           | 567                       | -334               |
| <b>8. Östersundom</b>      | <b>1,742</b>                  | <b>-43</b>                                | <b>2</b>                            | <b>-43</b>    | <b>-24</b>                | <b>-19</b>         |
| 801 Östersundom district   | 1,742                         | -43                                       | 2                                   | -43           | -24                       | -19                |
| <b>Others</b>              | <b>13,126</b>                 | <b>-106</b>                               | <b>-124</b>                         | <b>254</b>    | <b>-1,271</b>             | <b>1,525</b>       |
| <b>Inner Helsinki</b>      | <b>219,483</b>                | <b>4,355</b>                              | <b>324</b>                          | <b>4,008</b>  | <b>5,670</b>              | <b>-1,662</b>      |
| <b>Outer Helsinki</b>      | <b>441,891</b>                | <b>6,223</b>                              | <b>159</b>                          | <b>5,957</b>  | <b>5,820</b>              | <b>137</b>         |

<sup>1</sup> Incl. corrections of population figure.

Source: Statistics Finland.

|                       | Born alive |                                       | Boys   |                | Out of wedlock |                |
|-----------------------|------------|---------------------------------------|--------|----------------|----------------|----------------|
|                       | Number     | Live birth rate,<br>0/00 <sup>1</sup> | Number | % <sup>2</sup> | Number         | % <sup>2</sup> |
| <b>Annual average</b> |            |                                       |        |                |                |                |
| 1901–05               | 2,889      | 28.5                                  | 1,468  | 50.8           | 453            | 15.7           |
| 1906–10               | 3,558      | 28.8                                  | 1,831  | 51.5           | 603            | 16.9           |
| 1911–15               | 3,464      | 22.0                                  | 1,776  | 51.3           | 658            | 19.0           |
| 1916–20               | 2,703      | 15.0                                  | 1,393  | 51.5           | 385            | 14.2           |
| 1921–25               | 2,610      | 13.3                                  | 1,351  | 51.8           | 261            | 10.0           |
| 1926–30               | 2,652      | 12.2                                  | 1,341  | 50.6           | 237            | 8.9            |
| 1931–35               | 2,575      | 10.6                                  | 1,322  | 51.3           | 257            | 10.0           |
| 1936–40               | 3,722      | 13.6                                  | 1,916  | 51.5           | 375            | 10.1           |
| 1941–45               | 5,987      | 20.1                                  | 3,111  | 52.0           | 462            | 7.7            |
| 1946–50               | 7,723      | 22.4                                  | 3,969  | 51.4           | 485            | 6.3            |
| 1951–55               | 6,731      | 17.2                                  | 3,420  | 50.8           | 488            | 7.3            |
| 1956–60               | 7,505      | 17.3                                  | 3,868  | 51.5           | 491            | 6.5            |
| 1961–65               | 8,492      | 17.6                                  | 4,343  | 51.1           | 510            | 6.0            |
| 1966–70               | 8,389      | 15.9                                  | 4,274  | 50.9           | 569            | 6.8            |
| 1971–75               | 6,454      | 12.6                                  | 3,299  | 51.1           | 625            | 9.7            |
| 1976–80               | 5,994      | 12.3                                  | 3,114  | 52.0           | 828            | 13.8           |
| 1981–85               | 5,939      | 12.3                                  | 3,031  | 51.0           | 998            | 16.8           |
| 1986–90               | 6,110      | 12.5                                  | 3,129  | 51.2           | 1,553          | 25.4           |
| 1991–95               | 6,692      | 13.2                                  | 3,440  | 51.4           | 2,261          | 33.8           |
| 1996–2000             | 6,351      | 11.7                                  | 3,238  | 51.0           | 2,449          | 38.6           |
| 2001–2005             | 6,163      | 11.0                                  | 3,156  | 51.2           | 2,463          | 40.0           |
| 2006–2010             | 6,377      | 11.1                                  | 3,254  | 51.0           | 2,554          | 40.1           |
| 2011–2015             | 6,816      | 11.2                                  | 3,513  | 51.5           | 2,814          | 41.3           |
| 2016–2020             | 6,548      | 10.2                                  | 3,355  | 51.2           | 2,737          | 41.8           |
| <b>Annually</b>       |            |                                       |        |                |                |                |
| 2010                  | 6,907      | 11.2                                  | 3,520  | 51.0           | 2,850          | 41.3           |
| 2011                  | 7,016      | 11.2                                  | 3,654  | 52.1           | 2,977          | 42.4           |
| 2012                  | 6,803      | 10.8                                  | 3,483  | 51.2           | 2,881          | 42.3           |
| 2013                  | 6,566      | 10.3                                  | 3,322  | 50.6           | 2,750          | 41.9           |
| 2014                  | 6,388      | 9.9                                   | 3,267  | 51.1           | 2,610          | 40.9           |
| 2015                  | 6,332      | 9.7                                   | 3,221  | 50.9           | 2,658          | 42.0           |
| 2016                  | 6,803      | 10.8                                  | 3,483  | 51.2           | 2,881          | 42.3           |
| 2017                  | 6,566      | 10.3                                  | 3,322  | 50.6           | 2,750          | 41.9           |
| 2018                  | 6,388      | 9.9                                   | 3,267  | 51.1           | 2,610          | 40.9           |
| 2019                  | 6,332      | 9.7                                   | 3,221  | 50.9           | 2,658          | 42.0           |
| 2020                  | 6,650      | 10.1                                  | 3,482  | 52.4           | 2,786          | 41.9           |
| 2021                  | 7,082      | 10.8                                  | 3,605  | 50.9           | 3,224          | 45.5           |
| 2022                  | 6,176      | 9.3                                   | 3,188  | 51.6           | 2,822          | 45.7           |
| 2023                  | 6,099      | 9.1                                   | 3,149  | 51.6           | 2,751          | 45.1           |

<sup>1</sup> Per 1,000 persons in the average population number.

<sup>2</sup> Of all live births.

Source: Statistics Finland and for 1986–93 Helsinki's population data system.

# 2.10

## Deaths<sup>1</sup> in Helsinki in 1901–2023

|                       | Men    |      | Women  |      | Total  |                                      | Of which less than 1 year olds |      |
|-----------------------|--------|------|--------|------|--------|--------------------------------------|--------------------------------|------|
|                       | Number | %    | Number | %    | Number | General death rate 0/00 <sup>2</sup> | Total                          | Boys |
| <b>Annual average</b> |        |      |        |      |        |                                      |                                |      |
| 1901–05               | 937    | 53,5 | 816    | 46,5 | 1,753  | 17.3                                 | 550                            | 300  |
| 1906–10               | 1,077  | 53,1 | 953    | 47,0 | 2,030  | 16.4                                 | 556                            | 302  |
| 1911–15               | 1,170  | 52,5 | 1,059  | 47,5 | 2,229  | 14.2                                 | 499                            | 280  |
| 1916–20               | 1,642  | 57,6 | 1,209  | 42,4 | 2,851  | 15.9                                 | 313                            | 167  |
| 1921–25               | 1,092  | 51,4 | 1,035  | 48,7 | 2,126  | 10.8                                 | 188                            | 103  |
| 1926–30               | 1,373  | 51,2 | 1,310  | 48,8 | 2,683  | 12.4                                 | 176                            | 94   |
| 1931–35               | 1,367  | 49,8 | 1,377  | 50,2 | 2,744  | 11.2                                 | 147                            | 81   |
| 1936–40               | 1,940  | 54,4 | 1,630  | 45,7 | 3,569  | 13.1                                 | 181                            | 104  |
| 1941–45               | 2,703  | 58,6 | 1,908  | 41,4 | 4,610  | 15.5                                 | 339                            | 185  |
| 1946–50               | 1,989  | 51,1 | 1,902  | 48,9 | 3,891  | 11.3                                 | 342                            | 192  |
| 1951–55               | 1,829  | 48,5 | 1,941  | 51,5 | 3,770  | 9.7                                  | 150                            | 88   |
| 1956–60               | 1,986  | 47,6 | 2,184  | 52,4 | 4,169  | 9.6                                  | 140                            | 77   |
| 1961–65               | 2,210  | 46,6 | 2,533  | 53,4 | 4,743  | 9.8                                  | 163                            | 93   |
| 1966–70               | 2,499  | 48,4 | 2,663  | 51,6 | 5,162  | 9.8                                  | 124                            | 67   |
| 1971–75               | 2,546  | 49,0 | 2,653  | 51,0 | 5,198  | 10.2                                 | 71                             | 43   |
| 1976–80               | 2,479  | 47,3 | 2,761  | 52,7 | 5,240  | 10.7                                 | 46                             | 26   |
| 1981–85               | 2,387  | 45,6 | 2,852  | 54,4 | 5,238  | 10.8                                 | 38                             | 23   |
| 1986–90               | 2,471  | 44,1 | 3,127  | 55,9 | 5,598  | 11.4                                 | 34                             | 19   |
| 1991–95               | 2,312  | 43,5 | 2,999  | 56,5 | 5,311  | 10.5                                 | 33                             | 19   |
| 1996–2000             | 2,272  | 43,7 | 2,926  | 56,3 | 5,197  | 9.6                                  | 28                             | 15   |
| 2001–2005             | 2,262  | 44,7 | 2,798  | 55,3 | 5,060  | 9.0                                  | 19                             | 8    |
| 2006–2010             | 2,293  | 46,2 | 2,667  | 53,8 | 4,959  | 8.6                                  | 15                             | 8    |
| 2011–2015             | 2,316  | 45,9 | 2,726  | 54,1 | 5,042  | 8.3                                  | 15                             | 8    |
| 2016–2020             | 2,429  | 47.0 | 2,739  | 53.0 | 5,168  | 8.0                                  | 11                             | 7    |
| <b>Annually</b>       |        |      |        |      |        |                                      |                                |      |
| 2015                  | 2,356  | 45.9 | 2,779  | 54.1 | 5,135  | 8.2                                  | 10                             | 5    |
| 2016                  | 2,372  | 46.2 | 2,758  | 53.8 | 5,130  | 8.1                                  | 12                             | 6    |
| 2017                  | 2,380  | 47.2 | 2,662  | 52.8 | 5,042  | 7.9                                  | 8                              | 7    |
| 2018                  | 2,409  | 46.4 | 2,782  | 53.6 | 5,191  | 8.0                                  | 10                             | 6    |
| 2019                  | 2,415  | 47.2 | 2,703  | 52.8 | 5,118  | 7.9                                  | 9                              | 6    |
| 2020                  | 2,568  | 47.9 | 2,789  | 52.1 | 5,357  | 8.2                                  | 14                             | 8    |
| 2021                  | 2,622  | 47.3 | 2,926  | 52.7 | 5,548  | 8.4                                  | 9                              | 4    |
| 2022                  | 2,778  | 46.9 | 3,131  | 52.8 | 5,929  | 9.0                                  | 12                             | 6    |
| 2023                  | 2,727  | 47.5 | 3,013  | 52.5 | 5,740  | 8.6                                  | 10                             | 3    |

<sup>1</sup> 1950 or earlier including all those declared dead. <sup>2</sup> Per 1,000 persons in the average population number. Source: Statistics Finland and for 1986–93 Helsinki's population data system.

# 2.11

## Life expectancy (average expectation of remaining lifetime) 1991–2023

| Age | 1991–95 |      |       | 2001–05 |      |       | 2011–15 |      |       | 2023  |      |       |
|-----|---------|------|-------|---------|------|-------|---------|------|-------|-------|------|-------|
|     | Total   | Men  | Women | Total   | Men  | Women | Total   | Men  | Women | Total | Men  | Women |
| 0   | 75.8    | 71.5 | 79.3  | 78.2    | 74.4 | 81.3  | 80.7    | 77.5 | 83.3  | 81.7  | 79.0 | 84.1  |
| 10  | 66.3    | 62.0 | 69.8  | 68.6    | 64.8 | 71.7  | 70.9    | 67.7 | 73.6  | 71.9  | 69.1 | 74.4  |
| 20  | 56.5    | 52.2 | 59.9  | 58.7    | 55.0 | 61.8  | 61.0    | 57.8 | 63.7  | 62.1  | 59.3 | 64.6  |
| 30  | 46.9    | 42.9 | 50.2  | 49.0    | 45.4 | 52.0  | 51.3    | 48.2 | 53.9  | 52.4  | 49.7 | 54.7  |
| 40  | 37.6    | 33.8 | 40.6  | 39.5    | 36.1 | 42.2  | 41.6    | 38.7 | 44.1  | 42.7  | 40.1 | 44.9  |
| 50  | 28.8    | 25.4 | 31.4  | 30.5    | 27.3 | 33.0  | 32.3    | 29.5 | 34.5  | 33.1  | 30.7 | 35.2  |
| 60  | 20.6    | 17.7 | 22.5  | 22.2    | 19.4 | 24.1  | 23.7    | 21.3 | 25.5  | 24.1  | 21.8 | 25.9  |
| 70  | 13.5    | 11.3 | 14.5  | 14.7    | 12.5 | 15.9  | 16.0    | 14.1 | 17.2  | 16.2  | 14.4 | 17.5  |
| 80  | 7.8     | 6.7  | 8.1   | 8.4     | 7.1  | 8.9   | 9.1     | 8.0  | 9.7   | 9.3   | 8.1  | 10.0  |
| 85  | 5.6     | 5.0  | 5.8   | 6.0     | 5.0  | 6.3   | 6.4     | 5.6  | 6.7   | 6.5   | 5.6  | 7.0   |

Source: Statistics Finland and for 1986–93 Helsinki's population data system.

# 2.12

## Direction of migration 1986–2023

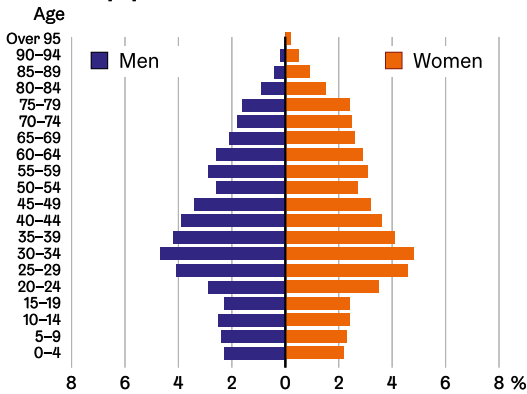
|                                  | 1986–90       | 1991–95       | 1996–2000     | 2001–05       | 2006–10       | 2011–15       | 2016–20       | 2023          |
|----------------------------------|---------------|---------------|---------------|---------------|---------------|---------------|---------------|---------------|
| <b>Migrated from<sup>1</sup></b> | <b>22,663</b> | <b>25,565</b> | <b>30,814</b> | <b>32,725</b> | <b>36,084</b> | <b>39,996</b> | <b>42,696</b> | <b>48,253</b> |
| Helsinki Metropolitan Area       | 7,533         | 8,885         | 9,511         | 10,643        | 10,609        | 12,435        | 13,672        | 15,003        |
| Rest of Uusimaa province         | 2,882         | 5,010         | 4,819         | 4,498         | 4,638         | 5,165         | 5,160         | 5,059         |
| Rest of Finland                  | 11,180        | 11,847        | 15,728        | 14,743        | 15,984        | 17,022        | 17,833        | 15,664        |
| Abroad                           | 2,035         | 3,626         | 3,329         | 4,292         | 6,380         | 7,005         | 7,324         | 12,527        |
| <b>Migrated to<sup>1</sup></b>   | <b>22,014</b> | <b>20,539</b> | <b>25,930</b> | <b>32,700</b> | <b>32,405</b> | <b>33,758</b> | <b>38,195</b> | <b>38,034</b> |
| Helsinki Metropolitan Area       | 9,906         | 9,663         | 10,833        | 13,559        | 12,767        | 13,541        | 16,067        | 16,671        |
| Rest of Uusimaa province         | 4,357         | 4,476         | 5,331         | 6,006         | 5,724         | 5,170         | 5,524         | 5,618         |
| Rest of Finland                  | 7,846         | 7,509         | 9,651         | 11,695        | 12,289        | 12,564        | 12,685        | 11,445        |
| Abroad                           | 1,307         | 1,411         | 2,635         | 3,117         | 3,306         | 3,989         | 5,113         | 4,300         |
| <b>Net migration<sup>1</sup></b> | <b>649</b>    | <b>5,026</b>  | <b>4,883</b>  | <b>25</b>     | <b>3,679</b>  | <b>6,239</b>  | <b>4,501</b>  | <b>10,219</b> |
| Helsinki Metropolitan Area       | -2,373        | -779          | -1,321        | -2,915        | -2,158        | -1,107        | -2,395        | -1,668        |
| Rest of Uusimaa province         | -1,474        | 535           | -512          | -1,507        | -1,086        | -5            | -364          | -559          |
| Rest of Finland                  | 3,334         | 4,338         | 6,077         | 3,049         | 3,695         | 4,458         | 5,148         | 4,219         |
| Abroad                           | 727           | 2,216         | 694           | 1,175         | 3,074         | 3,016         | 2,211         | 8,227         |

<sup>1</sup> Incl. area unknown.

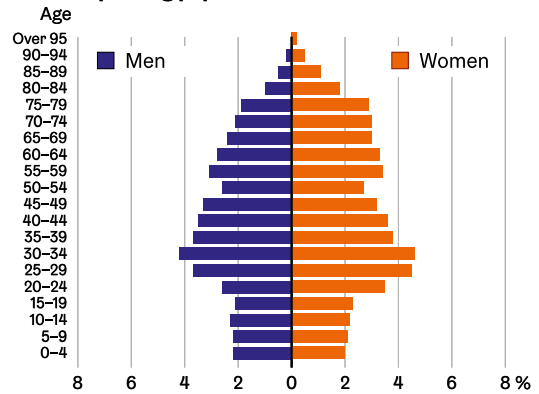
Source: Statistics Finland and for 1986–93 Helsinki's population data system.

## Population by mother tongue and age 31.12.2023

The whole population



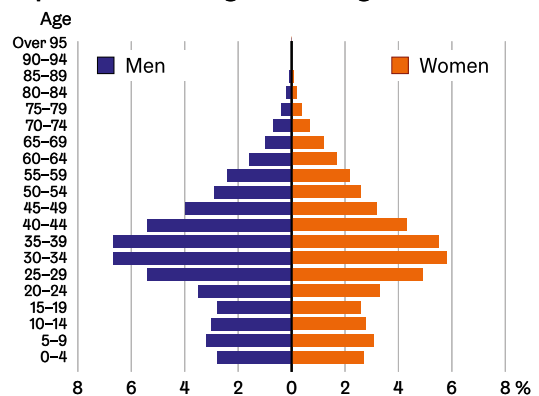
Finnish-speaking population<sup>1</sup>



Swedish-speaking population



Population with a foreign mother tongue



<sup>1</sup> Incl. Sami-language residents.

Source: Statistics Finland.

# Housing

## List of diagrams and tables

|            |                                                                                                                    |           |
|------------|--------------------------------------------------------------------------------------------------------------------|-----------|
| <b>3.1</b> | <b>Dwellings by type of building 1970–2023 .....</b>                                                               | <b>22</b> |
| <b>3.2</b> | <b>Dwellings by tenure status: Helsinki 1950–2023. Helsinki Region, Tampere, Turku, Oulu and Finland 2023.....</b> | <b>23</b> |
| <b>3.3</b> | <b>Dwellings by size of dwelling (number of rooms) in 2000–2023 .....</b>                                          | <b>24</b> |
| <b>3.4</b> | <b>Housing standard by number of rooms 2000–2023.....</b>                                                          | <b>24</b> |
| <b>3.5</b> | <b>Indicators of level of housing in 2000–2023 .....</b>                                                           | <b>25</b> |
| <b>3.6</b> | <b>Average rent of rented dwellings 2020 and 2023 .....</b>                                                        | <b>25</b> |
| <b>3.7</b> | <b>Price index of dwellings in 2023 .....</b>                                                                      | <b>26</b> |
| <b>3.8</b> | <b>Completed dwellings in Helsinki by type of building in 1985–2023.....</b>                                       | <b>27</b> |
| <b>3.9</b> | <b>Completed dwellings in Helsinki by type of dwelling in 2000–2023 .....</b>                                      | <b>28</b> |

## 3.1

## Dwellings by type of building 1970–2023

|                                    | Dwellings total <sup>1</sup> | Type of house |                 |                 |                 |                 |
|------------------------------------|------------------------------|---------------|-----------------|-----------------|-----------------|-----------------|
|                                    |                              | Total         | Small houses    |                 | Blocks of flats | Other buildings |
|                                    |                              |               | detached houses | terraced houses |                 |                 |
| <b>Helsinki</b>                    |                              |               |                 |                 |                 |                 |
| 1970                               | 189,734                      | 18,634        | 15,444          | 3,190           | 167,430         | 3,060           |
| 1980                               | 221,341                      | 22,540        | 14,621          | 7,919           | 194,547         | 4,254           |
| 1990                               | 259,033                      | 32,833        | 19,346          | 13,487          | 220,376         | 5,746           |
| 2000                               | 296,013                      | 37,664        | 21,472          | 16,192          | 253,315         | 5,034           |
| 2005                               | 313,695                      | 40,850        | 23,211          | 17,639          | 268,212         | 4,633           |
| 2015                               | 350,314                      | 46,137        | 26,837          | 19,300          | 299,895         | 4,282           |
| 2020                               | 376,065                      | 48,067        | 27,437          | 20,630          | 323,197         | 4,801           |
| 2021                               | 382,153                      | 48,376        | 27,631          | 20,745          | 328,961         | 4,816           |
| 2022                               | 387,053                      | 48,829        | 27,864          | 20,965          | 333,481         | 4,743           |
| 2023                               | 394,373                      | 48,925        | 27,879          | 21,046          | 340,980         | 4,468           |
|                                    | %                            |               |                 |                 |                 |                 |
| 1970                               | 100                          | 9.8           | 8.1             | 1.7             | 88.2            | 1.6             |
| 1980                               | 100                          | 10.2          | 6.6             | 3.6             | 87.9            | 1.9             |
| 1990                               | 100                          | 12.7          | 7.5             | 5.2             | 85.1            | 2.2             |
| 2000                               | 100                          | 12.7          | 7.3             | 5.5             | 85.6            | 1.7             |
| 2005                               | 100                          | 13.0          | 7.4             | 5.6             | 85.5            | 1.5             |
| 2015                               | 100                          | 13.2          | 7.7             | 5.5             | 85.6            | 1.2             |
| 2020                               | 100                          | 12.8          | 7.3             | 5.5             | 85.9            | 1.3             |
| 2021                               | 100                          | 12.7          | 7.2             | 5.4             | 86.1            | 1.3             |
| 2022                               | 100                          | 12.6          | 7.2             | 5.4             | 86.2            | 1.2             |
| 2023                               | 100                          | 12.4          | 7.1             | 5.3             | 86.5            | 1.1             |
| <b>2023</b>                        |                              |               |                 |                 |                 |                 |
| Rest of Helsinki Metropolitan Area | 100                          | 34.1          | 22.3            | 11.7            | 65.3            | 0.6             |
| Helsinki Region                    | 100                          | 28.8          | 19.2            | 9.6             | 70.2            | 1.0             |
| Tampere                            | 100                          | 21.6          | 12.3            | 9.2             | 76.9            | 1.5             |
| Turku                              | 100                          | 22.9          | 11.7            | 11.2            | 75.5            | 1.6             |
| Oulu                               | 100                          | 42.7          | 28.1            | 14.6            | 55.9            | 1.4             |
| <b>Finland, total</b>              | <b>100</b>                   | <b>50.1</b>   | <b>36.9</b>     | <b>13.1</b>     | <b>48.2</b>     | <b>1.8</b>      |

<sup>1</sup> Including dwellings whose type of house is unknown.

Source: Censuses and Statistics Finland's Area Data Base.

## 3.2

## Dwellings by tenure status: Helsinki 1950–2023. Helsinki Region, Tampere, Turku, Oulu and Finland 2023

|                                    | All dwellings | Owner occupied | Rented      | of which                    |                       | Tenant-owned dwelling status | Other or unknown tenure |
|------------------------------------|---------------|----------------|-------------|-----------------------------|-----------------------|------------------------------|-------------------------|
|                                    |               |                |             | <i>arava</i> social housing | other rented dwelling |                              |                         |
| 1950                               | 105,883       | 25,748         | 79,744      |                             |                       |                              | 391                     |
| 1960                               | 145,470       | 59,312         | 83,900      |                             |                       |                              | 2,258                   |
| 1970                               | 189,734       | 81,618         | 102,079     |                             |                       |                              | 6,037                   |
| 1980                               | 221,341       | 110,095        | 94,444      |                             |                       |                              | 16,802                  |
| 1990                               | 259,033       | 141,785        | 98,670      | 42,803                      | 55,867                | ..                           | 22,893                  |
| 2000                               | 296,013       | 128,020        | 138,533     | 65,838                      | 72,695                | 4,752                        | 24,708                  |
| 2005                               | 313,695       | 141,165        | 141,277     | 69,855                      | 71,422                | 6,300                        | 24,953                  |
| 2010 <sup>1</sup>                  | 328,164       | 146,000        | 146,647     | 69,877                      | 76,770                | 7,152                        | 28,365                  |
| 2015                               | 350,314       | 148,302        | 162,215     | 69,794                      | 92,421                | 9,000                        | 30,797                  |
| 2020                               | 376,065       | 160,034        | 177,964     | 68,635                      | 109,329               | 11,914                       | 26,153                  |
| 2022                               | 387,053       | 159,649        | 184,827     | 65,227                      | 119,600               | 12,472                       | 30,105                  |
| 2023                               | 394,373       | 162,139        | 188,843     | 65,786                      | 123,057               | 13,167                       | 30,224                  |
|                                    | %             |                |             |                             |                       |                              |                         |
| 1950                               | 100           | 24.3           | 75.3        |                             |                       |                              | 0.4                     |
| 1960                               | 100           | 40.8           | 57.7        |                             |                       |                              | 1.6                     |
| 1970                               | 100           | 43.0           | 53.8        |                             |                       |                              | 3.2                     |
| 1980                               | 100           | 49.7           | 42.7        |                             |                       |                              | 7.6                     |
| 1990                               | 100           | 54.7           | 38.1        | 16.5                        | 21.6                  | ..                           | 8.8                     |
| 2000                               | 100           | 43.2           | 46.8        | 22.2                        | 24.6                  | 1.6                          | 8.3                     |
| 2005                               | 100           | 45.0           | 45.0        | 22.3                        | 22.8                  | 2.0                          | 8.0                     |
| 2010 <sup>1</sup>                  | 100           | 44.5           | 44.7        | 21.3                        | 23.4                  | 2.2                          | 8.6                     |
| 2015                               | 100           | 42.3           | 46.3        | 19.9                        | 26.4                  | 2.6                          | 8.8                     |
| 2020                               | 100           | 42.6           | 47.3        | 18.3                        | 29.1                  | 3.2                          | 7.0                     |
| 2021                               | 100           | 41.8           | 47.4        | 18.2                        | 29.3                  | 3.2                          | 7.6                     |
| 2022                               | 100           | 41.3           | 47.8        | 16.9                        | 30.9                  | 3.2                          | 7.8                     |
| 2023                               | 100           | 41.1           | 47.9        | 16.7                        | 31.2                  | 3.3                          | 7.7                     |
| <b>2023</b>                        |               |                |             |                             |                       |                              |                         |
| Rest of Helsinki Metropolitan Area | 100           | 48.6           | 40.8        | 13.5                        | 27.2                  | 4.1                          | 6.6                     |
| Helsinki Region                    | 100           | 47.6           | 41.5        | 14.1                        | 27.4                  | 3.6                          | 7.3                     |
| Tampere                            | 100           | 41.2           | 49.4        | 11.4                        | 38.0                  | 2.5                          | 6.8                     |
| Turku                              | 100           | 40.0           | 48.5        | 12.0                        | 36.6                  | 2.0                          | 9.4                     |
| Oulu                               | 100           | 49.9           | 41.4        | 11.2                        | 30.2                  | 1.5                          | 7.1                     |
| <b>Finland total</b>               | <b>100</b>    | <b>54.1</b>    | <b>33.3</b> | <b>10.1</b>                 | <b>23.3</b>           | <b>1.7</b>                   | <b>10.8</b>             |

<sup>1</sup> Since 2009 statistics on arava and interest-subsidised dwellings account for those dwellings released from tenant income restrictions.

<sup>2</sup> In 2010 Statistics Finland adjusted the tenure status of arava and interest-subsidised dwellings.

<sup>3</sup> Dwellings built using the state's short-term interest subsidy have been classified as "other rented dwellings".

Source: Censuses and Statistics Finland's dwelling statistics.



# 3.3

## Dwellings by size of dwelling (number of rooms) in 2000–2023

|                                    | All dwellings <sup>1</sup> | Number of rooms, excl. kitchen |             |             |             |             |
|------------------------------------|----------------------------|--------------------------------|-------------|-------------|-------------|-------------|
|                                    |                            | 1                              | 2           | 3           | 4           | 5+          |
| <b>Helsinki</b>                    |                            |                                |             |             |             |             |
| 2000                               | 296,013                    | 71,996                         | 108,225     | 63,378      | 33,856      | 16,888      |
| 2005                               | 313,695                    | 74,262                         | 114,330     | 67,671      | 36,798      | 18,558      |
| 2010                               | 328,164                    | 76,349                         | 119,025     | 71,259      | 39,268      | 20,228      |
| 2015                               | 350,314                    | 80,348                         | 127,182     | 77,020      | 42,411      | 21,694      |
| 2020                               | 377 122                    | 86,667                         | 136,195     | 83,476      | 45,865      | 22,805      |
| 2022                               | 387,053                    | 90,068                         | 139,134     | 86,358      | 47,504      | 23,354      |
| 2023                               | 394,373                    | 92,324                         | 141,387     | 88,181      | 48,523      | 23,533      |
| 2000                               | 100                        | 24.3                           | 36.6        | 21.4        | 11.4        | 5.7         |
| 2005                               | 100                        | 23.7                           | 36.4        | 21.6        | 11.7        | 5.9         |
| 2010                               | 100                        | 23.3                           | 36.3        | 21.7        | 12.0        | 6.2         |
| 2015                               | 100                        | 22.9                           | 36.3        | 22.0        | 12.1        | 6.2         |
| 2020                               | 100                        | 23.0                           | 36.1        | 22.1        | 12.2        | 6.0         |
| 2022                               | 100                        | 23.3                           | 36.0        | 22.3        | 12.3        | 6.0         |
| 2023                               | 100                        | 23.4                           | 35.9        | 22.4        | 12.3        | 6.0         |
| <b>2023</b>                        |                            |                                |             |             |             |             |
| Rest of Helsinki Metropolitan Area | 100                        | 15.1                           | 31.0        | 24.8        | 17.3        | 11.7        |
| Helsinki Region                    | 100                        | 18.4                           | 32.4        | 23.2        | 15.5        | 10.4        |
| Tampere                            | 100                        | 25.0                           | 36.5        | 20.5        | 11.3        | 6.5         |
| Turku                              | 100                        | 24.8                           | 36.3        | 21.7        | 10.9        | 6.2         |
| Oulu                               | 100                        | 17.5                           | 31.7        | 21.5        | 15.2        | 14.1        |
| <b>Finland, total</b>              | <b>100</b>                 | <b>16.0</b>                    | <b>30.0</b> | <b>22.1</b> | <b>17.7</b> | <b>14.0</b> |

<sup>1</sup>Incl. dwellings whose number of rooms is unknown.

Source: Censuses and Statistics Finland's dwelling statistics.

# 3.4

## Housing standard by number of rooms 2000–2023

|                                | Dwelling house-holds total | Number of rooms, excl. kitchen |     |     |     |     |     |     |
|--------------------------------|----------------------------|--------------------------------|-----|-----|-----|-----|-----|-----|
|                                |                            | 1                              | 2   | 3   | 4   | 5   | 6   | 7+  |
| <b>Residents per dwelling</b>  |                            |                                |     |     |     |     |     |     |
| 2000                           | 1.9                        | 1.2                            | 1.6 | 2.4 | 2.9 | 3.1 | 3.0 | 3.3 |
| 2005                           | 1.9                        | 1.2                            | 1.5 | 2.3 | 2.9 | 3.0 | 3.0 | 3.3 |
| 2010                           | 1.9                        | 1.2                            | 1.5 | 2.2 | 2.8 | 3.0 | 3.0 | 3.4 |
| 2015                           | 1.9                        | 1.2                            | 1.5 | 2.3 | 2.8 | 3.0 | 3.0 | 3.1 |
| 2020                           | 1.8                        | 1.1                            | 1.5 | 2.2 | 2.8 | 3.0 | 2.9 | 3.0 |
| 2022                           | 1.8                        | 1.1                            | 1.5 | 2.2 | 2.8 | 3.0 | 2.9 | 2.9 |
| 2023                           | 1.8                        | 1.1                            | 1.5 | 2.2 | 2.8 | 3.0 | 2.9 | 3.0 |
| <b>Residents per 100 rooms</b> |                            |                                |     |     |     |     |     |     |
| 2000                           | 79                         | 119                            | 78  | 80  | 74  | 61  | 50  | 43  |
| 2005                           | 76                         | 115                            | 75  | 76  | 72  | 61  | 49  | 43  |
| 2010                           | 76                         | 118                            | 75  | 75  | 71  | 61  | 49  | 44  |
| 2015                           | 76                         | 118                            | 77  | 76  | 71  | 60  | 49  | 45  |
| 2020                           | 75                         | 115                            | 75  | 75  | 70  | 59  | 49  | 40  |
| 2022                           | 74                         | 114                            | 74  | 74  | 70  | 59  | 48  | 39  |
| 2023                           | 75                         | 114                            | 74  | 75  | 70  | 59  | 48  | 39  |

Source: Censuses and Statistics Finland's statistics on dwelling stock.

# 3.5

## Indicators of level of housing in 2000–2023

|                                                       | 2000    | 2005    | 2010    | 2015    | 2020    | 2022    | 2023    |
|-------------------------------------------------------|---------|---------|---------|---------|---------|---------|---------|
| Dwelling stock                                        | 296,013 | 313,695 | 328,164 | 350,314 | 376,065 | 387,053 | 394,373 |
| Dwelling population                                   | 531,287 | 540,094 | 566,040 | 603,965 | 637,971 | 644,668 | 654,854 |
| <b>Average size of dwellings</b>                      |         |         |         |         |         |         |         |
| Rooms per dwelling, kitchen incl.                     |         |         |         |         |         |         |         |
| Floor area per dwelling, m <sup>2</sup>               | 61.8    | 62.3    | 63.0    | 63.3    | 63.1    | 62.9    | 62.7    |
| <b>Housing density</b>                                |         |         |         |         |         |         |         |
| Persons per room, kitchen incl.                       | 62.3    | 63.0    | 63.7    | 63.6    | 63.6    | 63.5    | 63.4    |
| Persons per room, kitchen excl.                       | 0.79    | 0.76    | 0.75    | 0.76    | 0.76    | 0.74    | 0.74    |
| Floor area per person, m <sup>2</sup>                 | 32.6    | 34.0    | 34.2    | 33.9    | 34.4    | 34.6    | 34.5    |
| Persons per dwelling                                  | 1.91    | 1.85    | 1.86    | 1.88    | 1.85    | 1.84    | 1.84    |
| <b>Crowded housing</b>                                |         |         |         |         |         |         |         |
| Norm 4 <sup>1</sup>                                   |         |         |         |         |         |         |         |
| Dwelling households, % <sup>2</sup>                   | 12.4    | 9.8     | 10.3    | 10.8    | 9.9     | 9.4     | 9.5     |
| Persons, % <sup>3</sup>                               | 23.3    | 19.2    | 19.8    | 20.9    | 19.4    | 19.4    | 19.6    |
| <b>Inhabitants in inadequately equipped dwellings</b> |         |         |         |         |         |         |         |
| Persons living in indadequately equipped dwellings    | 13,005  | 13,118  | 18,261  | 16,733  | 14,785  | 13,123  | 12,219  |
| Percentage                                            | 2.4     | 2.4     | 3.2     | 2.8     | 2.3     | 2.0     | 1.9     |

<sup>1</sup> Norm 4: more than 1 person per room, when the kitchen is not reckoned as a room.

Source: Censuses. Statistics Finland's statistics on housing stock and housing conditions.

<sup>2</sup> Proportion of dwelling households.

<sup>3</sup> Proportion of the population living in dwellings.

# 3.6

## Average rent of rented dwellings 2020 and 2023

| Euro/m <sup>2</sup> /month       | Helsinki     |              | Espoo        | Vantaa       | Outer Helsinki Region | Tampere      | Turku        | Finland      |
|----------------------------------|--------------|--------------|--------------|--------------|-----------------------|--------------|--------------|--------------|
|                                  | 2022         | 2023         | 2023         | 2023         | 2023                  | 2023         | 2023         | 2023         |
| <b>All dwellings</b>             | <b>18.74</b> | <b>18.87</b> | <b>17.30</b> | <b>17.45</b> | <b>14.87</b>          | <b>15.60</b> | <b>14.84</b> | <b>14.98</b> |
| <i>Number of rooms</i>           |              |              |              |              |                       |              |              |              |
| 1                                | 24.77        | 24.91        | 22.17        | 22.45        | 18.11                 | 19.20        | 18.44        | 18.74        |
| 2                                | 18.29        | 18.24        | 17.17        | 16.86        | 14.40                 | 14.86        | 14.10        | 14.32        |
| 3+                               | 15.73        | 16.07        | 15.47        | 15.61        | 13.53                 | 13.24        | 12.20        | 13.37        |
| <b>Market-financed dwellings</b> | <b>21.78</b> | <b>22.05</b> | <b>19.23</b> | <b>18.85</b> | <b>15.66</b>          | <b>16.34</b> | <b>15.82</b> | <b>16.28</b> |
| <i>Number of rooms</i>           |              |              |              |              |                       |              |              |              |
| 1                                | 26.83        | 27.07        | 23.84        | 23.93        | 19.18                 | 20.12        | 19.16        | 20.28        |
| 2                                | 20.48        | 20.73        | 18.71        | 18.00        | 14.97                 | 15.29        | 14.74        | 15.29        |
| 3+                               | 18.84        | 19.21        | 17.31        | 16.76        | 14.04                 | 13.86        | 13.15        | 14.39        |
| <b>State-financed dwellings</b>  | <b>13.44</b> | <b>13.77</b> | <b>14</b>    | <b>14.15</b> | <b>13.31</b>          | <b>13.02</b> | <b>12.01</b> | <b>12.47</b> |
| <i>Number of rooms</i>           |              |              |              |              |                       |              |              |              |
| 1                                | 15.98        | 16.35        | 16.98        | 16.44        | 14.77                 | 14.79        | 14.49        | 13.98        |
| 2                                | 13.78        | 14.00        | 14.25        | 14.20        | 13.38                 | 13.19        | 12.25        | 12.41        |
| 3+                               | 12.65        | 12.99        | 13.15        | 13.43        | 12.62                 | 11.78        | 10.56        | 11.94        |
| <b>New rental contracts</b>      |              |              |              |              |                       |              |              |              |
| <b>Market-financed dwellings</b> | <b>22.95</b> | <b>22.88</b> | <b>19.52</b> | <b>19.27</b> | <b>16.06</b>          | <b>17.18</b> | <b>17.28</b> | <b>17.47</b> |
| <i>Number of rooms</i>           |              |              |              |              |                       |              |              |              |
| 1                                | 27.73        | 27.65        | 23.94        | 24.47        | 19.49                 | 20.91        | 20.55        | 21.58        |
| 2                                | 21.34        | 21.38        | 18.7         | 18.01        | 15.32                 | 16.03        | 15.67        | 16.18        |
| 3+                               | 20.01        | 19.96        | 17.77        | 17.01        | 14.75                 | 14.69        | 13.97        | 15.48        |

Source: Statistics Finland's statistics on rents.

## 3.7

## Price index of dwellings in 2023

| Year, quarter   | Helsinki | Espoo and Kauniainen | Vantaa | Outer Helsinki Region | Tampere | Turku | Finland |
|-----------------|----------|----------------------|--------|-----------------------|---------|-------|---------|
| <i>2020=100</i> |          |                      |        |                       |         |       |         |
| 2023            | 97.2     | 99.8                 | 94.5   | 96.5                  | 101.2   | 103.3 | 97.9    |
| <b>2023</b>     |          |                      |        |                       |         |       |         |
| I               | 99.7     | 101.4                | 96.8   | 97.4                  | 102.0   | 105.1 | 99.5    |
| II              | 98.4     | 101.7                | 95.3   | 98.2                  | 101.6   | 104.0 | 99.1    |
| III             | 96.9     | 97.8                 | 93.4   | 94.6                  | 100.5   | 104.4 | 97.1    |
| IV              | 94.1     | 98.5                 | 92.6   | 95.7                  | 100.6   | 99.7  | 95.9    |

Source: Statistics Finland's statistics on rents.

## 3.8

Completed dwellings in Helsinki by type of building in 1985–2023<sup>1</sup>

|                                           | Type of building |                 |                          |                 |        |                      |                          |
|-------------------------------------------|------------------|-----------------|--------------------------|-----------------|--------|----------------------|--------------------------|
|                                           | Total            | Detached houses | Detached terraced houses | Blocks of flats | Others | State financed total | Built by the city, total |
| <b>Dwellings</b>                          |                  |                 |                          |                 |        |                      |                          |
| <i>Annual average</i>                     |                  |                 |                          |                 |        |                      |                          |
| 1985–1989                                 | 4,211            | 656             | 612                      | 2,913           | 29     | 1,695                | 1,328                    |
| 1990–1994                                 | 3,974            | 391             | 272                      | 3,285           | 27     | 2,793                | 1,633                    |
| 1995–1999                                 | 3,457            | 290             | 194                      | 2,961           | 12     | 2,685                | 1,150                    |
| 2000–2004                                 | 3,822            | 369             | 343                      | 3,091           | 18     | 1,783                | 1,012                    |
| 2005–2009                                 | 2,513            | 286             | 154                      | 2,041           | 33     | 664                  | 478                      |
| 2010–2014                                 | 3,671            | 279             | 170                      | 3,206           | 16     | 1,382                | 705                      |
| 2015–2019                                 | 4,583            | 285             | 228                      | 4,024           | 46     | 1,409                | 926                      |
| <i>Annually</i>                           |                  |                 |                          |                 |        |                      |                          |
| 2000                                      | 4,853            | 365             | 440                      | 4,048           | 0      | 2,656                | 1,182                    |
| 2005                                      | 2,698            | 366             | 190                      | 2,003           | 139    | 660                  | 513                      |
| 2010                                      | 2,289            | 278             | 134                      | 1,876           | 1      | 574                  | 306                      |
| 2011                                      | 2,881            | 259             | 233                      | 2,386           | 4      | 899                  | 748                      |
| 2012                                      | 2,451            | 295             | 150                      | 1,988           | 18     | 432                  | 418                      |
| 2013                                      | 2,245            | 230             | 62                       | 1,952           | 1      | 614                  | 403                      |
| 2014                                      | 3,679            | 334             | 254                      | 3,075           | 16     | 1,371                | 1,000                    |
| 2015                                      | 3,718            | 281             | 187                      | 3,247           | 3      | 823                  | 522                      |
| 2016                                      | 3,985            | 256             | 232                      | 3,326           | 171    | 954                  | 482                      |
| 2017                                      | 4,520            | 248             | 171                      | 4,094           | 7      | 1,502                | 838                      |
| 2018                                      | 4,538            | 290             | 290                      | 3,928           | 30     | 1,739                | 1,453                    |
| 2019                                      | 6,156            | 350             | 259                      | 5,526           | 21     | 2,027                | 1,334                    |
| 2020                                      | 6,899            | 356             | 218                      | 6,313           | 12     | 1,630                | 1,466                    |
| 2021                                      | 6,815            | 315             | 150                      | 6,289           | 61     | 1,347                | 928                      |
| 2023                                      | 7,838            | 225             | 172                      | 7,577           | 204    | 2,503                | 2,301                    |
| <b>Housing, floor area, m<sup>2</sup></b> |                  |                 |                          |                 |        |                      |                          |
| <i>Annual average</i>                     |                  |                 |                          |                 |        |                      |                          |
| 1985–1989                                 | 287,477          | 64,596          | 50,347                   | 170,842         | 1,692  | 102,320              | 76,669                   |
| 1990–1994                                 | 270,615          | 41,674          | 22,651                   | 204,233         | 2,057  | 176,917              | 102,637                  |
| 1995–1999                                 | 236,495          | 33,142          | 17,364                   | 185,275         | 715    | 169,026              | 72,776                   |
| 2000–2004                                 | 270,429          | 44,624          | 30,712                   | 194,082         | 1,021  | 111,898              | 68,390                   |
| 2005–2009                                 | 191,168          | 35,796          | 15,351                   | 138,099         | 1,922  | 38,190               | 33,230                   |
| 2010–2014                                 | 248,986          | 35,136          | 15,320                   | 197,363         | 1,144  | 82,771               | 52,241                   |
| 2015–2019                                 | 280,741          | 32,623          | 19,728                   | 225,647         | 2,743  | 79,861               | 59,782                   |
| <i>Annually</i>                           |                  |                 |                          |                 |        |                      |                          |
| 2000                                      | 332,680          | 41,316          | 40,259                   | 251,149         | 0      | 164,736              | 79,177                   |
| 2005                                      | 200,208          | 46,791          | 17,784                   | 127,767         | 7,866  | 34,585               | 32,905                   |
| 2010                                      | 140,330          | 23,387          | 6,304                    | 109,818         | 821    | 67,521               | 26,132                   |
| 2011                                      | 239,687          | 34,955          | 14,076                   | 190,622         | 34     | 47,017               | 30,037                   |
| 2012                                      | 301,813          | 40,157          | 11,907                   | 249,365         | 384    | 81,100               | 54,658                   |
| 2013                                      | 296,490          | 36,006          | 21,079                   | 236,362         | 3,043  | 69,925               | 76,047                   |
| 2014                                      | 266,608          | 41,173          | 23,235                   | 200,764         | 1,436  | 82,791               | 74,333                   |
| 2015                                      | 243,619          | 33,179          | 16,721                   | 193,375         | 344    | 49,985               | 32,684                   |
| 2016                                      | 247,193          | 28,920          | 18,820                   | 190,286         | 9,167  | 61,541               | 35,613                   |
| 2017                                      | 273,537          | 29,019          | 14,559                   | 227,728         | 2,231  | 85,069               | 57,485                   |
| 2018                                      | 274,454          | 32,733          | 25,814                   | 215,019         | 888    | 98,664               | 92,229                   |
| 2019                                      | 364,900          | 39,265          | 22,724                   | 301,826         | 1,085  | 110,657              | 80,900                   |
| 2020                                      | 400,176          | 40,254          | 18,228                   | 338,124         | 3,570  | 91,682               | 90,943                   |
| 2021                                      | 370,322          | 35,374          | 11,545                   | 320,850         | 2,553  | 70,425               | 54,203                   |
| 2023                                      | 451,267          | 25,248          | 15,277                   | 3,085           | 7,658  | 136,022              | ..                       |

<sup>1</sup>New dwellings and extensions, not changes in the purpose of use.  
Source: City of Helsinki Executive Office.

## 3.9

## Completed dwellings in Helsinki by type of dwelling in 2000–2023

|                                                  | Dwellings total | 1 room | 2 rooms | 3 rooms | 4 rooms | 5 rooms | 6 rooms | Average size, m <sup>2</sup> |
|--------------------------------------------------|-----------------|--------|---------|---------|---------|---------|---------|------------------------------|
| <b>New dwellings and extensions to dwellings</b> |                 |        |         |         |         |         |         |                              |
| 2000                                             | 4,853           | 629    | 1,875   | 1,170   | 856     | 280     | 43      | 68.2                         |
| 2005                                             | 2,697           | 344    | 966     | 632     | 510     | 180     | 65      | 74.2                         |
| 2006                                             | 2,289           | 367    | 832     | 492     | 406     | 141     | 51      | 71.4                         |
| 2007                                             | 2,881           | 520    | 804     | 734     | 575     | 184     | 64      | 74.8                         |
| 2008                                             | 2,451           | 202    | 842     | 712     | 502     | 129     | 64      | 81.0                         |
| 2009                                             | 2,245           | 202    | 688     | 679     | 446     | 162     | 68      | 79.4                         |
| 2010                                             | 2,059           | 411    | 747     | 500     | 246     | 122     | 33      | 68.2                         |
| 2011                                             | 3,656           | 580    | 1,495   | 922     | 447     | 158     | 54      | 65.7                         |
| 2012                                             | 4,643           | 885    | 1,796   | 1,183   | 540     | 165     | 74      | 65.0                         |
| 2013                                             | 4,320           | 681    | 1,587   | 1,142   | 668     | 197     | 45      | 68.6                         |
| 2014                                             | 3,679           | 592    | 1,129   | 1,014   | 672     | 224     | 48      | 72.5                         |
| 2015                                             | 3,718           | 655    | 1,421   | 997     | 454     | 149     | 42      | 65.5                         |
| 2016                                             | 3,985           | 833    | 1,360   | 987     | 615     | 152     | 38      | 62.0                         |
| 2017                                             | 4,520           | 816    | 1,943   | 1,071   | 525     | 122     | 43      | 60.5                         |
| 2018                                             | 4,538           | 1,015  | 1,569   | 1,064   | 634     | 227     | 29      | 60.5                         |
| 2019                                             | 6,156           | 1,551  | 1,958   | 1,591   | 818     | 207     | 31      | 59.3                         |
| 2020                                             | 6,899           | 1,813  | 2,211   | 1,654   | 919     | 254     | 48      | 58.0                         |
| 2021                                             | 6,815           | 2,090  | 2,120   | 1,598   | 791     | 187     | 29      | 54.3                         |
| 2022                                             | 5,534           | 1,677  | 1,571   | 1,264   | 786     | 208     | 28      | 55.7                         |
| 2023                                             | 7,838           | 2,425  | 2,176   | 1,966   | 1,021   | 221     | 29      | 55.2                         |
| <b>Changed principal use</b>                     |                 |        |         |         |         |         |         |                              |
| 2000                                             | 245             | 37     | 144     | 38      | 23      | 1       | 2       | 61.2                         |
| 2005                                             | 156             | 67     | 57      | 13      | 7       | 9       | 3       | 59.8                         |
| 2006                                             | 208             | 44     | 91      | 34      | 25      | 12      | 2       | 73.3                         |
| 2007                                             | 427             | 128    | 169     | 81      | 36      | 9       | 4       | 68.4                         |
| 2008                                             | 336             | 94     | 104     | 79      | 28      | 22      | 9       | 81.4                         |
| 2009                                             | 267             | 82     | 68      | 60      | 33      | 14      | 10      | 87.9                         |
| 2010                                             | 202             | 58     | 70      | 37      | 23      | 5       | 9       | 79.5                         |
| 2011                                             | 426             | 114    | 195     | 78      | 29      | 5       | 5       | 62.0                         |
| 2012                                             | 532             | 188    | 211     | 82      | 35      | 13      | 3       | 56.7                         |
| 2013                                             | 236             | 72     | 108     | 33      | 14      | 4       | 5       | 60.4                         |
| 2014                                             | 306             | 122    | 105     | 49      | 23      | 5       | 2       | 62.1                         |
| 2015                                             | 341             | 120    | 130     | 54      | 18      | 17      | 2       | 64.0                         |
| 2016                                             | 410             | 164    | 138     | 63      | 20      | 12      | 13      | 60.9                         |
| 2017                                             | 370             | 188    | 114     | 43      | 18      | 2       | 5       | 53.6                         |
| 2018                                             | 263             | 140    | 75      | 21      | 19      | 5       | 3       | 51.8                         |
| 2019                                             | 580             | 285    | 184     | 74      | 19      | 13      | 5       | 52.4                         |
| 2020                                             | 381             | 141    | 101     | 94      | 31      | 6       | 8       | 58.2                         |
| 2021                                             | 290             | 80     | 132     | 47      | 15      | 2       | 14      | 75.6                         |
| 2022                                             | 513             | 104    | 230     | 93      | 76      | 7       | 9       | 69.5                         |
| 2023                                             | 341             | 98     | 148     | 54      | 32      | 5       | 4       | ..                           |

Source: City of Helsinki Executive Office.

# Transport and Tourism

## List of diagrams and tables

|     |                                                                                                                                          |    |
|-----|------------------------------------------------------------------------------------------------------------------------------------------|----|
| 4.1 | Public transport in Helsinki 2010–2023 .....                                                                                             | 30 |
| 4.2 | Motor vehicles registered in Helsinki on 31 Dec. 1995–2023.....                                                                          | 30 |
| 4.3 | Road traffic accidents reported to the police: Helsinki 1995–2023, Espoo,<br>Vantaa, Tampere, Turku, Oulu and Finland overall 2023 ..... | 31 |
| 4.4 | Hotels and overnight stays in Helsinki 2000–2023 .....                                                                                   | 31 |
| 4.5 | Driving licences 1995–2023 .....                                                                                                         | 32 |

## 4.1

## Public transport in Helsinki 2010–2023

|                                                                                                                            | 2010      | 2015      | 2020      | 2022      | 2023      |
|----------------------------------------------------------------------------------------------------------------------------|-----------|-----------|-----------|-----------|-----------|
| <b>Helsinki City Transport</b>                                                                                             |           |           |           |           |           |
| Trams                                                                                                                      | 93        | 91        | 122       | 125       | 137       |
| Metro coaches <sup>1</sup>                                                                                                 | 90        | 90        | 45        | 50        | 50        |
| <i>Seat kilometres, 1,000</i>                                                                                              |           |           |           |           |           |
| Trams                                                                                                                      | 540,000   | 594,800   | 751,300   | 691,000   | 703,000   |
| Metro                                                                                                                      | 2,038,000 | 2,165,500 | 3,430,200 | 3,136,000 | 3,565,000 |
| <i>Trips 1,000</i>                                                                                                         |           |           |           |           |           |
| Trams                                                                                                                      | 54,496    | 55,230    | 34,900    | 41,800    | 44,200    |
| Metro                                                                                                                      | 57,091    | 62,128    | 60,400    | 69,900    | 79,000    |
| <i>Trips on average per service day</i>                                                                                    |           |           |           |           |           |
| Trams                                                                                                                      | 151,378   | 153,417   | 95,616    | 114,520   | 121,095   |
| Metro                                                                                                                      | 158,586   | 172,578   | 165,479   | 191,596   | 216,438   |
| <b>Tendered bus services provided for Helsinki Regional Transport Authority HSL (Services within Helsinki)<sup>2</sup></b> |           |           |           |           |           |
| Trips                                                                                                                      | 86,200    | 84,987    | 45,400    | 53,183    | 62,713    |

1 The concept of "metro train unit" has changed with the introduction of new metro trains. The new trains form a single integrated space.

2 Buses in service on average during rush hour peak in December.

Source: Helsinki Regional Transport Authority HSL.

## 4.2

## Motor vehicles registered in Helsinki on 31 Dec. 1995–2023

|                              | 1995           | 2000           | 2005           | 2010           | 2015           | 2020           | 2022           | 2023           |
|------------------------------|----------------|----------------|----------------|----------------|----------------|----------------|----------------|----------------|
| Cars                         | 157,544        | 186,452        | 204,589        | 232,515        | 253,528        | 276,910        | 285,052        | 287,646        |
| of which in professional use | 1,214          | 1,080          | 1,051          | 1,167          | 1,105          | 1,926          | 2,113          | 2,272          |
| Lorries/trucks               | 3,429          | 5,100          | 5,893          | 7,380          | 9,350          | 10,177         | 10,430         | 10,837         |
| Vans                         | 14,974         | 16,957         | 19,557         | 24,303         | 30,915         | 35,855         | 37,210         | 37,909         |
| Buses                        | 930            | 1,626          | 1,458          | 1,583          | 1,650          | 2,140          | 2,531          | 2,544          |
| Special cars                 | 1,388          | 998            | 643            | 510            | 484            | 465            | 462            | 455            |
| <b>Vehicles total</b>        | <b>178,265</b> | <b>211,133</b> | <b>232,140</b> | <b>266,291</b> | <b>295,927</b> | <b>325,547</b> | <b>335,685</b> | <b>341,663</b> |
| per 1,000 inhabitants        | 340            | 380            | 414            | 452            | 471            | 498            | 510            | 515            |
| of which                     |                |                |                |                |                |                |                |                |
| cars                         | 300            | 336            | 365            | 395            | 404            | 404            | 433            | 433            |
| Motor cycles                 | 5,534          | 7,650          | 11,224         | 15,216         | 16,994         | 18,359         | 18,909         | 19,029         |
| <b>Motor vehicles total</b>  | <b>183,799</b> | <b>218,783</b> | <b>243,364</b> | <b>281,507</b> | <b>312,921</b> | <b>434,906</b> | <b>354,954</b> | <b>361,640</b> |

Source: Statistics Finland.

## 4.3

### Road traffic accidents reported to the police: Helsinki 1995–2023, Espoo, Vantaa, Tampere, Turku, Oulu and Finland overall 2023

|                       | Accidents leading to casualties |                       | Victims    |              |              |                       |
|-----------------------|---------------------------------|-----------------------|------------|--------------|--------------|-----------------------|
|                       | Total                           | Per 1,000 inhabitants | Killed     | Injured      | Total        | Per 1,000 inhabitants |
| Helsinki              |                                 |                       |            |              |              |                       |
| 1995                  | 812                             | 1.5                   | 7          | 987          | 994          | 1.9                   |
| 2000                  | 703                             | 1.3                   | 16         | 867          | 883          | 1.5                   |
| 2005                  | 552                             | 1.0                   | 9          | 721          | 730          | 1.3                   |
| 2010                  | 545                             | 0.9                   | 5          | 669          | 674          | 1.1                   |
| 2015                  | 383                             | 0.6                   | 12         | 443          | 455          | 0.7                   |
| 2020                  | 202                             | 0                     | 8          | 352          | 360          | 1                     |
| 2022                  | 242                             | 0                     | 5          | 295          | 300          | 1                     |
| 2023                  | 277                             | 0                     | 6          | 327          | 333          | 1                     |
| Espoo                 | 100                             | 0                     | 2          | 142          | 144          | 1                     |
| Vantaa                | 99                              | 0                     | 5          | 125          | 130          | 1                     |
| Tampere               | 78                              | 0                     | 1          | 91           | 92           | 0                     |
| Turku                 | 96                              | 1                     | 3          | 114          | 117          | 1                     |
| Oulu                  | 86                              | 0                     | 2          | 107          | 109          | 1                     |
| <b>Finland, total</b> | <b>2,927</b>                    | <b>1</b>              | <b>183</b> | <b>3,626</b> | <b>3,809</b> | <b>1</b>              |

Source: Liikenneturva. Statistics Finland. Transport and tourism. Road traffic accidents.

## 4.4

### Hotels and overnight stays in Helsinki 2000–2023

|                                                                       | 2000      | 2010      | 2015      | 2020      | 2023      |
|-----------------------------------------------------------------------|-----------|-----------|-----------|-----------|-----------|
| Accommodation establishments on 1 Jan.                                | 60        | 63        | 60        | 76        | 83        |
| of which hotels                                                       | 47        | 55        | 54        | 67        | 75        |
| Rooms                                                                 | 7,577     | 8,843     | 9,292     | 12,150    | 13,557    |
| Beds                                                                  | 14,580    | 17,605    | 17,993    | 24,128    | 26,462    |
| Helsinki's proportion of the capacity of accommodation establishments | 10        | 11        | 11        | 14        | 15        |
| of the hotel capacity, % <sup>1</sup>                                 | 12        | 14        | 15        | 18        | 20        |
| Clients                                                               | 1,430,256 | 1,821,799 | 2,065,596 | 916,901   | 2,420,612 |
| Rooms                                                                 | 7,262     | 8,650     | 9,192     | 11,722    | 13,557    |
| Beds                                                                  | 13,758    | 16,922    | 17,492    | 22,766    | 26,462    |
| Utilisation, rate                                                     |           |           |           |           |           |
| percentage of room capacity                                           | 68        | 67        | 70        | 35        | 57        |
| Overnight stays, total                                                | 2,604,647 | 3,187,136 | 3,461,958 | 1,616,635 | 3,949,625 |
| of which                                                              |           |           |           |           |           |
| foreign nationals, %                                                  | 58.0      | 53.6      | 53.2      | 30.6      | 45.2      |

<sup>1</sup> Number of beds.  
Source: Statistics Finland.



## 4.5

## Driving licences 1995–2023

|                               | 1995    | 2000    | 2005    | 2010    | 2015    | 2020    | 2023    |
|-------------------------------|---------|---------|---------|---------|---------|---------|---------|
| Valid driving licences, total | 288,703 | 321,597 | 335,758 | 358,572 | 373,505 | 390,882 | 394,416 |
| Men                           | 156,773 | 172,287 | 178,100 | 188,214 | 194,685 | 202,804 | 204,230 |
| Women                         | 131,930 | 149,310 | 157,658 | 170,358 | 178,820 | 188,078 | 190,186 |
| % of Finnish driving licenses | 9.8     | 10.2    | 10.4    | 10.0    | 10.1    | 10.4    | 10.4    |

Source: Traficom.

# Health care

## List of diagrams and tables

|     |                                                                                                                  |    |
|-----|------------------------------------------------------------------------------------------------------------------|----|
| 5.1 | Non-hospital health care services provided by Helsinki City (including outsourced services) 2010–2023 .....      | 34 |
| 5.2 | Helsinki residents having received reimbursements of the fees charged by doctors practising privately 2023 ..... | 35 |
| 5.3 | Use of private-sector health care services reimbursed by the National Health Insurance 2005–2023.....            | 35 |
| 5.4 | National disability pensions by main group of disease 31 Dec. 2022 .....                                         | 36 |
| 5.5 | Deaths by cause of death (54-class) in 2022.....                                                                 | 37 |

|                                                                               | 2010             | 2015             | 2020             | 2023             |
|-------------------------------------------------------------------------------|------------------|------------------|------------------|------------------|
| <b>Helsinki residents having received outpatient health care</b>              |                  |                  |                  |                  |
| <b>Total</b>                                                                  | <b>436,492</b>   | <b>456,991</b>   | <b>512,508</b>   | <b>..</b>        |
| Primary health care                                                           | 405,930          | 423,524          | 474,335          | 478,079          |
| Outpatient medical care                                                       | 293,590          | 299,342          | 374,550          | 356,246          |
| Public health centre emergency clinics                                        | 76,530           | 74,742           | 0                | 60,736           |
| Maternity and child health clinics                                            | 51,929           | 64,569           | 69,509           | 57,120           |
| Home care                                                                     | 17,043           | 17,865           | 15,692           | 13,405           |
| Oral,health                                                                   | 154,534          | 179,956          | 140,287          | 168,276          |
| Other primary health care                                                     | 92,897           | 117,164          | 158,978          | 115,743          |
| Specialised medical care                                                      | 184,130          | 205,968          | 257,200          | 232,317          |
| Specialised somatic medical care                                              | 173,251          | 190,775          | 239,122          | 203,667          |
| Specialised psychiatric medical care                                          | 20,420           | 28,762           | 36,771           | 34,390           |
| <b>Helsinki residents' outpatient consultations and treatment visits</b>      |                  |                  |                  |                  |
| <b>Total</b>                                                                  | <b>5,099,551</b> | <b>6,902,146</b> | <b>7,479,807</b> | <b>7,903,645</b> |
| Primary health care                                                           | 4,245,486        | 5,780,001        | 6,150,493        | 6,715,100        |
| Outpatient medical care                                                       | 1,146,772        | 1,501,233        | 1,812,706        | 2,182,909        |
| Public health centre emergency clinics                                        | 119,481          | 124,671          | 0                | 82,126           |
| Maternity and child health clinics                                            | 230,589          | 328,996          | 348,819          | 313,550          |
| Home,care                                                                     | 2,042,287        | 2,846,122        | 3,131,335        | 3,677,422        |
| Oral health                                                                   | 448,828          | 513,162          | 333,497          | 458,961          |
| Other primary health care                                                     | 257,529          | 466,123          | 524,136          | 132              |
| Specialised medical care                                                      | 854,065          | 1,122,145        | 1,329,314        | 1,188,545        |
| Specialised somatic medical care                                              | 625,180          | 781,047          | 920,977          | 841,340          |
| Specialised psychiatric medical care                                          | 228,885          | 341,098          | 408,337          | 347,205          |
| <b>Non-resident.outpatient consultations and treatment visits in Helsinki</b> |                  |                  |                  |                  |
| <b>Total</b>                                                                  | <b>54,546</b>    | <b>79,791</b>    | <b>88,408</b>    | <b>127,856</b>   |
| Primary health care                                                           | 51,170           | 73,117           | 78,168           | 100,753          |
| Outpatient medical care                                                       | 7,383            | 14,521           | 31,990           | 47,596           |
| Public health centre emergency clinics                                        | 7,372            | 9,511            | 0                | 333              |
| Maternity and child health clinics                                            | 1,220            | 3,980            | 5,959            | 30,860           |
| Home care                                                                     | 1,075            | 1,634            | 1,691            | 8,628            |
| Oral health                                                                   | 12,523           | 17,267           | 10,125           | 11,646           |
| Other primary health care                                                     | 21,597           | 26,209           | 28,403           | 1,690            |
| Specialised medical care                                                      | 3,376            | 6,674            | 10,240           | 27,103           |
| Specialised somatic medical care                                              | 1,747            | 3,152            | 3,574            | 5,615            |
| Specialised psychiatric medical care                                          | 1,629            | 3,522            | 6,666            | 21,488           |

Source: Social Services and Health Care Sector.

## 5.2

### Helsinki residents having received reimbursements of the fees charged by doctors practising privately 2023

| Age          | Private GPs or specialists |                     | Private dental care |                     |
|--------------|----------------------------|---------------------|---------------------|---------------------|
|              | Persons                    | % of the population | Persons             | % of the population |
| 0–14         | 29,608                     | 31.3                | 1,652               | 1.7                 |
| 15–24        | 19,173                     | 26.6                | 3,476               | 4.8                 |
| 25–44        | 50,321                     | 22.3                | 31,855              | 14.1                |
| 45–64        | 46,336                     | 30.0                | 45,084              | 29.1                |
| 65+          | 52,478                     | 44.8                | 49,172              | 42.0                |
| <b>Total</b> | <b>197,916</b>             | <b>29.8</b>         | <b>131,239</b>      | <b>19.8</b>         |

Source: Kela – The Social Insurance Institution of Finland. Kelasto reports.

## 5.3

### Use of private-sector health care services reimbursed by the National Health Insurance 2005–2023

|                                         | 2010    | 2015    | 2020    | 2022    | 2023    |
|-----------------------------------------|---------|---------|---------|---------|---------|
| Population <sup>1</sup>                 | 588,549 | 628,208 | 656,920 | 664,028 | 664,028 |
| <b>Doctors' fees</b>                    |         |         |         |         |         |
| Number of visits, 1,000                 | 557     | 543     | 466     | 548     | 525     |
| Reimbursements, 1,000 euro <sup>2</sup> | 20,557  | 15,848  | 10,063  | 9,788   | 5,023   |
| per inhabitant, euro <sup>2</sup>       | 34.93   | 25.23   | 15.32   | 14.74   | 7.70    |
| per visit, euro <sup>2</sup>            | 36.91   | 29.19   | 21.60   | 17.86   | 9.57    |
| <b>Dentists' fees</b>                   |         |         |         |         |         |
| Number of visits, 1,000                 | 357     | 337     | 285     | 305     | 287     |
| Reimbursements, 1,000 euro <sup>2</sup> | 33,158  | 17,885  | 7,853   | 6,928   | 6,096   |
| per inhabitant, euro <sup>2</sup>       | 56.34   | 28.47   | 11.96   | 10.43   | 9.18    |
| per visit, euro <sup>2</sup>            | 93.01   | 53.07   | 27.54   | 22.72   | 21.24   |
| <b>Examination and treatment</b>        |         |         |         |         |         |
| Decuctible visits, 1,000                | 240     | 443     | 364     | 465     | 116     |
| Reimbursements, 1,000 euro <sup>2</sup> | 20,846  | 14,535  | 8,090   | 14,365  | 1,469   |
| per inhabitant, euro <sup>2</sup>       | 35.42   | 23.14   | 12.31   | 21.63   | 2.21    |
| per visit, euro <sup>2</sup>            | 86.86   | 32.81   | 22.22   | 30.90   | 12.66   |
| <b>Travel</b>                           |         |         |         |         |         |
| Single journeys, 1,000                  | 329     | 347     | 245     | 245     | 243     |
| Reimbursements, 1,000 euro <sup>2</sup> | 26,561  | 23,985  | 17,006  | 14,282  | 13,851  |
| per inhabitant, euro <sup>2</sup>       | 45.13   | 38.18   | 25.89   | 21.51   | 20.86   |
| per visit, euro <sup>2</sup>            | 80.73   | 69.12   | 69.41   | 58.30   | 57.00   |

<sup>1</sup> Population at year-end from Kela – the Social Insurance Institution of Finland's database.

<sup>2</sup> Based on rates in 2023.

Source: Kela – The Social Insurance Institution of Finland.

# 5.4

## National disability pensions by main group of disease 31 Dec. 2022

|                                       |                                                                                              | Helsinki                       |            | Finland                        |            |
|---------------------------------------|----------------------------------------------------------------------------------------------|--------------------------------|------------|--------------------------------|------------|
|                                       |                                                                                              | <i>All disability pensions</i> |            | <i>All disability pensions</i> |            |
|                                       |                                                                                              | <i>Number</i>                  | <i>%</i>   | <i>Number</i>                  | <i>%</i>   |
| <b>Main disease groups altogether</b> |                                                                                              | <b>14,956</b>                  | <b>100</b> | <b>180,819</b>                 | <b>100</b> |
| I                                     | Infectious or parasitic diseases                                                             | 53                             | 0.4        | 276                            | 0.2        |
| II                                    | Tumours                                                                                      | 392                            | 2.6        | 4,810                          | 2.7        |
| IV                                    | Diseases of internal secretion, nutrition or metabolism                                      | 189                            | 1.3        | 2,325                          | 1.3        |
| V                                     | Disorders of mental health and behavior                                                      | 9,358                          | 62.6       | 98,787                         | 54.6       |
| VI                                    | Diseases of the nervous system                                                               | 1,239                          | 8.3        | 15,960                         | 8.8        |
| VII                                   | Diseases of the eye and its surrounding structures                                           | 188                            | 1.3        | 1,834                          | 1.0        |
| IX                                    | Diseases of the cardio-vascular system                                                       | 680                            | 4.5        | 8,424                          | 4.7        |
| X                                     | Diseases of the respiratory system                                                           | 97                             | 0.6        | 1,382                          | 0.8        |
| XI                                    | Diseases of the gastro-intestinal system                                                     | 66                             | 0.4        | 1,032                          | 0.6        |
| XIII                                  | Diseases of, the musculo-skeletal and articular systems                                      | 1,504                          | 10.1       | 31,326                         | 17.3       |
| XVII                                  | Congenital malformations, chromosome abnormalities, etc.                                     | 393                            | 2.6        | 4,764                          | 2.6        |
| XIX                                   | Injuries, poisonings or consequences of certain other external impacts and articular systems | 601                            | 4.0        | 7,170                          | 4.0        |
|                                       | Others                                                                                       | 196                            | 1.3        | 2,729                          | 1.5        |

Source: Joint statistics of Kela – The Social Insurance Institution of Finland – and the Finnish Centre for Pensions.

# 5.5

## Deaths by cause of death<sup>1</sup> (54-class) in 2022

|                                                           | Persons deceased |             | Per 10,000 inhabitants |              |
|-----------------------------------------------------------|------------------|-------------|------------------------|--------------|
|                                                           | Total            | Men %       | Total                  |              |
|                                                           |                  |             | Helsinki               | Finland      |
| <b>Total</b>                                              | <b>5,906</b>     | <b>46.8</b> | <b>89.3</b>            | <b>113.7</b> |
| Infectious or parasitic diseases                          | 435              | 52.0        | 6.6                    | 8.3          |
| Tumours                                                   | 1,283            | 49.4        | 19.4                   | 24.3         |
| Diseases of internal secretion. nutrition or metabolism   | 95               | 54.7        | 1.4                    | 1.8          |
| Dementia, Alzheimer's disease                             | 1,169            | 30.0        | 17.7                   | 22.2         |
| Other diseases of the nervous and sensory system          | 209              | 47.4        | 3.2                    | 4.2          |
| Diseases of the cardio-vascular system <sup>2</sup>       | 1,632            | 47.0        | 24.7                   | 35.1         |
| Diseases of the respiratory system                        | 218              | 59.2        | 3.3                    | 3.5          |
| Diseases of the gastro-intestinal system <sup>2</sup>     | 97               | 41.2        | 1.5                    | 2.5          |
| Urological and venereal diseases                          | 6                | 33.3        | 0.1                    | 0.3          |
| Congenital malformations. chromosome abnormalities        | 14               | 57.1        | 0.2                    | 0.4          |
| Other diseases <sup>2</sup>                               | 82               | 54.9        | 1.2                    | 1.3          |
| Unknown or ill-defined causes of death                    | 81               | 55.6        | 1.2                    | 0.5          |
| Alcohol-related diseases and accidental alcohol poisoning | 218              | 70.6        | 3.3                    | 3.0          |
| Accidents and violence <sup>2</sup>                       | 302              | 59.6        | 4.6                    | 5.7          |
| No death certificate                                      | 65               | 50.8        | 1.0                    | 0.8          |

<sup>1</sup> ICD-10 classification of causes of death.

<sup>2</sup> Except alcohol-related.

Source: Statistics Finland.

# Social welfare

## List of diagrams and tables

|     |                                                                                |    |
|-----|--------------------------------------------------------------------------------|----|
| 6.1 | Child welfare 1995–2023.....                                                   | 39 |
| 6.2 | Benefits for families with children 2005–2023.....                             | 39 |
| 6.3 | Pensioners in the Helsinki Region, Tampere, Turku, Oulu and Finland 2023 ..... | 40 |
| 6.4 | Recipients of pensions in Helsinki on 31 Dec. 2000–2023.....                   | 40 |



## 6.1

## Child welfare 1995–2023

|                                                                                                | 1995         | 2000         | 2005         | 2010          | 2015          | 2020         | 2023  |
|------------------------------------------------------------------------------------------------|--------------|--------------|--------------|---------------|---------------|--------------|-------|
| <b>Child welfare clients during the year</b>                                                   | <b>5,577</b> | <b>7,278</b> | <b>7,734</b> | <b>10,022</b> | <b>19,125</b> | <b>6,601</b> | ..    |
| of whom                                                                                        |              |              |              |               |               |              |       |
| Receiving community care                                                                       | 4,578        | 6,276        | 6,969        | 9,356         | 18,085        | 5,574        | 4,057 |
| Placements                                                                                     | 1,917        | 2,326        | 2,431        | 2,474         | 2,084         | 2,106        | 1,874 |
| Placed with an emergency care order and taken into care                                        | 1,296        | 1,603        | 1,909        | 1,923         | 1,777         | 1,775        | 1,722 |
| of whom placed with an emergency care order                                                    | 179          | 222          | 329          | 435           | 432           | 599          | 580   |
| In residential care                                                                            | ..           | 1,337        | 1,478        | 1,511         | 972           | 1,031        | 914   |
| In foster care                                                                                 | ..           | 1,041        | 999          | 1,101         | 1,052         | 1,096        | 713   |
| In professional family homes                                                                   | ..           | 116          | 87           | 117           | 159           | 193          | 133   |
| <b>Children aged 0–17 in child welfare services, as % of total population of same age</b>      | <b>5.1</b>   | <b>6.4</b>   | <b>6.9</b>   | <b>8.3</b>    | <b>17.5</b>   | <b>5.1</b>   | ..    |
| Receiving community care                                                                       | 4.1          | 5.5          | 6.1          | 8.3           | 16.5          | 4.2          | 3.6   |
| Placed                                                                                         | 1.8          | 2.1          | 2.2          | 2.2           | 1.8           | 1.7          | 1.6   |
| Placed with an emergency care order and taken into care                                        | 1.3          | 1.5          | 1.8          | 1.8           | 1.5           | 1.5          | 1.4   |
| <b>Young people aged 18–20 in child welfare services, as % of total population of same age</b> | <b>3.8</b>   | <b>5.0</b>   | <b>5.8</b>   | <b>6.2</b>    | <b>7.0</b>    | <b>3.7</b>   | ..    |
| Receiving community care                                                                       | 3.5          | 4.2          | 5.5          | 6.2           | 7.0           | 2.5          | ..    |
| Placed                                                                                         | 1.1          | 1.4          | 1.6          | 1.6           | 1.4           | 0.9          | ..    |
| Placed with an emergency care order and taken into care                                        | 0.5          | 0.8          | 1.0          | 0.8           | 1.0           | 0.6          | ..    |

<sup>1</sup>Since a new social care act came into effect on 1 April 2015, child protection clients have decreased.

Source: Social Services and Health Care Division.

## 6.2

## Benefits for families with children 2005–2023

|                                                                     | 2005          | 2010          | 2015           | 2020           | 2023           |
|---------------------------------------------------------------------|---------------|---------------|----------------|----------------|----------------|
| <b>Child benefits</b>                                               |               |               |                |                |                |
| <b>Families receiving child benefits</b>                            | <b>52,950</b> | <b>56,955</b> | <b>60,834</b>  | <b>64,320</b>  | <b>66,110</b>  |
| <i>Number of children in family</i>                                 |               |               |                |                |                |
| 1                                                                   | 26,831        | 29,250        | 30,691         | 31,134         | 32,272         |
| 2                                                                   | 19,185        | 20,421        | 22,341         | 24,838         | 25,524         |
| 3                                                                   | 5,391         | 5,574         | 5,910          | 6,250          | 6,144          |
| 4                                                                   | 1,046         | 1,094         | 1,280          | 1,471          | 1,538          |
| 5–                                                                  | 497           | 616           | 612            | 624            | 409            |
| <b>Children conferring entitlement to child benefit<sup>1</sup></b> | <b>88,362</b> | <b>94,167</b> | <b>101,104</b> | <b>108,355</b> | <b>110,849</b> |
| Child benefits paid €1,000                                          | 123,401       | 1,174         | 2129,919       | 143,160        | 148,012        |
| <b>Recipients (families) of maternity grants</b>                    | <b>5,879</b>  | <b>6,726</b>  | <b>6,990</b>   | <b>6,935</b>   | <b>5,924</b>   |
| Total value of maternity grants, 1,000 euro <sup>3</sup>            | 1,137         | 1,174         | 1,239          | 1,524          | 1,312          |
| of which value of maternity pack                                    | 773           | 853           | 925            | 1,099          | 913            |

<sup>1</sup> Including children in institutions.

<sup>2</sup> Due to a change in the legislation on child benefit, the amount of the benefit decreased by 8.1% as of January 2015.

<sup>3</sup> Nominal value.

Source: Kela – The Social Insurance Institution of Finland. Kelasto reports.



## 6.3

## Pensioners in the Helsinki Region, Tampere, Turku, Oulu and Finland 2023

|                            | All pension recipients | Old-age pension  | Disability pension | Survivors' pension |
|----------------------------|------------------------|------------------|--------------------|--------------------|
| <i>Total</i>               |                        |                  |                    |                    |
| Helsinki Metropolitan area | 248,931                | 218,198          | 25,687             | 30,439             |
| Rest of Helsinki Region    | 80,903                 | 72,543           | 8,602              | 10,984             |
| Helsinki Region            | 324,142                | 290,741          | 34,289             | 41,423             |
| Tampere                    | 58,614                 | 51,220           | 7,630              | 7,735              |
| Turku                      | 49,415                 | 43,522           | 6,057              | 6,808              |
| Oulu                       | 47,368                 | 40,021           | 7,577              | 6,072              |
| <b>Finland, total</b>      | <b>1,616,676</b>       | <b>1,442,871</b> | <b>179,731</b>     | <b>229,836</b>     |

Source: Finnish Centre for Pensions

## 6.4

## Recipients of pensions in Helsinki on 31 Dec. 2000–2023

|                                                                            | 2000           | 2005           | 2010           | 2015           | 2020           | 2023           |
|----------------------------------------------------------------------------|----------------|----------------|----------------|----------------|----------------|----------------|
| <b>Recipients of pensions in their own right</b>                           | <b>108,311</b> | <b>111,622</b> | <b>120,447</b> | <b>128,302</b> | <b>138,854</b> | <b>138,642</b> |
| of which                                                                   |                |                |                |                |                |                |
| Recipients on statutory earnings-related pension                           | 99,842         | 105,303        | 114,034        | 121,207        | 130,962        | 130,836        |
| Recipients of national pension <sup>1</sup>                                | 88,415         | 52,713         | 38,148         | 36,389         | 37,793         | 34,158         |
| Old-age pension                                                            | 80,210         | 82,676         | 95,301         | 109,457        | 117,680        | 124,318        |
| Disability pension                                                         | 22,375         | 21,897         | 21,355         | 18,269         | 10,606         | 14,698         |
| Unemployment pension                                                       | 3,977          | 3,634          | 1,907          | –              | –              | –              |
| Part-time pension                                                          | 3,231          | 4,039          | 2,940          | 1,223          | 63             | –              |
| <b>Percentage of residents having received pensions in their own right</b> |                |                |                |                |                |                |
| <b>All recipients, aged 16 or older</b>                                    | <b>23.2</b>    | <b>23.5</b>    | <b>23.9</b>    | <b>24.0</b>    | <b>24.3</b>    | 24.1           |
| Aged 55–64, including part-time pensions                                   | 42.1           | 36.6           | 34.2           | 25.0           | 24.0           | 24.1           |
| Aged 55–64, without part-time pensions                                     | 36.6           | 31.0           | 30.4           | 23.5           | 24.0           | 24.1           |
| Recipients of old-age pensions, % of aged 16 or older                      | 17.2           | 17.4           | 18.9           | 20.5           | 21.5           | 21.6           |
| Recipients of disability pensions, % of aged 16–64                         | 5.7            | 5.5            | 5.1            | 4.2            | 3.6            | 3.2            |
| Average pension in one's own right 31.12. euros/month                      | 1,225          | 1,454          | 1,704          | 2,008          | 2,060          | 2,392          |
| <b>Other, national old agedisability and unemployment pension benefits</b> |                |                |                |                |                |                |
| Child increase                                                             | –              | –              | 877            | 874            | 715            | 1,017          |
| Front-veteran's supplement                                                 | –              | –              | 4,834          | 2,045          | 583            | 208            |
| <b>Recipients of survivors' pensions</b>                                   |                |                |                |                |                |                |
| Surviving spouses                                                          | 22,225         | 21,720         | 20,631         | 19,234         | 15,834         | 15,153         |
| Children                                                                   | 2,622          | 2,409          | 2,186          | 1,811          | 1,374          | 1,600          |

<sup>1</sup> With effect from 1 January 2001. the cut national pensions and spouses supplement were discontinued.

Source: Finnish Centre for Pensions and The Social Insurance Institution of Finland. Statistical Yearbook of Pensioners in Finland.

# Education

## List of diagrams and tables

|     |                                                                                  |    |
|-----|----------------------------------------------------------------------------------|----|
| 7.1 | Children receiving early childhood education and care on 31 Dec. 2000–2023 ..... | 42 |
| 7.2 | Comprehensive schools and general upper secondary schools 2015–2023 .....        | 43 |
| 7.3 | Students and degrees at polytechnics in Helsinki Metropolitan Area 2023 .....    | 43 |
| 7.4 | Students and degrees at universities in Helsinki Metropolitan Area in 2023 ..... | 44 |
| 7.5 | Numbers of students at various levels of education in Helsinki 2000–2022 .....   | 44 |
| 7.6 | Population 15 years of age and over by educational level and age 2000–2022 ..... | 45 |

|                                                                             | 2000   | 2005   | 2010   | 2015   | 2020   | 2022   | 2023   |
|-----------------------------------------------------------------------------|--------|--------|--------|--------|--------|--------|--------|
| <b>Day care in municipal day-care centres</b>                               |        |        |        |        |        |        |        |
| Municipal day-care centres                                                  | 336    | 282    | 286    | 323    | 341    | 343    | 340    |
| Children in day care, total 31. Dec                                         | 19,061 | 16,651 | 19,289 | 23,373 | 26,599 | 26,835 | 26,947 |
| Children aged under 3                                                       | 2,994  | 2,977  | 3,820  | 4,529  | 5,316  | 6,490  | 6,877  |
| Children aged 3–6                                                           | 15,376 | 13,607 | 15,431 | 18,791 | 21,218 | 20,275 | 20,031 |
| Children aged 7                                                             | 691    | 67     | 38     | 53     | 65     | 70     | 39     |
| as % of total population of same age                                        |        |        |        |        |        |        |        |
| % of 1–2 year-olds                                                          | 26.0   | 27.0   | 31.3   | 33.7   | 43.5   | 50.4   | 54.1   |
| % of 3–6 year-olds                                                          | 67.3   | 67.9   | 72.4   | 75.0   | 81.6   | 83.3   | 82.7   |
| <b>Day care in municipal family day care</b>                                |        |        |        |        |        |        |        |
| Children in day care, total 31. Dec                                         | 2,207  | 1,775  | 1,415  | 1,138  | 628    | 473    | 415    |
| Children aged under 3                                                       | 877    | 770    | 632    | 517    | 304    | 272    | 211    |
| Children aged 3–6                                                           | 1,214  | 947    | 761    | 618    | 319    | 199    | 204    |
| Children aged 7                                                             | 116    | 58     | 22     | 3      | 0      | 0      | 0      |
| as % of total population of same age                                        |        |        |        |        |        |        |        |
| % of 1–2 year-olds                                                          | 7.5    | 6.9    | 5.1    | 3.8    | 2.5    | 2.1    | 1.7    |
| % of 3–6 year-olds                                                          | 5.3    | 4.7    | 3.6    | 2.5    | 1.2    | 0.8    | 0.8    |
| <b>Private early childhood education and care with contract of purchase</b> |        |        |        |        |        |        |        |
| Private day-care centres with contract of purchase                          | 52     | 42     | 39     | 10     | –      | –      | –      |
| Children from Helsinki in care                                              | 1,348  | 1,117  | 1,007  | 308    | 205    | 161    | 167    |
| as % of children aged 1–6                                                   | 3.9    | 3.6    | 3.0    | 0.8    | 0.5    | 0.4    | 0.4    |
| <b>Private early childhood education and care<sup>1</sup></b>               |        |        |        |        |        |        |        |
| Private day-care centres                                                    | 116    | 100    | 109    | 118    | 122    | 118    | 115    |
| Places in private day-care centres                                          | 3,120  | 2,768  | 2,926  | 2,998  | –      | –      | –      |

<sup>1</sup> Including private day-care centres with contract of purchase.

Source: Education Division.

## 7.2

### Comprehensive schools and general upper secondary schools 2015–2023

|                                                           | 2015       | 2018       | 2019       | 2020       | 2022       | 2023       |
|-----------------------------------------------------------|------------|------------|------------|------------|------------|------------|
| <b>All schools in Helsinki</b>                            | <b>178</b> | <b>165</b> | <b>165</b> | <b>145</b> | <b>137</b> | <b>137</b> |
| <b>City-owned schools</b>                                 | <b>129</b> | <b>116</b> | <b>116</b> | <b>117</b> | <b>117</b> | <b>117</b> |
| of which                                                  |            |            |            |            |            |            |
| <b>City's Finnish-language schools</b>                    | <b>110</b> | <b>99</b>  | <b>99</b>  | <b>100</b> | <b>100</b> | <b>100</b> |
| Comprehensive schools                                     | 98         | 87         | 87         | 88         | 88         | 88         |
| Upper secondary general schools                           | 11         | 11         | 11         | 11         | 11         | 11         |
| Upper secondary general schools for adults                | 1          | 1          | 1          | 1          | 1          | 1          |
| <b>City's Swedish-language schools</b>                    | <b>19</b>  | <b>17</b>  | <b>17</b>  | <b>17</b>  | <b>17</b>  | <b>17</b>  |
| Comprehensive schools                                     | 16         | 14         | 14         | 14         | 14         | 14         |
| Upper secondary general schools                           | 3          | 3          | 3          | 3          | 3          | 3          |
| <b>State schools</b>                                      | <b>11</b>  | <b>11</b>  | <b>11</b>  | <b>6</b>   | <b>6</b>   | <b>6</b>   |
| Comprehensive schools and upper secondary general schools | 11         | 11         | 11         | 6          | 6          | 6          |
| <b>Private schools</b>                                    | <b>12</b>  | <b>12</b>  | <b>12</b>  | <b>8</b>   | <b>12</b>  | <b>12</b>  |
| Comprehensive schools and upper secondary general schools | 10         | 10         | 10         | 6          | 12         | 12         |
| Upper secondary general schools for adults                | 2          | 2          | 2          | 2          | 2          | 2          |

Source: Education Division.

## 7.3

### Students and degrees at polytechnics in Helsinki Metropolitan Area 2023

|                                                                    | Students   |            | Degrees                              |                                  |
|--------------------------------------------------------------------|------------|------------|--------------------------------------|----------------------------------|
|                                                                    | <i>New</i> | <i>All</i> | <i>Polytechnic bachelor's degree</i> | <i>Higher polytechnic degree</i> |
| Arcada University of Applied Sciences (primarily Swedish-speaking) | 683        | 2,653      | 544                                  | 74                               |
| Diaconia University of Applied Sciences (Diak)                     | 1,095      | 3,362      | 753                                  | 49                               |
| Haaga-Helia University of Applied Sciences                         | 3,175      | 10,195     | 2,129                                | 366                              |
| Humak University of Applied Sciences                               | 838        | 2,491      | 429                                  | 91                               |
| Laurea University of Applied Sciences                              | 3,350      | 10,187     | 2,278                                | 410                              |
| Metropolia University of Applied Sciences                          | 5,209      | 17,473     | 3,164                                | 537                              |

Source: Statistics Finland.

## 7.4

## Students and degrees at universities in Helsinki Metropolitan Area in 2023

|                                     | Students   |            | Degrees                                              |                        |
|-------------------------------------|------------|------------|------------------------------------------------------|------------------------|
|                                     | <i>New</i> | <i>All</i> | <i>Lower and higher university level<sup>1</sup></i> | <i>Doctorate level</i> |
| University of Helsinki              | 4,201      | 31,465     | 5,379                                                | 461                    |
| Aalto University                    | 3,403      | 20,579     | 3,751                                                | 231                    |
| Hanken School of Economics          | 462        | 2,648      | 562                                                  | 14                     |
| University of the Arts <sup>2</sup> | 321        | 1,931      | 509                                                  | 13                     |
| National Defence University         | 398        | 1,190      | 363                                                  | 4                      |

<sup>1</sup> Also including physicians' specialisation diplomas.

<sup>2</sup> The Theatre Academy, Academy of Fine Arts and Sibelius Academy merged into the University of the Arts in 2013.

Source: Statistics Finland.

## 7.5

## Numbers of students at various levels of education in Helsinki 2000–2022

|      | Comprehensive school education | General upper secondary school | Vocational education | Polytechnic education | University education |
|------|--------------------------------|--------------------------------|----------------------|-----------------------|----------------------|
| 2000 | 49,591                         | 17,411                         | 16,492               | 16,889                | 45,439               |
| 2005 | 49,485                         | 16,408                         | 30,406               | 19,573                | 47,449               |
| 2010 | 46,322                         | 16,838                         | 32,614               | 21,384                | 45,900               |
| 2015 | 48,719                         | 15,867                         | 43,370               | 22,665                | 42,250               |
| 2016 | 49,779                         | 15,788                         | 44,003               | 23,093                | 41,962               |
| 2017 | 51,199                         | 15,909                         | 43,164               | 23,952                | 41,240               |
| 2018 | 52,946                         | 15,893                         | 42,633               | 21,783                | 39,747               |
| 2019 | 55,833                         | 16,684                         | 45,186               | 21,976                | 38,224               |
| 2020 | 55,688                         | 17,094                         | 40,108               | 23,024                | 38,190               |
| 2021 | 55,770                         | 17,281                         | 42,111               | 23,435                | 35,928               |
| 2022 | 55,579                         | 18,177                         | 44,509               | 24,955                | 36,507               |

Source: Statistics Finland.

## 7.6

## Population 15 years of age and over by educational level and age 2000–2022

| Year                                                               | Total   | of whom women | Age    |         |         |         |         |
|--------------------------------------------------------------------|---------|---------------|--------|---------|---------|---------|---------|
|                                                                    |         |               | 15–24  | 25–34   | 35–44   | 45–64   | 65–     |
| <b>Population aged 15 or older</b>                                 |         |               |        |         |         |         |         |
| 2000                                                               | 471,692 | 257,019       | 71,689 | 99,083  | 86,249  | 140,105 | 74,566  |
| 2005                                                               | 480,875 | 259,982       | 72,357 | 96,816  | 85,374  | 148,466 | 77,862  |
| 2010                                                               | 508,847 | 273,096       | 76,907 | 108,354 | 80,356  | 155,164 | 88,066  |
| 2015                                                               | 540,300 | 288,195       | 75,722 | 118,848 | 88,456  | 153,210 | 104,064 |
| 2020                                                               | 562,804 | 298,761       | 70,170 | 123,679 | 101,962 | 152,687 | 114,306 |
| 2022                                                               | 569,443 | 301,255       | 71,988 | 121,814 | 103,797 | 154,685 | 117,159 |
| <b>Population with educational qualification (ISCED 3 or more)</b> |         |               |        |         |         |         |         |
| 2000                                                               | 311,475 | 168,382       | 40,012 | 81,784  | 68,463  | 91,484  | 29,732  |
| 2005                                                               | 329,298 | 178,804       | 38,280 | 80,685  | 68,768  | 106,473 | 35,092  |
| 2010                                                               | 360,129 | 195,907       | 40,521 | 89,104  | 64,888  | 118,939 | 46,677  |
| 2015                                                               | 397,018 | 215,950       | 41,965 | 96,801  | 72,084  | 122,457 | 63,711  |
| 2020                                                               | 433,274 | 235,491       | 37,696 | 104,092 | 85,769  | 127,303 | 78,414  |
| 2022                                                               | 435,709 | 237,093       | 36,672 | 100,312 | 85,492  | 129,702 | 83,531  |
| <b>Secondary (ISCED 3–4), total</b>                                |         |               |        |         |         |         |         |
| 2000                                                               | 156,561 | 81,667        | 36,574 | 38,849  | 29,947  | 38,531  | 12,660  |
| 2005                                                               | 163,623 | 84,677        | 36,384 | 39,558  | 28,940  | 44,262  | 14,479  |
| 2010                                                               | 169,328 | 86,309        | 37,293 | 39,624  | 24,834  | 49,386  | 18,191  |
| 2015                                                               | 177,938 | 89,594        | 37,855 | 41,035  | 25,482  | 49,430  | 24,136  |
| 2020                                                               | 179,370 | 89,569        | 32,922 | 41,452  | 28,158  | 47,806  | 29,032  |
| 2022                                                               | 177,515 | 88,467        | 31,912 | 39,658  | 27,909  | 47,557  | 30,479  |
| of which                                                           |         |               |        |         |         |         |         |
| <b>Upper secondary general education</b>                           |         |               |        |         |         |         |         |
| 2000                                                               | 67,922  | 36,446        | 28,339 | 18,763  | 8,831   | 8,896   | 3,093   |
| 2005                                                               | 71,695  | 37,862        | 28,093 | 20,833  | 8,815   | 10,725  | 3,229   |
| 2010                                                               | 70,449  | 36,099        | 27,838 | 18,707  | 7,920   | 11,944  | 4,040   |
| 2015                                                               | 66,846  | 33,472        | 25,510 | 16,299  | 8,091   | 11,529  | 5,417   |
| 2020                                                               | 64,080  | 31,887        | 23,667 | 14,102  | 7,905   | 11,576  | 6,830   |
| 2022                                                               | 63,690  | 31,928        | 23,847 | 13,920  | 7,136   | 11,591  | 7,196   |
| <b>Secondary vocational education</b>                              |         |               |        |         |         |         |         |
| 2000                                                               | 88,639  | 45,221        | 8,235  | 20,086  | 21,116  | 29,635  | 9,567   |
| 2005                                                               | 91,928  | 46,815        | 8,291  | 18,725  | 20,125  | 33,537  | 11,250  |
| 2010                                                               | 98,879  | 50,210        | 9,455  | 20,917  | 16,914  | 37,442  | 14,151  |
| 2015                                                               | 111,092 | 56,122        | 12,345 | 24,736  | 17,391  | 37,901  | 18,719  |
| 2020                                                               | 115,290 | 57,682        | 9,255  | 27,350  | 20,253  | 36,230  | 22,202  |
| 2022                                                               | 113,825 | 56,539        | 8,065  | 25,738  | 20,773  | 35,966  | 23,283  |
| <b>Tertiary education (ISCED 5–6), total</b>                       |         |               |        |         |         |         |         |
| 2000                                                               | 154,914 | 86,715        | 3,438  | 42,935  | 38,516  | 52,953  | 17,072  |
| 2005                                                               | 165,675 | 94,127        | 1,896  | 41,127  | 39,828  | 62,211  | 20,613  |
| 2010                                                               | 190,801 | 109,598       | 3,228  | 49,480  | 40,054  | 69,553  | 28,486  |
| 2015                                                               | 219,080 | 126,356       | 4,110  | 55,766  | 46,602  | 73,027  | 39,575  |
| 2020                                                               | 253,904 | 145,922       | 4,774  | 62,640  | 57,611  | 79,497  | 49,382  |
| 2022                                                               | 258,194 | 148,626       | 4,760  | 60,654  | 57,583  | 82,145  | 53,052  |

## 7.6

## Population 15 years of age and over by educational level and age 2000–2022 (continues)

| Year                                                         | Total   | of whom women | Age    |        |        |        |        |
|--------------------------------------------------------------|---------|---------------|--------|--------|--------|--------|--------|
|                                                              |         |               | 15–24  | 25–34  | 35–44  | 45–64  | 65–    |
| of which                                                     |         |               |        |        |        |        |        |
| <b>Lowest-level tertiary education (ISCED 5B)</b>            |         |               |        |        |        |        |        |
| 2000                                                         | 61,745  | 39,099        | 1,728  | 17,014 | 16,577 | 19,790 | 6,636  |
| 2005                                                         | 53,406  | 34,037        | 32     | 6,453  | 15,387 | 23,527 | 8,007  |
| 2010                                                         | 47,708  | 30,426        | 28     | 1,225  | 9,971  | 25,813 | 10,671 |
| 2015                                                         | 44,023  | 28,289        | 20     | 246    | 4,356  | 25,052 | 14,349 |
| 2020                                                         | 40,651  | 26,247        | 4      | 209    | 1,114  | 22,094 | 17,230 |
| 2022                                                         | 43,990  | 25,816        | 5      | 168    | 559    | 22,097 | 21,161 |
| <b>Lower degree (ISCED 5A)</b>                               |         |               |        |        |        |        |        |
| 2000                                                         | 31,864  | 17,590        | 1,300  | 8,090  | 5,621  | 12,632 | 4,221  |
| 2005                                                         | 42,355  | 24,422        | 1,539  | 16,371 | 6,342  | 13,106 | 4,997  |
| 2010                                                         | 57,985  | 34,304        | 2,999  | 25,202 | 9,442  | 13,562 | 6,780  |
| 2015                                                         | 72,838  | 42,676        | 3,874  | 29,827 | 16,183 | 13,611 | 9,343  |
| 2020                                                         | 87,418  | 50,428        | 4,506  | 32,878 | 22,235 | 16,359 | 11,440 |
| 2022                                                         | 83,695  | 50,432        | 4,466  | 31,787 | 22,203 | 16,058 | 9,181  |
| <b>Higher degree (ISCED 5A)</b>                              |         |               |        |        |        |        |        |
| 2000                                                         | 54,820  | 27,755        | 408    | 17,013 | 14,608 | 17,380 | 5,411  |
| 2005                                                         | 62,239  | 32,720        | 325    | 17,614 | 16,139 | 21,728 | 6,433  |
| 2010                                                         | 75,845  | 40,947        | 200    | 22,250 | 18,479 | 25,758 | 9,158  |
| 2015                                                         | 91,220  | 50,503        | 216    | 24,935 | 23,434 | 29,468 | 13,167 |
| 2020                                                         | 112,433 | 62,981        | 264    | 28,764 | 30,915 | 35,398 | 17,092 |
| 2022                                                         | 116,742 | 65,862        | 289    | 28,022 | 31,686 | 37,957 | 18,788 |
| <b>Doctorate level (ISCED 6)</b>                             |         |               |        |        |        |        |        |
| 2000                                                         | 6,485   | 2,271         | 2      | 818    | 1,710  | 3,151  | 804    |
| 2005                                                         | 7,675   | 2,948         | 0      | 689    | 1,960  | 3,850  | 1,176  |
| 2010                                                         | 9,263   | 3,921         | 1      | 803    | 2,162  | 4,420  | 1,877  |
| 2015                                                         | 10,999  | 4,888         | 0      | 758    | 2,629  | 4,896  | 2,716  |
| 2020                                                         | 13,402  | 6,266         | 0      | 789    | 3,347  | 5,646  | 3,620  |
| 2022                                                         | 13,767  | 6,516         | 0      | 677    | 3,135  | 6,033  | 3,922  |
| <b>Basic education only (ISCED 1–2) or education unknown</b> |         |               |        |        |        |        |        |
| 2000                                                         | 160,217 | 88,637        | 31,677 | 17,299 | 17,786 | 48,621 | 44,834 |
| 2005                                                         | 151,577 | 81,178        | 34,077 | 16,131 | 16,606 | 41,993 | 42,770 |
| 2010                                                         | 148,718 | 77,189        | 36,386 | 19,250 | 15,468 | 36,225 | 41,389 |
| 2015                                                         | 143,282 | 72,245        | 33,757 | 22,047 | 16,372 | 30,753 | 40,353 |
| 2020                                                         | 129,530 | 63,270        | 32,474 | 19,587 | 16,193 | 25,384 | 35,892 |
| 2022                                                         | 133,734 | 64,162        | 35,316 | 21,502 | 18,305 | 24,983 | 33,628 |

Source: Statistics Finland.

# Culture and leisure

## List of diagrams and tables

|     |                                                                                   |    |
|-----|-----------------------------------------------------------------------------------|----|
| 8.1 | Number of visitors at prominent tourist attractions in Helsinki in 2000–2023..... | 48 |
| 8.2 | Helsinki City library statistics 2000–2023.....                                   | 49 |
| 8.3 | Sports and recreation 2000–2023 .....                                             | 50 |





## 8.1

## Number of visitors at prominent tourist attractions in Helsinki in 2000–2023

|                                         | 2000      | 2005      | 2010      | 2015      | 2020    | 2023      |
|-----------------------------------------|-----------|-----------|-----------|-----------|---------|-----------|
| <i>Tourist attraction</i>               |           |           |           |           |         |           |
| Linnanmäki Amusement Park <sup>1</sup>  | 1,055,532 | 1,197,768 | 1,055,000 | 1,000,000 | 700,000 | 1,000,000 |
| Suomenlinna Sea Fortress                | 671,805   | 632,000   | 736,000   | 931,000   | 450,000 | 904,000   |
| Helsinki Zoo                            | 557,697   | 483,202   | 436,135   | 523,602   | 353,194 | 523,427   |
| Temppeliaukio Church                    | 495,120   | 568,440   | 508,393   | 500,000   | 92,145  | 300,000   |
| Uspensky Cathedral                      | 450,400   | 500,500   | 500,000   | 400,000   | 50,000  | 250,000   |
| Helsinki Music Festival                 | 321,872   | 254,454   | 271,896   | 295,970   | 37,000  | 182,000   |
| Casino Helsinki                         | 228,067   | 274,843   | 292,023   | 295,261   | 105,442 | 180,000   |
| Helsinki Cathedral and Crypt            | 312,421   | 399,278   | 452,300   | 500,000   | 50,000  | 250,000   |
| University of Helsinki Botanical Garden | 58,226    | 74,172    | 28,400    | 38,713    | 115,000 | 150,000   |
| Seurasaari Open-Air Museum              | 51,683    | 40,385    | 30,606    | 41,031    | 11,473  | 19,000    |

<sup>1</sup> Also includes the visitors at the events Carnival of Light, *Jouluhattara* Christmas event, and *Jäähelmi* winter event.

Source: The statistics of each separate tourist attraction.

## 8.2

## Helsinki City library statistics 2000–2023

|                                         | 2000      | 2010      | 2015       | 2020       | 2023      |
|-----------------------------------------|-----------|-----------|------------|------------|-----------|
| <b>Libraries</b>                        | <b>37</b> | <b>37</b> | <b>36</b>  | <b>37</b>  | <b>37</b> |
| Mobile libraries (buses)                | 2         | 2         | 2          | 2          | 2         |
| Libraries in hospitals etc.             | 17        | 10        | 10         | 6          | 7         |
| Books (incl. music) on 31 Dec.          | 1,806,255 | 1,612,439 | 1,562,299  | 1,566,144  | 1,579,322 |
| in Finnish                              | 1,389,859 | 1,236,731 | 1,203,615  | 1,214,143  | 1,184,881 |
| in Swedish                              | 191,128   | 145,729   | 129,525    | 132,695    | 145,165   |
| in other languages                      | 188,158   | 199,020   | 203,166    | 219,306    | 249,276   |
| music scores                            | 37,110    | 30,959    | 25,993     | 28,650     | 28,556    |
| Sound recordings                        | 161,141   | 225,654   | 200,480    | 113,176    | 173,171   |
| Image recordings                        | 29,404    | 42,487    | 55,105     | 49,509     | 38,327    |
| Others                                  | 33,582    | 15,741    | 16,826     | 23,955     | 23,439    |
| Newspaper and periodical subscriptions  | 5,949     | 5,005     | 4,715      | 3,402      | 2,711     |
| Borrowers                               | 243,819   | 211,309   | 235,051    | 239,185    | 246,970   |
| per 1,000 inhabitants                   | 443       | 359       | 374        | 366        | 372       |
| Home service clients                    | 302       | 464       | 410        | 412        | 399       |
| Number of visits at the library         | 7,160,113 | 6,449,357 | 6,133,185  | 5,197,400  | 8,156,248 |
| Virtual visits                          | 1,396,804 | 6,803,235 | 12,460,193 | 15,915,048 | 6,943,703 |
| Hours open                              | 96,911    | 94,304    | 103,912    | 85,671     | 115,783   |
| Total, loans                            | 9,150,598 | 9,179,672 | 8,827,319  | 7,281,878  | 9,214,046 |
| per 1,000 inhabitants                   | 16.6      | 15.6      | 14.1       | 14         | 13.8      |
| per 1,000 borrowers                     | 37.7      | 43.4      | 37.6       | 37.5       | 37.2      |
| Number of times the E-material was used | –         | –         | 412,702    | 1,325,620  | 1,957,855 |
| Mobile libraries                        | 237,233   | 239,871   | 192,092    | 113,836    | 205,544   |
| Percentages of loans                    |           |           |            |            |           |
| Books (incl. music)                     | 73.9      | 70.4      | 77.3       | 84.5       | 88.3      |
| Music sheets and scores                 | 1.3       | 1.4       | 1.3        | 1.2        | 1.2       |
| Sound recordings                        | 14.7      | 15.0      | 9.7        | 4.6        | 3.0       |
| Image recordings                        | 6.7       | 10.4      | 8.2        | 5.4        | 3.1       |
| Others                                  | 4.7       | 4.2       | 4.9        | 4.1        | 4.5       |
| Non-fiction books                       | 39.3      | 37.3      | 37.5       | 28.8       | 28.5      |
| Fiction books                           | 60.7      | 62.7      | 62.5       | 55.8       | 71.5      |
| Books for adults                        | 71.5      | 69.6      | 65.6       | 60.0       | 61.1      |
| Books for children                      |           | 30.4      | 34.4       | 40.0       | 38.9      |
| Books in Finnish                        |           | 86.3      | 85.7       | 85.7       | 83.4      |
| Books in Swedish                        |           | 3.8       | 4.3        | 4.6        | 5.4       |
| Books in other languages                |           | 9.9       | 9.9        | 9.7        | 11.3      |
| Events and activities                   | 1,639     | 2,470     | 6,008      | 2,469      | 5,597     |
| Guiding sessions                        | 671       | 866       | 1 248      | 737        | 2,518     |

Source: Culture and Leisure Division.

## 8.3

## Sports and recreation 2000–2023

|                                                           | 2000    | 2010                 | 2015                 | 2020                 | 2023                 |
|-----------------------------------------------------------|---------|----------------------|----------------------|----------------------|----------------------|
| <b>City-coordinated sports activities</b>                 |         |                      |                      |                      |                      |
| Customers                                                 | 49,386  | 103,004              | 149,169              | 84,425               | 32,849               |
| Sports associations and clubs having received allocations | 397     | 398                  | 371                  | 319                  | 322                  |
| <b>Outdoor sports facilities<sup>1</sup></b>              |         |                      |                      |                      |                      |
| Total number                                              | 466     | 462                  | 552                  | 611                  | 642                  |
| of which                                                  |         |                      |                      |                      |                      |
| football pitches, tennis courts etc.                      | 286     | 298                  | 260                  | 254                  | 307                  |
| outdoor swimming stadiums                                 | 2       | 2                    | 2                    | 2                    | 2                    |
| visitors                                                  | 313,773 | 396,592              | 391,739              | 245,887              | 354,977              |
| Beaches for swimming                                      | 25      | 25                   | 24                   | 26                   | 26                   |
| <b>Indoor sports facilities<sup>1</sup></b>               |         |                      |                      |                      |                      |
| Total number                                              | 72      | 69                   | 80                   | 79                   | 85                   |
| of which public swimming pools <sup>2</sup>               | 4       | 4                    | 4                    | 4                    | 4                    |
| visitors at public swimming pools                         | 715,055 | <sup>3</sup> 704,456 | <sup>3</sup> 743,264 | <sup>3</sup> 447,657 | <sup>3</sup> 670,860 |
| <b>Recreational areas and parks</b>                       |         |                      |                      |                      |                      |
| Area, ha                                                  | 4,641   | <sup>4</sup> 3,850   | 3,834                | 3,834                | 3,813                |
| recreational areas, ha                                    | 4,396   | 3,807                | 3,774                | 3,774                | 3,774                |
| parks, ha                                                 | 245     | 43                   | <sup>5</sup> 60      | <sup>5</sup> 60      | <sup>5</sup> 60      |
| Mooring places for boats                                  | 9,342   | 12,063               | 11,923               | 11,878               | 11,900               |
| Overnight stays at campsites                              | 102,850 | 100,787              | 91,234               | 48,254               | 110,601              |

<sup>1</sup> The classification of sports and recreation facilities changed in 2012.

<sup>2</sup> Owned by the city.

<sup>3</sup> Incl. visits at the public swimming pools in Itäkeskus, Jakomäki, Pirkkola and Yrjönkatu. The Jakomäki public swimming pool was closed in 2010.

<sup>4</sup> The decrease is due to the fact that some waterfront recreational areas such as Utela, Ramsinniemi, Meri-Rastila and part of Kallahdenniemi are no longer managed by Helsinki City Sports Department, nor is the Kauhala area in Kirkkonummi.

<sup>5</sup> In addition, Paloheinänhuippu, which has been entirely transferred under the control of the Sports Department.

Source: Culture and Leisure Division.

# Energy and water supply

## List of diagrams and tables

|     |                                                          |    |
|-----|----------------------------------------------------------|----|
| 9.1 | Production and supply of electric energy 1990–2023 ..... | 52 |
| 9.2 | Supply and sale of district heating 1990–2023.....       | 52 |
| 9.3 | Water pumped, sold and consumed 2010–2023 .....          | 53 |

## 9.1

## Production and supply of electric energy 1990–2023

|                                                  | 1990         | 1995         | 2000         | 2010         | 2015         | 2020         | 2023         |
|--------------------------------------------------|--------------|--------------|--------------|--------------|--------------|--------------|--------------|
| <i>GWh</i>                                       |              |              |              |              |              |              |              |
| <b>Supply and production</b>                     |              |              |              |              |              |              |              |
| Shares in hydroelectric power stations           | 270          |              |              | 459          | 868          | 845          | 796          |
| Shares in nuclear-electric power stations        | 597          | } 1,258      | 1,418        | 1,144        | 1,379        | 1,413        | 2,409        |
| Other shares                                     | 229          |              |              |              |              |              |              |
| Actual purchase                                  | 46           | } 326        | 1,023        | 159          | 91           | 118          | ..           |
| Purchase of substitute electricity               | 126          |              |              |              |              |              |              |
| Production of Helsinki City's own power stations | 2,798        | 3,712        | 5,002        | 5,716        | 4,663        | 3,648        | 1,082        |
| Hanasaari                                        |              | 1,835        | 1,721        | 803          | 919          | 534          | 335          |
| Salmisaari                                       |              | 832          | 1,033        | 568          | 566          | 817          | 534          |
| Myllypuro                                        |              | 73           | –            | –            |              | –            | –            |
| Vuosaari                                         |              | 58           | 957          | 3,919        | 4,231        | 2,298        | 212          |
| Kellosaari                                       |              | 1            | 1            | –            | –            | –            | –            |
| <b>Total supply</b>                              | <b>4,066</b> | <b>5,296</b> | <b>7,443</b> | <b>7,859</b> | <b>7,035</b> | <b>6,110</b> | <b>4,686</b> |

Source: Helen Ltd.

## 9.2

## Supply and sale of district heating 1990–2023

|                               | 1990         | 2000         | 2005         | 2010         | 2015         | 2020         | 2023         |
|-------------------------------|--------------|--------------|--------------|--------------|--------------|--------------|--------------|
| <b>Total supply, GWh</b>      | <b>5,633</b> | <b>6,537</b> | <b>7,103</b> | <b>7,850</b> | <b>6,436</b> | <b>6,397</b> | <b>6,537</b> |
| of which                      |              |              |              |              |              |              |              |
| Hanasaari power stations      | 3,074        | 1,267        | 1,135        | 1,774        | 1,297        | 1,821        | 738          |
| Salmisaari power stations     | 1,601        | 1,298        | 1,621        | 1,005        | 1,296        | 1,144        | 1,378        |
| Vuosaari power stations       |              | 3,559        | 3,783        | 3,887        | 3,283        | 2,408        | 247          |
| <b>Heating sales, GWh</b>     | <b>5,444</b> | <b>6,106</b> | <b>6,569</b> | <b>7,363</b> | <b>6,024</b> | <b>6,056</b> | <b>6,677</b> |
| To the distribution area      | 5,425        | 5,886        | 6,519        | 7,346        | 5,985        | 6,042        | 6,676        |
| Outside the distribution area | 19           | 220          | 50           | 17           | 39           | 15           | 1            |
| Number of clients             | 9,257        | 11,374       | 12,800       | 14,010       | 15,039       | 16,000       | 15,543       |

Source: Helen Ltd.

## 9.3

## Water pumped, sold and consumed 2010–2023

|                                                            | 2010   | 2015   | 2020   | 2022   | 2023   |
|------------------------------------------------------------|--------|--------|--------|--------|--------|
| <b>Total water pumped, 1,000 m<sup>3</sup></b>             |        |        |        |        |        |
| Metropolitan Area                                          | 90,097 | 88,619 | 96,000 | 93,800 | 93,700 |
| <b>Total sales, 1,000 m<sup>3</sup></b>                    |        |        |        |        |        |
| Metropolitan Area                                          | 71,360 | 71,830 | 75,800 | 75,300 | 73,700 |
| <b>Price of water on 31 Dec., euro/m<sup>3</sup></b>       |        |        |        |        |        |
| Helsinki                                                   | 0.78   | 1.08   | 1.19   | 1.27   | 1.40   |
| <b>Price of waste water on 31 Dec., euro/m<sup>3</sup></b> |        |        |        |        |        |
| Helsinki                                                   | 1.11   | 1.34   | 1.41   | 1.49   | 1.64   |

Source: Helsinki Region Environmental Services Authority and the cities concerned.

# City finances and personnel

## List of diagrams and tables

|      |                                                                                                                               |    |
|------|-------------------------------------------------------------------------------------------------------------------------------|----|
| 10.1 | City of Helsinki consolidated balance sheet 31 Dec. 2010–2023.....                                                            | 55 |
| 10.2 | City of Helsinki tax revenue, the proportion of state grants in the operational economy, and the annual margin 2000–2023..... | 56 |
| 10.3 | City staff by divisions on 31 Dec. 2023.....                                                                                  | 56 |

| Million euros, 31 Dec.                        | 2010            | 2015            | 2020            | 2021            | 2022            | 2023            |
|-----------------------------------------------|-----------------|-----------------|-----------------|-----------------|-----------------|-----------------|
| <b>Assets</b>                                 |                 |                 |                 |                 |                 |                 |
| <b>Fixed assets</b>                           |                 |                 |                 |                 |                 |                 |
| Intangible assets                             | 370.6           | 305.7           | 249.4           | 244.1           | 473.4           | 390.5           |
| Tangible assets                               | 11,252.0        | 12,992.2        | 16,379.2        | 17,039.4        | 18,068.7        | 19,129.4        |
| Securities and other long-term investments    | 1,247.3         | 1,167.8         | 1,286.6         | 1,361.7         | 1,405.8         | 1,417.7         |
| <b>Assets managed</b>                         | <b>471.4</b>    | <b>455.7</b>    | <b>659.5</b>    | <b>667.9</b>    | <b>592.7</b>    | <b>652.5</b>    |
| <b>Current assets</b>                         |                 |                 |                 |                 |                 |                 |
| Inventories                                   | 87.5            | 98.8            | 145.1           | 130.5           | 305.7           | 190.0           |
| Receivables                                   | 404.4           | 440.0           | 608.5           | 745.5           | 853.0           | 1,228.5         |
| Investments                                   | 623.9           | 496.4           | 772.8           | 624.2           | 977.0           | 1,207.4         |
| Cash and bank receivables                     | 347.8           | 1,001.6         | 855.8           | 954.2           | 830.6           | 360.1           |
| <b>Total assets</b>                           | <b>14,805.0</b> | <b>16,958.2</b> | <b>20,956.9</b> | <b>21,767.5</b> | <b>23,506.9</b> | <b>24,576.1</b> |
| <b>Liabilities</b>                            |                 |                 |                 |                 |                 |                 |
| <b>Capital</b>                                |                 |                 |                 |                 |                 |                 |
| Fixed capital                                 | 2,974.4         | 2,972.4         | 2,972.4         | 2,972.4         | 2,972.4         | 3,014.8         |
| Basic capital of associations and foundations | 5.8             | 5.8             | 7.0             | 7.0             | 9.1             | 9.1             |
| Revaluation reserve                           | 1,832.2         | 1,813.2         | 1,795.8         | 1,792.6         | 1,790.6         | 1,790.3         |
| Other own funds                               | 711.7           | 812.7           | 1,085.6         | 1,163.8         | 1,182.0         | 1,146.8         |
| Other equity                                  | 734.2           | 734.1           | 734.1           | 734.1           | 734.1           | 732.2           |
| Surplus/deficit from previous financial years | 1,314.0         | 3,276.8         | 5,668.9         | 6,185.4         | 6,536.6         | 7,015.3         |
| Surplus/deficit for financial year            | 418.2           | 282.4           | 568.9           | 369.3           | 430.5           | 440.7           |
| <b>Minority interests</b>                     | <b>60.5</b>     | <b>69.6</b>     | <b>171.4</b>    | <b>177.8</b>    | <b>313.7</b>    | <b>287.4</b>    |
| <b>Provisions</b>                             | <b>938.5</b>    | <b>179.6</b>    | <b>94.6</b>     | <b>83.9</b>     | <b>98.4</b>     | <b>105.7</b>    |
| <b>Capital managed</b>                        | <b>779.6</b>    | <b>567.2</b>    | <b>683.3</b>    | 680.4           | 630.5           | 681.8           |
| Loans and borrowings                          | 3,825.0         | 4,541.5         | 5,383.8         | 5,719.8         | 6,214.6         | 7,293.3         |
| Long-term                                     | 1,212.7         | 1,702.9         | 1,791.1         | 1,881.0         | 2,594.4         | 2,058.7         |
| <b>Total liabilities</b>                      | <b>14,805.0</b> | <b>16,958.2</b> | <b>20,956.9</b> | <b>21,767.5</b> | <b>23,506.9</b> | <b>24,576.1</b> |
| Loans per inhabitant, euro                    | 6,917           | 7,977           | 8,442           | 8,941           | 9,800           | 10,981          |

Source: Annual accounts of the City of Helsinki.



## 10.2

## City of Helsinki tax revenue, the proportion of state grants in the operational economy, and the annual margin 2000–2023

|                                                                   | Total tax revenue <sup>1</sup> | of which      |                 |                                | Share of state grants in the operational economy | Annual margin |
|-------------------------------------------------------------------|--------------------------------|---------------|-----------------|--------------------------------|--------------------------------------------------|---------------|
|                                                                   |                                | Municipal tax | Real estate tax | Share of corporate tax revenue |                                                  |               |
| <i>Current monetary value in the relevant year, million euros</i> |                                |               |                 |                                |                                                  |               |
| 2000                                                              | 2,163                          | 1,347         | 102             | 713                            | -13                                              | 506.1         |
| 2010                                                              | 2,506                          | 2,064         | 185             | 257                            | 250                                              | 388.0         |
| 2011                                                              | 2,740                          | 2,218         | 187             | 335                            | 260                                              | 574.3         |
| 2012                                                              | 2,759                          | 2,306         | 189             | 263                            | 297                                              | 439.1         |
| 2013                                                              | 2,906                          | 2,442         | 195             | 269                            | 276                                              | 472.7         |
| 2014                                                              | 2,952                          | 2,435         | 207             | 310                            | 251                                              | 480.7         |
| 2015                                                              | 3,068                          | 2,481         | 214             | 373                            | 273                                              | 265.1         |
| 2016                                                              | 3,206                          | 2,586         | 221             | 397                            | 316                                              | 569.4         |
| 2017                                                              | 3,381                          | 2,595         | 257             | 529                            | 220                                              | 837.9         |
| 2018                                                              | 3,417                          | 2,581         | 263             | 575                            | 197                                              | 752.0         |
| 2019                                                              | 3,494                          | 2,633         | 274             | 587                            | 233                                              | 741.0         |
| 2020                                                              | 3,565                          | 2,792         | 254             | 519                            | 479                                              | 863.4         |
| 2021                                                              | 3,829                          | 2,821         | 281             | 727                            | 330                                              | 757.1         |
| 2022                                                              | 4,100                          | 3,029         | 296             | 775                            | 378                                              | 732.8         |
| 2023                                                              | 2,038                          | 1,922         | 307             | 539                            | 200                                              | 854.7         |

<sup>1</sup> The total sum of tax revenue also includes other tax revenue, chiefly dog tax. (2000–2017).

Source: Annual accounts of the City of Helsinki.

## 10.3

## City staff by divisions on 31 Dec. 2023

|                                          | Permanent staff | Temporary staff | Total         |
|------------------------------------------|-----------------|-----------------|---------------|
| Central Administration                   | 3,649           | 658             | 4,307         |
| The Urban Environment Division           | 1,516           | 182             | 1,698         |
| Education division                       | 9,391           | 5,410           | 14,801        |
| Culture and leisure division             | 1,430           | 411             | 1,841         |
| Social services and health care division | 11,215          | 3,697           | 14,912        |
| <b>Total</b>                             | <b>27,201</b>   | <b>10,358</b>   | <b>37,559</b> |

Source: Executive Office. Financial Management Helsinki.

# Labour force

## List of diagrams and tables

|             |                                                                                         |           |
|-------------|-----------------------------------------------------------------------------------------|-----------|
| <b>11.1</b> | <b>Labour force by industry and age 2022 .....</b>                                      | <b>58</b> |
| <b>11.2</b> | <b>Percentage of employed people in various age groups by age and gender 2022 .....</b> | <b>59</b> |
| <b>11.3</b> | <b>Unemployment rate % by gender in 2000–2022 .....</b>                                 | <b>60</b> |

|                                                                        | Total          |              | Age           |                |               |               |               |
|------------------------------------------------------------------------|----------------|--------------|---------------|----------------|---------------|---------------|---------------|
|                                                                        |                | %            | -24           | 25-39          | 40-49         | 50-59         | 60-           |
| <b>Labour force total</b>                                              | <b>359,047</b> |              | <b>30,965</b> | <b>147,483</b> | <b>80,432</b> | <b>68,197</b> | <b>31,970</b> |
| <b>Employed total</b>                                                  | <b>322,759</b> | <b>100.0</b> | <b>28,619</b> | <b>134,319</b> | <b>72,251</b> | <b>60,096</b> | <b>27,474</b> |
| A Agriculture forestry and fishing                                     | 473            | 0.1          | 52            | 124            | 113           | 109           | 75            |
| B Mining and quarrying                                                 | 78             | 0.0          | 3             | 29             | 13            | 21            | 12            |
| C Manufacturing                                                        | 18,311         | 5.7          | 826           | 7,316          | 4,666         | 3,950         | 1,553         |
| D Electricity gas heat and air conditioning supply                     | 1,541          | 0.5          | 47            | 724            | 358           | 287           | 125           |
| E Water supply sewerage, waste management and remediation activities   | 747            | 0.2          | 50            | 316            | 157           | 160           | 64            |
| F Construction                                                         | 14,202         | 4.4          | 871           | 5,905          | 3,346         | 2,995         | 1,085         |
| G Wholesale and retail trade; repair of motor vehicles and motorcycles | 31,925         | 9.9          | 5,369         | 12,691         | 6,245         | 5,419         | 2,201         |
| H Transportation and storage                                           | 15,090         | 4.7          | 1,252         | 5,592          | 3,351         | 3,454         | 1,441         |
| I Accommodation and food service activities                            | 14,200         | 4.4          | 3,466         | 5,684          | 2,526         | 1,904         | 620           |
| J Information and communication                                        | 30,869         | 9.6          | 1,018         | 15,456         | 8,465         | 4,397         | 1,533         |
| K Financial and insurance activities                                   | 12,542         | 3.9          | 658           | 5,892          | 2,873         | 2,232         | 887           |
| L Real estate activities                                               | 4,316          | 1.3          | 190           | 1,479          | 849           | 1,022         | 776           |
| M Professional, scientific and technical activities                    | 34,299         | 10.6         | 1,685         | 16,952         | 7,860         | 5,362         | 2,440         |
| N Administrative and support service activities                        | 28,289         | 8.8          | 5,476         | 11,643         | 4,760         | 4,361         | 2,049         |
| O Public administration and defence; compulsory social security        | 18,875         | 5.8          | 438           | 6,607          | 4,710         | 4,693         | 2,427         |
| P Education                                                            | 24,943         | 7.7          | 1,653         | 9,538          | 6,190         | 5,076         | 2,486         |
| Q Human health and social work activities                              | 44,106         | 13.7         | 2,894         | 17,274         | 9,326         | 9,458         | 5,154         |
| R Arts, entertainment and recreation                                   | 11,036         | 3.4          | 1,415         | 4,256          | 2,583         | 1,888         | 894           |
| S Other service activities                                             | 10,821         | 3.4          | 739           | 4,175          | 2,492         | 2,274         | 1,141         |
| T Activities of households as employers                                | 619            | 0.2          | 99            | 260            | 97            | 95            | 68            |
| U Activities of extraterritorial organisations and bodies              | 261            | 0.1          | 2             | 111            | 71            | 56            | 21            |
| X Industry unknown                                                     | 5,216          | 1.6          | 416           | 2,295          | 1,200         | 883           | 422           |
| <b>Unemployed</b>                                                      | <b>36,288</b>  |              | <b>2,346</b>  | <b>13,164</b>  | <b>8,181</b>  | <b>8,101</b>  | <b>4,496</b>  |
| Unemployment rate, %                                                   | 10.1           |              | 7.6           | 8.9            | 10.2          | 11.9          | 14.1          |

<sup>1</sup> Standard Industrial Classification 2008.

Source: Statistics Finland. Employment statistics.

## 11.2

## Percentage of employed people in various age groups by age and gender 2022

| Age, year olds          | Helsinki    | Espoo       | Vantaa      | Kauniainen  | Tampere     | Turku       | Oulu        | Finland     |
|-------------------------|-------------|-------------|-------------|-------------|-------------|-------------|-------------|-------------|
| <b>15–74</b>            | <b>62.8</b> | <b>64.2</b> | <b>63.6</b> | <b>62.6</b> | <b>59.4</b> | <b>57.9</b> | <b>58.0</b> | <b>58.8</b> |
| 15–24                   | 39.8        | 34.4        | 41.6        | 25.2        | 39.8        | 42.0        | 34.7        | 35.7        |
| 25–34                   | 75.3        | 75.1        | 74.5        | 75.5        | 72.6        | 71.2        | 69.9        | 74.7        |
| 35–44                   | 78.4        | 80.5        | 78.7        | 83.9        | 78.3        | 76.2        | 79.6        | 81.1        |
| 45–54                   | 79.9        | 84.7        | 81.9        | 88.0        | 80.1        | 78.4        | 82.6        | 82.9        |
| 55–64                   | 70.3        | 75.2        | 72.0        | 78.7        | 68.3        | 67.2        | 67.9        | 69.1        |
| 65–74                   | 7.9         | 7.8         | 6.9         | 10.2        | 6.2         | 5.8         | 5.2         | 5.9         |
| <b>Men, year olds</b>   |             |             |             |             |             |             |             |             |
| <b>15–74</b>            | <b>63.1</b> | <b>65.5</b> | <b>65.4</b> | <b>62.3</b> | <b>60.1</b> | <b>58.0</b> | <b>58.3</b> | <b>58.8</b> |
| 15–24                   | 35.1        | 31.6        | 39.5        | 20.2        | 36.3        | 38.2        | 32.0        | 33.5        |
| 25–34                   | 76.2        | 78.4        | 78.2        | 76.2        | 73.3        | 71.1        | 70.7        | 75.9        |
| 35–44                   | 79.4        | 83.0        | 80.8        | 84.8        | 78.9        | 76.4        | 80.2        | 81.9        |
| 45–54                   | 78.2        | 84.5        | 81.4        | 90.1        | 79.1        | 76.5        | 81.7        | 81.6        |
| 55–64                   | 67.5        | 74.1        | 70.1        | 77.2        | 66.1        | 64.0        | 65.8        | 66.4        |
| 65–74                   | 8.7         | 9.1         | 7.8         | 11.4        | 7.1         | 6.5         | 5.8         | 6.0         |
| <b>Women, year olds</b> |             |             |             |             |             |             |             |             |
| <b>15–74</b>            | <b>62.5</b> | <b>62.8</b> | <b>61.7</b> | <b>63.0</b> | <b>58.8</b> | <b>57.9</b> | <b>57.7</b> | <b>58.8</b> |
| 15–24                   | 43.8        | 37.5        | 43.6        | 30.8        | 43.0        | 45.3        | 37.4        | 38.1        |
| 25–34                   | 74.5        | 71.6        | 70.5        | 74.8        | 71.8        | 71.3        | 69.0        | 73.4        |
| 35–44                   | 77.3        | 77.8        | 76.3        | 83.0        | 77.6        | 76.1        | 79.0        | 80.3        |
| 45–54                   | 81.6        | 84.9        | 82.5        | 86.1        | 81.0        | 80.3        | 83.7        | 84.2        |
| 55–64                   | 72.7        | 76.3        | 73.9        | 80.1        | 70.2        | 70.1        | 69.9        | 71.8        |
| 65–74                   | 7.2         | 6.8         | 6.2         | 9.1         | 5.6         | 5.2         | 4.8         | 5.7         |

Source: Statistics Finland. Employment statistics.

## 11.3

## Unemployment rate % by gender in 2000–2022

|              | Helsinki | Espoo | Vantaa | Kauniainen | Tampere | Turku | Oulu | Finland |
|--------------|----------|-------|--------|------------|---------|-------|------|---------|
| <b>Total</b> |          |       |        |            |         |       |      |         |
| 2000         | 8.3      | 5.9   | 7.2    | 4.2        | 14.0    | 13.9  | 13.7 | 12.5    |
| 2005         | 9.1      | 6.1   | 7.9    | 4.2        | 12.5    | 11.4  | 13.2 | 11.1    |
| 2010         | 7.8      | 5.8   | 8.5    | 4.1        | 13.8    | 12.9  | 12.8 | 10.3    |
| 2014         | 11.6     | 9.7   | 11.4   | 6.9        | 17.4    | 16.8  | 17.2 | 13.8    |
| 2015         | 12.2     | 10.6  | 12.3   | 7.2        | 18.3    | 17.1  | 17.3 | 14.3    |
| 2020         | 14.1     | 11.5  | 14.4   | 8.8        | 14.7    | 15.9  | 14.0 | 13.3    |
| 2021         | 10.9     | 8.9   | 11.8   | 6.1        | 10.9    | 12.6  | 11.7 | 10.2    |
| 2022         | 10.1     | 8.1   | 10.4   | 5.9        | 9.9     | 11.5  | 11.9 | 9.6     |
| <b>Men</b>   |          |       |        |            |         |       |      |         |
| 2000         | 9.6      | 6.4   | 7.9    | 4.5        | 13.3    | 14.4  | 13.4 | 12.3    |
| 2005         | 10.8     | 6.9   | 8.7    | 5.0        | 12.5    | 12.2  | 13.8 | 11.4    |
| 2010         | 9.5      | 6.6   | 9.9    | 4.8        | 15.4    | 16.1  | 15.0 | 11.9    |
| 2014         | 13.3     | 10.6  | 12.5   | 7.9        | 19.9    | 19.7  | 19.9 | 15.8    |
| 2015         | 13.9     | 11.4  | 13.4   | 8.1        | 20.3    | 19.9  | 19.4 | 16.1    |
| 2020         | 15.7     | 12.0  | 14.7   | 9.8        | 16.6    | 19.3  | 16.1 | 15.2    |
| 2021         | 12.3     | 9.3   | 12.1   | 6.5        | 12.3    | 14.4  | 13.5 | 11.6    |
| 2022         | 11.3     | 8.3   | 10.7   | 7.0        | 10.9    | 13.4  | 13.5 | 10.9    |
| <b>Women</b> |          |       |        |            |         |       |      |         |
| 2000         | 7.1      | 5.4   | 6.5    | 3.9        | 14.7    | 13.4  | 14.1 | 12.7    |
| 2005         | 7.5      | 5.4   | 7.0    | 3.5        | 12.5    | 10.7  | 12.5 | 10.8    |
| 2010         | 6.3      | 5.0   | 7.1    | 3.4        | 12.1    | 9.9   | 10.4 | 8.8     |
| 2014         | 10.0     | 8.8   | 10.3   | 6.1        | 15.0    | 14.0  | 14.5 | 11.7    |
| 2015         | 10.7     | 9.7   | 11.0   | 6.3        | 16.2    | 14.4  | 15.1 | 12.4    |
| 2020         | 12.6     | 11.0  | 14.0   | 7.9        | 12.8    | 12.6  | 11.8 | 11.4    |
| 2021         | 9.6      | 8.5   | 11.4   | 5.8        | 9.6     | 10.8  | 9.8  | 8.8     |
| 2022         | 9.0      | 7.9   | 10.1   | 4.8        | 8.8     | 9.6   | 10.3 | 8.2     |

Source: Statistics Finland. Employment Statistics.

# Economic activities

## List of diagrams and tables

|             |                                                                                     |           |
|-------------|-------------------------------------------------------------------------------------|-----------|
| <b>12.1</b> | <b>Jobs by industry in Helsinki 2021–2022</b> .....                                 | <b>62</b> |
| <b>12.2</b> | <b>Jobs by industry in 2022</b> .....                                               | <b>63</b> |
| <b>12.3</b> | <b>Number of enterprises, staff and turnover by industry in Helsinki 2022</b> ..... | <b>64</b> |

## 12.1

## Jobs by industry in Helsinki 2021–2022

| Industry (SIC 2008)                                                    | 2021           | 2022           |                        |
|------------------------------------------------------------------------|----------------|----------------|------------------------|
|                                                                        | Number         | Number         | % of the whole country |
| <b>All industries total</b>                                            | <b>416 086</b> | <b>426,738</b> | <b>17.6</b>            |
| A Agriculture, forestry and fishing                                    | 380            | 403            | 0.7                    |
| B Mining and quarrying                                                 | 60             | 62             | 1.0                    |
| C Manufacturing                                                        | 18,096         | 18,945         | 6.2                    |
| D Electricity, gas, steam and air conditioning supply                  | 2,166          | 1,955          | 16.1                   |
| E Water supply; sewerage, waste management                             | 1,195          | 971            | 7.8                    |
| F Construction                                                         | 21,058         | 20,883         | 12.2                   |
| G Wholesale and retail trade; repair of motor vehicles and motorcycles | 38,149         | 38,495         | 14.9                   |
| H Transportation and storage                                           | 17,300         | 16,842         | 13.9                   |
| I Accommodation and food service activities                            | 15,039         | 17,478         | 20.4                   |
| J Information and communication                                        | 46,864         | 49,592         | 42.8                   |
| K Financial and insurance activities                                   | 21,366         | 22,441         | 48.5                   |
| L Real estate activities                                               | 6,626          | 6,877          | 27.6                   |
| M Professional, scientific and technical activities                    | 45,386         | 46,822         | 30.7                   |
| N Administrative and support service activities                        | 33,928         | 34,651         | 18.5                   |
| O Public administration and defence; compulsory social security        | 31,922         | 32,297         | 28.7                   |
| P Education                                                            | 24,747         | 25,337         | 14.6                   |
| Q Human health and social work activities                              | 57,506         | 57,447         | 13.4                   |
| R Arts, entertainment and recreation                                   | 12,174         | 12,836         | 27.8                   |
| S Other service activities                                             | 15,950         | 16,158         | 25.8                   |
| T Activities of households as employers                                | 660            | 613            | 9.3                    |
| U Activities of extraterritorial organisations and bodies              | 426            | 409            | 92.5                   |
| X Industry unknown                                                     | 5,088          | 5,224          | 17.1                   |

Source: Statistics Finland. Employment statistics.

# 12.2

## Jobs by industry in 2022

|                                   | Jobs, total      | Industry (SIC 2008)            |                                    |                       |                                                                |                                                                      |                                                 |                   | Workplace self-sufficiency, % |
|-----------------------------------|------------------|--------------------------------|------------------------------------|-----------------------|----------------------------------------------------------------|----------------------------------------------------------------------|-------------------------------------------------|-------------------|-------------------------------|
|                                   |                  | Manufacturing and construction | Trade, transport and accommodation | Information and media | Finance, real-estate, liberal professions and support services | Public administration, education, health and social welfare services | Arts and culture, recreation and other services | Other and unknown |                               |
|                                   |                  | C,F                            | G-I                                | J                     | K-N                                                            | O-Q                                                                  | R-S                                             | A-B, D-E, T, U, X |                               |
| <b>Helsinki Metropolitan Area</b> | <b>691,488</b>   | <b>88,529</b>                  | <b>146,374</b>                     | <b>67,282</b>         | <b>162,528</b>                                                 | <b>170,723</b>                                                       | <b>38,281</b>                                   | <b>17,771</b>     | <b>120.8</b>                  |
| Helsinki                          | 426,738          | 39,828                         | 72,815                             | 49,592                | 110,791                                                        | 115,081                                                              | 28,994                                          | 9,637             | 135.7                         |
| Espoo                             | 135,386          | 21,477                         | 26,813                             | 15,544                | 28,641                                                         | 33,016                                                               | 5,272                                           | 4,623             | 96.7                          |
| Vantaa                            | 126,921          | 27,131                         | 46,494                             | 2,102                 | 22,680                                                         | 21,345                                                               | 3,768                                           | 3,401             | 112.0                         |
| Kauniainen                        | 2,443            | 93                             | 252                                | 44                    | 416                                                            | 1,281                                                                | 247                                             | 110               | 54.4                          |
| <b>Rest of Helsinki Region</b>    | <b>106,551</b>   | <b>25,718</b>                  | <b>24,106</b>                      | <b>1,251</b>          | <b>16,759</b>                                                  | <b>30,011</b>                                                        | <b>4,626</b>                                    | <b>4,080</b>      | <b>69.0</b>                   |
| Hyvinkää                          | 19,913           | 5,133                          | 4,396                              | 200                   | 2,945                                                          | 6,047                                                                | 724                                             | 468               | 99.7                          |
| Järvenpää                         | 14,245           | 3,059                          | 2,905                              | 132                   | 2,374                                                          | 4,731                                                                | 681                                             | 363               | 70.2                          |
| Kerava                            | 12,419           | 2,856                          | 3,073                              | 182                   | 2,168                                                          | 3,002                                                                | 704                                             | 434               | 76.1                          |
| Kirkkonummi                       | 10,998           | 2,190                          | 1,919                              | 151                   | 2,384                                                          | 3,475                                                                | 474                                             | 405               | 59.9                          |
| Nurmijärvi                        | 6,372            | 1,276                          | 1,622                              | 63                    | 743                                                            | 2,041                                                                | 227                                             | 400               | 68.7                          |
| Mäntsälä                          | 12,367           | 3,361                          | 2,835                              | 112                   | 1,803                                                          | 3,140                                                                | 522                                             | 594               | 61.9                          |
| Pornainen                         | 1,036            | 169                            | 202                                | 9                     | 154                                                            | 326                                                                  | 52                                              | 124               | 43.5                          |
| Sipoo                             | 7,080            | 1,400                          | 2,237                              | 80                    | 1,126                                                          | 1,647                                                                | 280                                             | 310               | 69.0                          |
| Tuusula                           | 14,123           | 4,358                          | 3,400                              | 189                   | 2,005                                                          | 3,057                                                                | 558                                             | 556               | 79.8                          |
| Vihti                             | 7,998            | 1,916                          | 1,517                              | 133                   | 1,057                                                          | 2,545                                                                | 404                                             | 426               | 61.3                          |
| <b>Helsinki Region</b>            | <b>798,039</b>   | <b>114,247</b>                 | <b>170,480</b>                     | <b>68,533</b>         | <b>179,287</b>                                                 | <b>200,734</b>                                                       | <b>42,907</b>                                   | <b>21,851</b>     | <b>109.8</b>                  |
| Tampere                           | 136,760          | 23,458                         | 22,959                             | 12,269                | 28,526                                                         | 40,612                                                               | 5,946                                           | 2,990             | 123.8                         |
| Turku                             | 107,904          | 16,992                         | 19,755                             | 5,018                 | 21,472                                                         | 36,988                                                               | 5,022                                           | 2,657             | 126.8                         |
| Oulu                              | 97,459           | 18,195                         | 16,083                             | 5,786                 | 17,855                                                         | 32,709                                                               | 3,986                                           | 2,845             | 107.3                         |
| <b>Finland, total</b>             | <b>2,423,548</b> | <b>478,317</b>                 | <b>466,104</b>                     | <b>115,776</b>        | <b>410,926</b>                                                 | <b>715,583</b>                                                       | <b>108,973</b>                                  | <b>127,869</b>    | <b>106.1</b>                  |

NOTE: The statistics comply with the district division of 1 Jan. 2024. Data from merged municipalities have been combined.

Source: Statistics Finland. "Kaupunki- ja seutuindikaattorit", i.e. urban and regional indicator database.



# 12.3

## Number of enterprises, staff and turnover by industry in Helsinki 2022

|              | Industry (SIC 2008)                                 | Enter-<br>prises | %          | Staff          | %          | Turnover <sup>1</sup> | %          |
|--------------|-----------------------------------------------------|------------------|------------|----------------|------------|-----------------------|------------|
| <b>Total</b> |                                                     | <b>81,151</b>    | <b>100</b> | <b>286,214</b> | <b>100</b> | <b>112,082,491</b>    | <b>100</b> |
| C            | Manufacturing                                       | 2,293            | 2.8        | 18,704         | 6.5        | 24,065,522            | 21.5       |
| D            | Electricity, gas, steam and air conditioning supply | 274              | 0.3        | 1,995          | 0.7        | 7,109,264             | 6.3        |
| E            | Water supply; sewerage, waste management            | 95               | 0.1        | 924            | 0.3        | 355,931               | 0.3        |
| F            | Construction                                        | 4,205            | 5.2        | 20,363         | 7.1        | 6,965,917             | 6.2        |
| G            | Wholesale and retail trade                          | 8,259            | 10.2       | 32,955         | 11.5       | 33,998,759            | 30.3       |
| H            | Transportation and storage                          | 2,920            | 3.6        | 15,146         | 5.3        | 3,603,309             | 3.2        |
| I            | Accommodation and food service activities           | 3,406            | 4.2        | 13,246         | 4.6        | 1,907,108             | 1.7        |
| J            | Information and communication                       | 6,637            | 8.2        | 43,093         | 15.1       | 12,431,651            | 11.1       |
| K            | Financial and insurance activities                  | 6,009            | 7.4        | ..             | ..         | ..                    | ..         |
| L            | Real estate activities                              | 7,393            | 9.1        | 5,447          | 1.9        | 5,458,770             | 4.9        |
| M            | Professional, scientific and technical activities   | 17,002           | 21.0       | 36,943         | 12.9       | 7,487,272             | 6.7        |
| N            | Administrative and support service activities       | 3,804            | 4.7        | 50,479         | 17.6       | 4,647,577             | 4.1        |
| P            | Education                                           | 1,922            | 2.4        | 2,200          | 0.8        | 271,095               | 0.2        |
| Q            | Human health and social work activities             | 4,879            | 6.0        | 14,353         | 5.0        | 1,880,282             | 1.7        |
| R            | Arts, entertainment and recreation                  | 4,609            | 5.7        | 4,045          | 1.4        | 1,417,271             | 1.3        |
| S            | Other service activities                            | 4,821            | 5.9        | 4,667          | 1.6        | 418,831               | 0.4        |
| A-B, T, U, X | Other or unknown                                    | 2,623            | 3.2        | 87             | 0.0        | 22,292                | 0.0        |

<sup>1</sup> Due to rounding off the figures in the turnover column may not add up exactly to the total turnover figure.

Source: Statistics Finland's Business Register.

# Income and consumption

## List of diagrams and tables

|             |                                                                                                          |           |
|-------------|----------------------------------------------------------------------------------------------------------|-----------|
| <b>13.1</b> | <b>Income recipients and income by income bracket in Helsinki 2022 .....</b>                             | <b>66</b> |
| <b>13.2</b> | <b>Income recipients by age and gender 2014–2022.....</b>                                                | <b>67</b> |
| <b>13.3</b> | <b>Income subject to state taxation on average by gender and age of income recipient 2014–2022 .....</b> | <b>68</b> |
| <b>13.4</b> | <b>State taxable income of various kinds of households 2022.....</b>                                     | <b>68</b> |

## 13.1

## Income recipients and income by income bracket in Helsinki 2022

| Income bracket                                   | Income recipients |              |                | Income subject to state taxation, share % |                   |                  |
|--------------------------------------------------|-------------------|--------------|----------------|-------------------------------------------|-------------------|------------------|
|                                                  | Persons           | %            | Accumulation % | Total                                     | Earned income %   | Capital income % |
| -5,000                                           | 49,816            | 8.7          | 8.7            | 0.3                                       | 0.3               | 0.4              |
| 5,000-10,000                                     | 39,878            | 6.9          | 15.6           | 1.3                                       | 1.4               | 0.5              |
| 10,000-15,000                                    | 53,387            | 9.3          | 24.9           | 2.6                                       | 2.9               | 0.5              |
| 15,000-20,000                                    | 43,602            | 7.6          | 32.5           | 3.1                                       | 3.4               | 0.7              |
| 20,000-25,000                                    | 42,274            | 7.3          | 39.8           | 3.9                                       | 4.3               | 0.9              |
| 25,000-30,000                                    | 42,980            | 7.5          | 47.3           | 4.8                                       | 5.3               | 1.1              |
| 30,000-35,000                                    | 44,621            | 7.8          | 55.0           | 5.9                                       | 6.5               | 1.3              |
| 35,000-40,000                                    | 41,771            | 7.3          | 62.3           | 6.4                                       | 7.1               | 1.4              |
| 40,000-50,000                                    | 67,767            | 11.8         | 74.1           | 12.4                                      | 13.6              | 3.1              |
| 50,000-60,000                                    | 46,626            | 8.1          | 82.2           | 10.4                                      | 11.4              | 3.3              |
| 60,000-80,000                                    | 49,926            | 8.7          | 90.8           | 14.0                                      | 15.0              | 6.2              |
| 80,000-100,000                                   | 22,533            | 3.9          | 94.8           | 8.2                                       | 8.6               | 5.0              |
| 100,000-                                         | 30,469            | 5.3          | 100.0          | 26.7                                      | 20.2              | 75.7             |
| <b>Total</b>                                     | <b>575,650</b>    | <b>100.0</b> |                | <b>100.0</b>                              | <b>100.0</b>      | <b>100.0</b>     |
| <b>Income, 1,000 euro</b>                        |                   |              |                | <b>24,491,833</b>                         | <b>21,623,772</b> | <b>2,868,061</b> |
| <b>Share of income subject to state taxation</b> |                   |              |                | <b>100</b>                                | <b>88</b>         | <b>12</b>        |

Source: Finnish Tax Administration.

# 13.2

## Income recipients by age and gender 2014–2022

|               | Age, years |              |              |         |        |        |        |        | Total   |
|---------------|------------|--------------|--------------|---------|--------|--------|--------|--------|---------|
|               | -18        | 18-24        | 25-34        | 35-44   | 45-54  | 55-64  | 65-74  | 75+    |         |
| <b>Total</b>  |            |              |              |         |        |        |        |        |         |
| 2014          | 14,944     | 53,907       | 114,081      | 84,912  | 80,550 | 71,022 | 59,970 | 45,839 | 525,225 |
| 2015          | 14,720     | 52,984       | 117,571      | 88,840  | 81,194 | 71,931 | 62,000 | 46,434 | 535,674 |
| 2016          | 15,120     | 52,121       | 119,721      | 91,919  | 80,775 | 72,516 | 62,416 | 48,145 | 542,733 |
| 2017          | 15,606     | 51,044       | 121,971      | 95,581  | 80,052 | 73,282 | 64,402 | 48,448 | 550,386 |
| 2018          | 16,083     | 50,440       | 122,711      | 98,485  | 77,968 | 74,049 | 64,936 | 49,911 | 554,583 |
| 2019          | 17,117     | 49,444       | 124,178      | 101,557 | 77,700 | 75,201 | 65,618 | 51,436 | 562,251 |
| 2020          | 15,543     | 47,358       | 123,509      | 103,287 | 77,517 | 75,983 | 65,188 | 54,189 | 562,574 |
| 2021          | 17,248     | 47,338       | 122,965      | 103,808 | 77,806 | 76,524 | 64,204 | 57,018 | 566,911 |
| 2022          | 17,899     | 48,466       | 121,512      | 104,214 | 78,285 | 76,896 | 62,908 | 59,656 | 569,836 |
| %             | 3.1        | 8.5          | 21.3         | 18.3    | 13.7   | 13.5   | 11.0   | 10.5   | 100.0   |
| <b>Gender</b> |            |              |              |         |        |        |        |        |         |
|               | <b>Men</b> | <b>Women</b> | <b>Total</b> |         |        |        |        |        |         |
| 2014          | 244,628    | 280,597      | 525,225      |         |        |        |        |        |         |
| 2015          | 250,145    | 285,529      | 535,674      |         |        |        |        |        |         |
| 2016          | 254,225    | 288,508      | 542,733      |         |        |        |        |        |         |
| 2017          | 258,848    | 291,538      | 550,386      |         |        |        |        |        |         |
| 2018          | 261,405    | 293,178      | 554,583      |         |        |        |        |        |         |
| 2019          | 265,827    | 296,424      | 562,251      |         |        |        |        |        |         |
| 2020          | 265,394    | 297,180      | 562,574      |         |        |        |        |        |         |
| 2021          | 267,397    | 299,514      | 566,911      |         |        |        |        |        |         |
| 2022          | 269,287    | 300,549      | 569,836      |         |        |        |        |        |         |
| %             | 47.3       | 52.7         | 100.0        |         |        |        |        |        |         |

Source: Finnish Tax Administration.

# 13.3

## Income subject to state taxation on average by gender and age of income recipient 2014–2022

| 2022<br>currency<br>rate,<br>euro/<br>year | Age, years |        |        |        |        |        |        |        | Total  |
|--------------------------------------------|------------|--------|--------|--------|--------|--------|--------|--------|--------|
|                                            | -18        | 18–24  | 25–34  | 35–44  | 45–54  | 55–64  | 65–74  | 75+    |        |
| <b>Total</b>                               |            |        |        |        |        |        |        |        |        |
| 2014                                       | 1,747      | 13,637 | 32,179 | 47,631 | 52,126 | 51,162 | 41,552 | 31,909 | 38,644 |
| 2015                                       | 1,710      | 13,488 | 32,818 | 48,485 | 53,096 | 51,823 | 42,984 | 32,752 | 39,446 |
| 2016                                       | 1,693      | 13,616 | 32,837 | 48,364 | 53,010 | 51,537 | 41,937 | 33,161 | 39,330 |
| 2017                                       | 1,688      | 13,894 | 33,882 | 49,644 | 53,946 | 52,680 | 42,458 | 34,581 | 40,339 |
| 2018                                       | 1,912      | 13,898 | 34,907 | 51,535 | 56,009 | 54,038 | 42,899 | 35,142 | 41,470 |
| 2019                                       | 1,739      | 14,103 | 35,279 | 50,644 | 56,735 | 54,611 | 43,318 | 36,556 | 41,777 |
| 2020                                       | 1,893      | 13,424 | 36,026 | 52,335 | 57,848 | 55,265 | 42,307 | 36,703 | 42,573 |
| 2021                                       | 1,832      | 13,749 | 37,707 | 54,726 | 62,902 | 57,716 | 44,099 | 38,037 | 44,647 |
| 2022                                       | 1,946      | 13,430 | 36,912 | 52,890 | 60,167 | 55,060 | 41,916 | 36,451 | 42,886 |

| Gender | Income    |           |           | Share of women's income of men's income % |
|--------|-----------|-----------|-----------|-------------------------------------------|
|        | Men       | Women     | Total     |                                           |
| 2014   | 44,578.42 | 33,470.83 | 38,644.27 | 75.1                                      |
| 2015   | 45,957.73 | 33,741.59 | 39,446.53 | 73.4                                      |
| 2016   | 45,653.88 | 33,756.49 | 39,329.90 | 73.9                                      |
| 2017   | 47,227.00 | 34,223.13 | 40,338.45 | 72.5                                      |
| 2018   | 48,715.87 | 35,009.82 | 41,469.70 | 71.9                                      |
| 2019   | 48,257.53 | 35,965.33 | 41,776.57 | 74.5                                      |
| 2020   | 49,778.90 | 36,137.35 | 42,573.33 | 72.6                                      |
| 2021   | 52,946.51 | 37,238.19 | 44,647.39 | 70.3                                      |
| 2022   | 50,571.10 | 36,000.40 | 42,886.07 | 71.2                                      |

Source: Finnish Tax Administration.

# 13.4

## State taxable income of various kinds of households 2022

|                                                                                 | Household-dwelling units | Income subject to state taxation          |                                          |
|---------------------------------------------------------------------------------|--------------------------|-------------------------------------------|------------------------------------------|
|                                                                                 | Number                   | Average per household-dwelling unit, euro | Median per household-dwelling unit, euro |
| <b>Total</b>                                                                    | <b>350,809</b>           | <b>644,668</b>                            | <b>67,135</b>                            |
| 1-member household                                                              | 178,675                  | 178,675                                   | 37,311                                   |
| Married/unmarried couple without children, or at least 2 persons (not a family) | 77,889                   | 155,778                                   | 97,204                                   |
| Married/Unmarried couple with children                                          | 51,352                   | 192,368                                   | 129,015                                  |
| Single-parent family                                                            | 23,352                   | 58,825                                    | 48,978                                   |
| Others                                                                          | 19,541                   | 59,022                                    | 79,062                                   |

Source: Statistics Finland.

# Justice and public safety

## List of diagrams and tables

- 14.1 Offences known to the police in Helsinki Police District 1995–2023 ..... 70
- 14.2 Fines and convictions at courts of first instance 2023..... 70
- 14.3 Helsinki City Rescue Department’s operation 2016–2023 ..... 71

## 14.1

Offences known to the police in Helsinki Police District  
1995–2023

|                                                                     | 1995           | 2000           | 2005           | 2010           | 2015           | 2020           | 2022          | 2023          |
|---------------------------------------------------------------------|----------------|----------------|----------------|----------------|----------------|----------------|---------------|---------------|
| <b>Total</b>                                                        | <b>103,170</b> | <b>106,162</b> | <b>100,108</b> | <b>116,990</b> | <b>104,473</b> | <b>106,036</b> | <b>73,489</b> | <b>78,682</b> |
| <b>All offences, Helsinki</b>                                       | <b>77,791</b>  | <b>85,284</b>  | <b>74,583</b>  | <b>83,520</b>  | <b>74,504</b>  | <b>84,998</b>  | <b>64,676</b> | <b>75,820</b> |
| % of all offences in Finland                                        | 18.4           | 18.8           | 17.3           | 19.4           | 18.0           | 16.8           | 15.0          | 14.8          |
| Crime against property                                              | 58,912         | 64,700         | 49,874         | 56,245         | 47,023         | 48,382         | 38,566        | 40,924        |
| Crime against life and health                                       | 4,887          | 5,047          | 5,450          | 6,783          | 6,294          | 6,025          | 6,670         | 7,108         |
| Sexual offences                                                     | 191            | 178            | 359            | 315            | 428            | 647            | 725           | 808           |
| Offences against justice, authorities and public order              | 1,044          | 2,053          | 2,604          | 2,903          | 2,944          | 3,269          | 3,276         | 3,053         |
| Certain traffic offences                                            | 3,189          | 4,745          | 6,896          | 5,695          | 4,479          | 6,508          | 4,572         | 4,755         |
| Other crimes                                                        | 9,568          | 8,561          | 9,400          | 11,579         | 13,336         | 20,167         | 10,867        | 12,575        |
| Endangering traffic safety hit-and-run, traffic (motoring) offences | 25,379         | 20,878         | 25,525         | 33,470         | 29,969         | 18,796         | 6,573         | 6,597         |
| Share of similar offences in the whole country %                    | 7.6            | 6.7            | 7.2            | 6.6            | 7.4            | 9.2            | 8.8           | 8.7           |

Source: Helsinki Policy Authority and Statistics Finland. Justice. Yearbook of Justice Statistics.

## 14.2

## Fines and convictions at courts of first instance 2023

|                                                            | Helsinki      |                       | Finland        |                       |
|------------------------------------------------------------|---------------|-----------------------|----------------|-----------------------|
|                                                            | Total         | Residents of Helsinki | Total          | Residents of Helsinki |
| <b>Total</b>                                               | <b>21,804</b> | <b>12,047</b>         | <b>164,372</b> | <b>17,844</b>         |
| Summary penal fee <sup>1</sup>                             | 401           | 237                   | 2,666          | 270                   |
| Fine orders <sup>2</sup>                                   | 8,477         | 4,762                 | 75,870         | 7,323                 |
| Fines                                                      | 5,233         | 2,722                 | 34,001         | 4,004                 |
| Verdicts of guilty <sup>3</sup>                            | 7,693         | 4,326                 | 51,835         | 6,247                 |
| imprisonment                                               | 1,066         | 535                   | 5,468          | 795                   |
| community.service                                          | 149           | 96                    | 1,415          | 128                   |
| supervisory sentence (electronic tag curfew)               | 5             | 3                     | 149            | 7                     |
| probation                                                  | 1,838         | 1,053                 | 12,898         | 1,473                 |
| earlier conviction sufficient (Finnish Penal Code 7:6–7§§) | 153           | 77                    | 1,143          | 148                   |
| fines                                                      | 3,999         | 2,251                 | 28,717         | 3,298                 |
| mistrials                                                  | 61            | 43                    | 302            | 53                    |
| other punishments                                          | 422           | 268                   | 1,743          | 345                   |

<sup>1</sup> Including also summary penal fees by courts of law.

<sup>2</sup> 1–31 Dec. 2023. A new Fines Act came into effect on 1 Dec. 2023.

<sup>3</sup> Not including summary penal fees by courts of law.

Source: Statistics Finland.

## 14.3

## Helsinki City Rescue Department's operation 2015–2023

|                               | 2015       | 2020       | 2021       | 2022       | 2023       |
|-------------------------------|------------|------------|------------|------------|------------|
| <b>Total staff</b>            | <b>674</b> | <b>720</b> | <b>760</b> | <b>797</b> | <b>752</b> |
| Rescue operations             | 4,930      | 8,807      | 9,438      | 8,704      | 9,597      |
| Emergency medical care alarms | 54,596     | 56,608     | 63,888     | 64,000     | 60,914     |
| Accident prevention           | 4,335      | 6,293      | 5,927      | 6,454      | 7105       |
| Fire inspections              | 3,204      | 2,209      | 2,824      | 2,121      | 2,589      |
| Places in bomb shelter        | 867,878    | 926,743    | 911,719    | 938,801    | 948,859    |

Source: Helsinki City Rescue Department and RegionCD.



# Elections

## List of diagrams and tables

|      |                                                     |    |
|------|-----------------------------------------------------|----|
| 15.1 | Municipal elections in Helsinki 2004–2021.....      | 80 |
| 15.2 | Parliamentary elections in Helsinki 2011–2023 ..... | 80 |
| 15.3 | Presidential elections in Helsinki 2006–2018.....   | 81 |
| 15.4 | EU Parliament elections 2014 and 2019 .....         | 81 |

# 15.1

## Municipal elections in Helsinki 2004–2021

|                                                                 | 2004    | 2008    | 2012    | 2012    | 2021    | 2021    |
|-----------------------------------------------------------------|---------|---------|---------|---------|---------|---------|
| Persons entitled to vote                                        | 452,271 | 459,428 | 474,209 | 499,692 | 527,982 | 542,830 |
| % of persons entitled to vote in Finland                        | 11.3    | 11.2    | 11.3    | 11.6    | 12      | 12.2    |
| Persons who voted in Helsinki                                   | 230,336 | 262,362 | 279,181 | 286,787 | 326,351 | 334,867 |
| Voting turnout %                                                | 50.9    | 57.1    | 58.9    | 57.4    | 61.8    | 61.7    |
| Voting turnout % in municipal elections in Finland <sup>1</sup> | 55.9    | 58.6    | 61.2    | 58.3    | 58.9    | 55.1    |
| Ballots rejected in Helsinki                                    | 1,289   | 1,457   | 1,387   | 1,420   | 1,126   | 972     |
| Percentage                                                      | 0.6     | 0.6     | 0.5     | 0.5     | 0.3     | 0.3     |
| Percentage in the whole country <sup>2</sup>                    | 0.8     | 0.6     | 0.6     | 0.5     | 0.6     | 0.5     |

<sup>1</sup> Of those entitled to vote.

<sup>2</sup> Of ballots submitted.

Source: Statistics Finland.

# 15.2

## Parliamentary elections in Helsinki 2011–2023

|                                                                     | 2011 <sup>1</sup> | 2011 <sup>2</sup> | 2015 <sup>1</sup> | 2015 <sup>2</sup> | 2019 <sup>1</sup> | 2019 <sup>2</sup> | 2023 <sup>1</sup> | 2023 <sup>2</sup> |
|---------------------------------------------------------------------|-------------------|-------------------|-------------------|-------------------|-------------------|-------------------|-------------------|-------------------|
| Persons entitled to vote                                            | 454,861           | 44,720            | 472,893           | 48,982            | 488,502           | 52,381            | 491,137           | 55,238            |
| % of persons entitled to vote in Finland                            | 10.4              | 19.6              | 11.2              | 20.2              | 11.5              | 20.6              | 11.5              | 21.0              |
| Men                                                                 | 207,028           | 16,514            | 216,144           | 18,303            | 223,656           | 19,716            | 224,960           | 21,001            |
| Women                                                               | 247,833           | 28,206            | 256,749           | 30,679            | 264,846           | 32,665            | 266,177           | 34,237            |
| Persons who voted in Helsinki                                       | 343,523           | 6,446             | 355,359           | 6,888             | 379,511           | 9,253             | 381,953           | 9,527             |
| Voting turnout % <sup>3</sup>                                       | 75.5              | 14.4              | 75.1              | 14.1              | 77.7              | 17.7              | 77.8              | 17.2              |
| Voting turnout % in parliamentary elections in Finland <sup>3</sup> | 70.5              | 10.6              | 70.1              | 10.1              | 72.1              | 12.6              | 72.0              | 12.2              |
| Ballots rejected in Helsinki                                        | 2,084             | ..                | 2,372             | ..                | 3,204             | ..                | 2,979             | ..                |
| Percentage <sup>4</sup>                                             | 0.6               | ..                | 0.7               | ..                | 0.7               | ..                | 0.8               | ..                |
| Percentage in the whole country <sup>4</sup>                        | 0.6               | ..                | 0.5               | ..                | 0.6               | ..                | 0.5               | ..                |

<sup>1</sup> Finnish citizens resident in Finland. For more details, see [www.vaalit.fi](http://www.vaalit.fi).

<sup>2</sup> Finnish citizens resident abroad. For more details, see [www.vaalit.fi](http://www.vaalit.fi).

<sup>3</sup> Of those entitled to vote.

<sup>4</sup> Of ballots submitted.

Source: Statistics Finland.

# 15.3

## Presidential elections in Helsinki 2006–2018

|                               | 2006               |                     | 2012               |                     | 2018               |
|-------------------------------|--------------------|---------------------|--------------------|---------------------|--------------------|
|                               | <i>First round</i> | <i>Second round</i> | <i>First round</i> | <i>Second round</i> | <i>First round</i> |
| Persons entitled to vote      | 478,589            | 478,589             | 502,960            | 502,960             | 535,967            |
| In Helsinki <sup>1</sup>      | 439,144            | 439,144             | 457,588            | 457,588             | 484,684            |
| Abroad <sup>2</sup>           | 39,445             | 39,445              | 45,372             | 45,372              | 51,283             |
| Persons who voted             | 349,649            | 356,786             | 358,412            | 350,718             | 358,681            |
| In Helsinki <sup>1</sup>      | 335,229            | 350,856             | 350,317            | 342,487             | 349,687            |
| Voting turnout % <sup>3</sup> | 76.3               | 79.9                | 76.6               | 74.8                | 72.1               |
| Abroad <sup>2</sup>           | 5,420              | 5,930               | 8,095              | 8,231               | 8,994              |
| Voting turnout % <sup>3</sup> | 13.7               | 15.0                | 17.8               | 18.1                | 17.5               |

<sup>1</sup> Persons in Helsinki's population register. For more details, see [www.vaalit.fi](http://www.vaalit.fi)

<sup>2</sup> Persons not resident but entitled to vote in Helsinki. For more details, see [www.vaalit.fi](http://www.vaalit.fi)

<sup>3</sup> Of those entitled to vote.

Source: Statistics Finland.

# 15.4

## EU Parliament elections 2014 and 2019

|                               | 2014            |                | 2019            |                |
|-------------------------------|-----------------|----------------|-----------------|----------------|
|                               | <i>Helsinki</i> | <i>Finland</i> | <i>Helsinki</i> | <i>Finland</i> |
| Persons entitled to vote      | 516,194         | 4,440,297      | 540,402         | 4,504,481      |
| Persons who voted             | 250,194         | 1,736,618      | 278,536         | 1,836,059      |
| Voting turnout % <sup>1</sup> | 48.5            | 39.1           | 51.5            | 40.8           |
| Ballot papers rejected        | 1,255           | 10,435         | 836             | 6,014          |
| Voting turnout % <sup>2</sup> | 0.5             | 0.6            | 0.3             | 0.3            |

<sup>1</sup> Of those entitled to vote.

<sup>2</sup> Of ballots submitted.

Source: Statistics Finland.